

PHOSPHO-MDM2 (SER166) RABBIT MAB

Cat.#: N261731

Product Name: Anti-Phospho-MDM2 (Ser166) Rabbit Monoclonal Antibody

Synonyms: Double minute 2 protein; Hdm2; Oncoprotein Mdm2

UNIPROT ID: Q00987

Background: E3 ubiquitin-protein ligase that mediates ubiquitination of p53/TP53, leading to its degradation by the proteasome.

Immunogen: A synthetic phosphopeptide corresponding to residues surrounding Ser166 of human MDM2

Applications: WB,IHC-P

Recommended Dilutions: WB: 1/500-1/1000 IHC: 1/50-1/100

Host Species: Rabbit

Clonality: Rabbit Monoclonal

Clone ID: R08-8C7

MW: Calculated MW: 55 kDa; Observed MW: 90 kDa

Isotype: IgG

Purification: Affinity Purified

Species Reactivity: Human,Rat

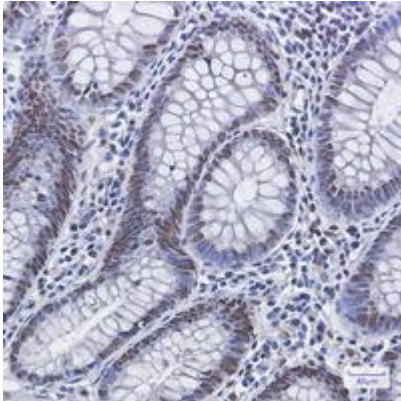
Conjugation: Unconjugated

Modification: Phosphorylated

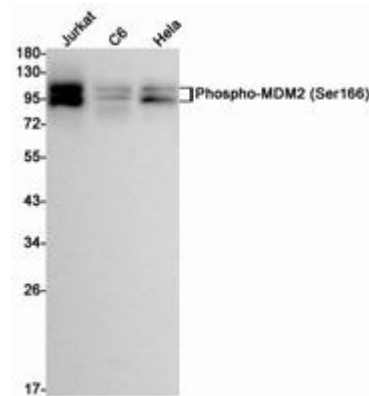
Constituents: PBS (without Mg²⁺ and Ca²⁺), pH 7.3 containing 50% glycerol, 0.5% BSA and 0.02% sodium azide

Research Areas: Neuroscience

Storage & Shipping: Store at -20°C. Avoid repeated freezing and thawing



Immunohistochemistry analysis of paraffin-embedded Human colon cancer using Phospho-MDM2 (Ser166) antibody. High-pressure and temperature Sodium Citrate pH 6.0 was used for antigen retrieval.



Western blot analysis of Phospho-MDM2 (Ser166) in Jurkat, C6, HeLa lysates using Phospho-MDM2 (Ser166) antibody.