

## PHOSPHO-IGF1 RECEPTOR (TYR1166) RABBIT MAB

**Cat.#:** N262412

**Product Name:** Anti-Phospho-IGF1 Receptor (Tyr1166) Rabbit Monoclonal Antibody

**Synonyms:** IGF1R; Insulin-like growth factor 1 receptor; Insulin-like growth factor I receptor; IGF-I receptor; CD antigen CD221

**UNIPROT ID:** P08069

**Background:** This receptor binds insulin-like growth factor with a high affinity. It has tyrosine kinase activity. The insulin-like growth factor I receptor plays a critical role in transformation events. Cleavage of the precursor generates alpha and beta subunits. It is highly overexpressed in most malignant tissues where it functions as an anti-apoptotic agent by enhancing cell survival. Alternatively spliced transcript variants encoding distinct isoforms have been found for this gene. [provided by RefSeq, May 2014]

**Immunogen:** A synthetic phosphopeptide corresponding to residues surrounding Tyr1166 of human INSR/IGF-1R

**Applications:** WB,IP

**Recommended Dilutions:** WB: 1/500-1/1000 IP: 1/20

**Host Species:** Rabbit

**Clonality:** Rabbit Monoclonal

**Clone ID:** R06-6B1

**MW:** Calculated MW: 155 kDa; Observed MW: 95 kDa

**Isotype:** IgG

**Purification:** Affinity Purified

**Species Reactivity:** Human,Mouse,Rat

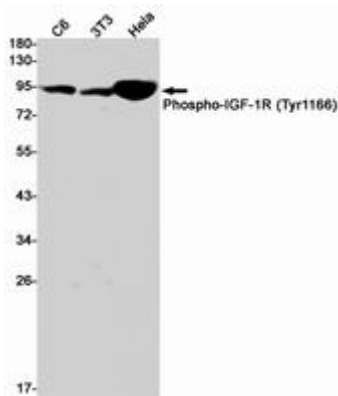
**Conjugation:** Unconjugated

**Modification:** Phosphorylated

**Constituents:** PBS (without Mg<sup>2+</sup> and Ca<sup>2+</sup>), pH 7.3 containing 50% glycerol, 0.5% BSA and 0.02% sodium azide

**Research Areas:** Signal Transduction

**Storage & Shipping:** Store at -20°C. Avoid repeated freezing and thawing



Western blot analysis of Phospho-IGF1R (Tyr1166) in C6, 3T3, HeLa lysates using Phospho-IGF1 Receptor (Tyr1166) antibody.