

PHOSPHO-HISTONE H3 (SER10/THR11) RABBIT MAB

Cat.#: N263168

Product Name: Anti-Phospho-Histone H3 (Ser10/Thr11) Rabbit Monoclonal Antibody

Synonyms: H3 histone; family 3A; H3 histone; family 3B (H3.3B); H3.3A; H3.3B; H33; H3F3; H3F3A; H3F3B; Histone H3.3

UNIPROT ID: P68431

Background: H3 Core component of nucleosome. Nucleosomes wrap and compact DNA into chromatin, limiting DNA accessibility to the cellular machineries which require DNA as a template. Histones thereby play a central role in transcription regulation, DNA repair, DNA replication and chromosomal stability.

Immunogen: A synthetic phosphopeptide corresponding to residues surrounding Ser10/Thr11 of human Histone H3

Applications: WB,IHC-F,IHC-P,ICC/IF,IP

Recommended Dilutions: WB: 1/500-1/1000 IHC: 1/50-1/100 IF: 1/50-1/200 IP: 1/20

Host Species: Rabbit

Clonality: Rabbit Monoclonal

Clone ID: R08-6C4

MW: Calculated MW: 15 kDa; Observed MW: 15 kDa

Isotype: IgG

Purification: Affinity Purified

Species Reactivity: Human,Mouse,Rat

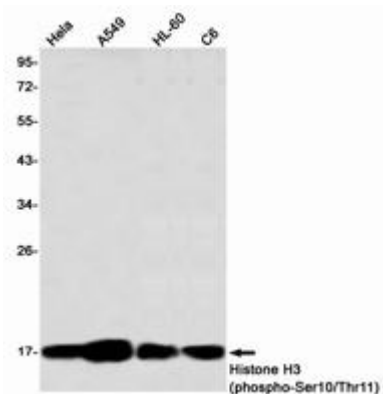
Conjugation: Unconjugated

Modification: Phosphorylated

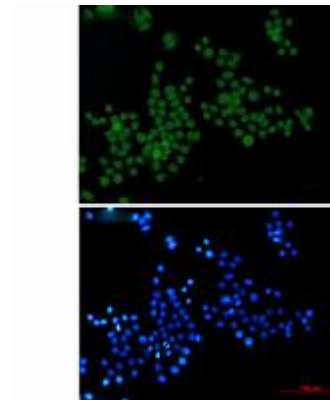
Constituents: PBS (without Mg²⁺ and Ca²⁺), pH 7.3 containing 50% glycerol, 0.5% BSA and 0.02% sodium azide

Research Areas: EpigeneticsyyyHistone phosphorylation

Storage & Shipping: Store at -20°C. Avoid repeated freezing and thawing



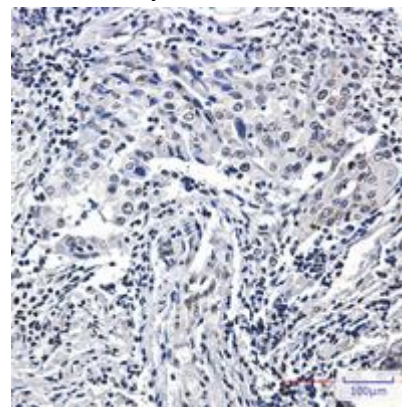
Western blot analysis of Histone H3 (Phospho-Ser10/Thr11) in HeLa, A549, HL-60, C6 lysates using Histone H3 (Phospho-Ser10/Thr11) antibody



Immunocytochemistry analysis of Phospho-Histone H3 (Ser10/Thr11) (green) in HeLa using Phospho-Histone H3 (Ser10/Thr11) antibody, and DAPI (blue).



Western blot analysis of Phospho-Histone H3 (Ser10/Thr11) in 3T3 lysates using Phospho-Histone H3 (Ser10/Thr11) antibody.



Immunohistochemistry analysis of paraffin-embedded Human lung cancer using Histone H3 (Phospho-Ser10/Thr11) antibody. High-pressure and temperature Sodium Citrate pH 6.0 was used for antigen retrieval.