

## PHOSPHO-GSK3 (TYR279/TYR216) RABBIT PAB

**Cat.#:** N225306

**Product Name:** Anti-Phospho-GSK3 (Tyr279/Tyr216) Rabbit pAb

**Synonyms:** Serine/threonine-protein kinase GSK3A

**UNIPROT ID:** P49840

**Background:** GSK3A a proline-directed protein kinase of the GSK family. Implicated in the control of several regulatory proteins including glycogen synthase, Myb, and c-Jun. GSK3 and GSK3 have similar functions. GSK3 phosphorylates tau, the principal component of neurofibrillary tangles in Alzheimer disease and is required for maximal production of amyloid plaque peptides by secretase.

**Immunogen:** Synthetic peptide of human GSK3A

**Applications:** WB,IHC-P,ICC/IF

**Recommended Dilutions:** WB: 1/500-1/1000 IHC: 1/50-1/100 ICC: 1/100-1/200

**Host Species:** Rabbit

**Clonality:** Rabbit Polyclonal

**Clone ID:** -

**MW:** Calculated MW: 51 kDa; Observed MW: 46,51 kDa

**Isotype:** IgG

**Purification:** Affinity Purified

**Species Reactivity:** Human,Mouse,Rat

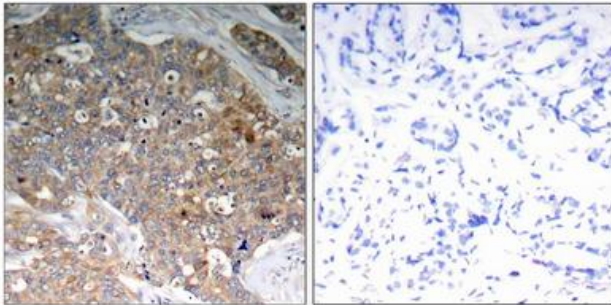
**Conjugation:** Unconjugated

**Modification:** Phosphorylated

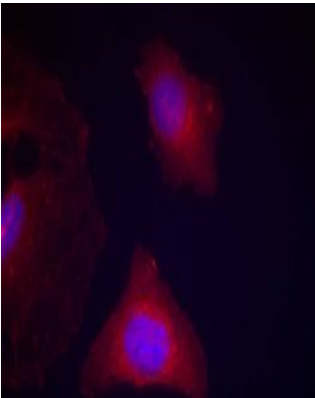
**Constituents:** PBS (without Mg<sup>2+</sup> and Ca<sup>2+</sup>), pH 7.3 containing 50% glycerol, 0.5% BSA and 0.02% sodium azide

**Research Areas:** Neuroscience

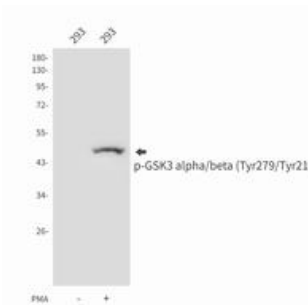
**Storage & Shipping:** Store at -20°C. Avoid repeated freezing and thawing



Immunohistochemistry analysis of paraffin-embedded Human breast carcinoma tissue using Phospho-GSK3 (Tyr279/Tyr216) antibody. High-pressure and temperature Sodium Citrate pH 6.0 was used for antigen retrieval. Sample with blocking peptide on the right.



Immunofluorescence analysis of Phospho-GSK3 (Tyr279/Tyr216) in HeLa cells using GSK3a/b(Phospho-Tyr279/216) antibody (red).



Western blot analysis of Phospho-GSK3 (Tyr279/Tyr216) in 293 lysates using Phospho-GSK3 alpha/beta (Tyr279/Tyr216) antibody.