

PHOSPHO-GLUCOCORTICOID RECEPTOR (SER226) RABBIT MAB

Cat.#: N263167

Product Name: Anti-Phospho-Glucocorticoid Receptor (Ser226) Rabbit Monoclonal Antibody

Synonyms: NR3C1; GRL; Glucocorticoid receptor; GR; Nuclear receptor subfamily 3 group C member 1

UNIPROT ID: P04150

Background: The protein encoded by this gene is a receptor for glucocorticoids and can act as both a transcription factor and a regulator of other transcription factors. The encoded protein can bind DNA as a homodimer or as a heterodimer with another protein such as the retinoid X receptor. This protein can also be found in heteromeric cytoplasmic complexes along with heat shock factors and immunophilins.

Immunogen: A synthetic phosphopeptide corresponding to residues surrounding Ser226 of human Glucocorticoid Receptor

Applications: WB,IHC-P

Recommended Dilutions: WB: 1/500-1/1000 IHC: 1/50-1/100

Host Species: Rabbit

Clonality: Rabbit Monoclonal

Clone ID: R02-1H0

MW: Calculated MW: 86 kDa; Observed MW: 94 kDa

Isotype: IgG

Purification: Affinity Purified

Species Reactivity: Human,Rat

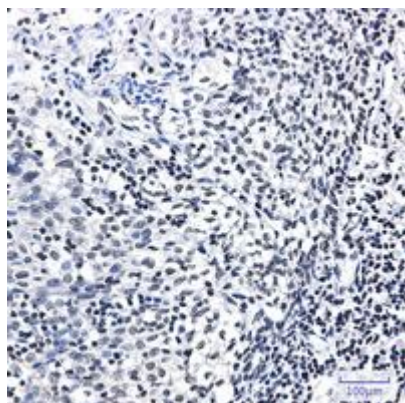
Conjugation: Unconjugated

Modification: Phosphorylated

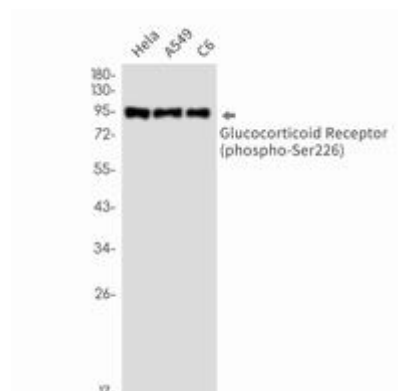
Constituents: PBS (without Mg²⁺ and Ca²⁺), pH 7.3 containing 50% glycerol, 0.5% BSA and 0.02% sodium azide

Research Areas: Signal Transduction

Storage & Shipping: Store at -20°C. Avoid repeated freezing and thawing



Immunohistochemistry analysis of paraffin-embedded Human tonsil using Glucocorticoid Receptor (Phospho-Ser226) antibody. High-pressure and temperature Sodium Citrate pH 6.0 was used for antigen retrieval.



Western blot analysis of Phospho-Glucocorticoid Receptor (Ser226) in HeLa, A549, C6 lysates using Phospho-Glucocorticoid Receptor (Ser226) antibody.