

## PHOSPHO-FGFR1 (TYR654) RABBIT PAB

**Cat.#:** N225421

**Product Name:** Anti-Phospho-FGFR1 (Tyr654) Rabbit pAb

**Synonyms:** FGFR1; BFGFR; CEK; FGFR; FLG; FLT2; HBGFR; Fibroblast growth factor receptor 1; FGFR-1; Basic fibroblast growth factor receptor 1; BFGFR; bFGF-R-1; Fms-like tyrosine kinase 2; FLT-2; N-sam; Proto-oncogene c-Fgr; CD antigen CD331

**UNIPROT ID:** P11362

**Background:** Fibroblast growth factors (FGFs) produce mitogenic and angiogenic effects in target cells by signaling through cell surface receptor tyrosine kinases. Each receptor contains an extracellular ligand binding domain, a transmembrane domain, and a cytoplasmic kinase domain. Following ligand binding and dimerization, the receptors are phosphorylated at specific tyrosine residues. Seven tyrosine residues in the cytoplasmic tail of FGFR1 can be phosphorylated: Tyr463, 583, 585, 653, 654, 730, and 766.

**Immunogen:** The antiserum was produced against synthesized peptide derived from human FGFR1 around the phosphorylation site of Tyr654. AA range:626-675

**Applications:** WB,ICC/IF,ELISA

**Recommended Dilutions:** WB: 1/500-1/1000 IF: 1/50-1/200 ELISA: 1/10000

**Host Species:** Rabbit

**Clonality:** Rabbit Polyclonal

**Clone ID:** -

**MW:** Calculated MW: 92 kDa; Observed MW: 120 kDa

**Isotype:** IgG

**Purification:** Affinity Chromatography

**Species Reactivity:** Human,Mouse,Rat

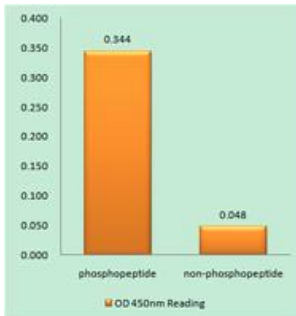
**Conjugation:** Unconjugated

**Modification:** Phosphorylated

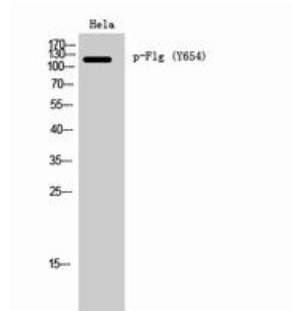
**Constituents:** PBS (without Mg<sup>2+</sup> and Ca<sup>2+</sup>), pH 7.3 containing 50% glycerol, 0.5% BSA and 0.02% sodium azide

**Research Areas:** Cardiovascular

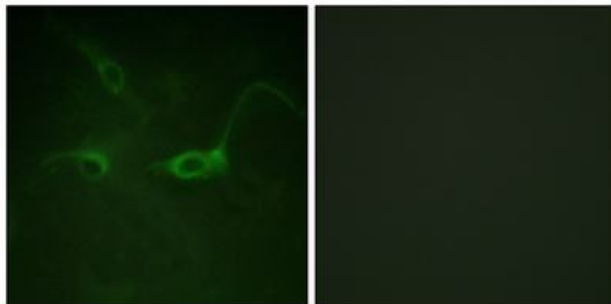
**Storage & Shipping:** Store at -20°C. Avoid repeated freezing and thawing



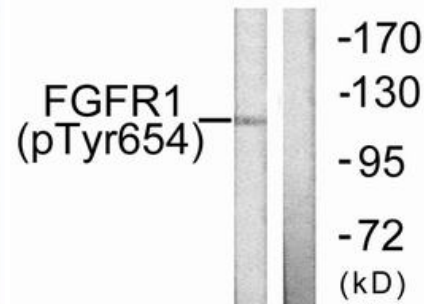
EnzymeLinked Immunosorbent Assay (Phospho-ELISA) for Immunogen Phosphopeptide (Phospho-left) and NonPhosphopeptide (Phospho-right), using FGFR1 (Phospho-Tyr654) antibody.



Western blot analysis of Phospho-FGFR1 (Tyr654) in HeLa lysates using Phospho-FGFR1 (Tyr654) antibody.



Immunofluorescence analysis of Phospho-FGFR1 (Tyr654) in COS7 cells using FGFR1 (Phospho-Tyr654) antibody. The picture on the right is blocked with the Phosphopeptide.



Western blot analysis of Phospho-FGFR1 (Tyr654) in 293 lysates treated with Insulin using Phospho-FGFR1 (Tyr654) antibody. The lane on the right is blocked with the Phosphopeptide.