

## PHOSPHO-ESTROGEN RECEPTOR ALPHA (SER118) RABBIT PAB

**Cat.#:** N225290

**Product Name:** Anti-Phospho-Estrogen Receptor alpha (Ser118) Rabbit pAb

**Synonyms:** ESRI; Era; Eralpha; Estrogen receptor; Estradiol receptor; ER-alpha; Estrogen receptor 1; NR3A1; ER; ESR; ESRA; Estrogen receptor alpha

**UNIPROT ID:** P03372

**Background:** ER (estrogen receptor 1) a member of the steroid receptor superfamily, contains highly conserved DNA binding (DBD) and ligand binding domains (LBD). Through its estrogen-independent and estrogen-dependent activation domains (AF-1 and AF-2, respectively), ER regulates transcription by recruiting coactivator proteins and interacting with general transcriptional machinery. Phosphorylation provides an important mechanism to regulate ER activity. ER is phosphorylated on multiple sites.

**Immunogen:** Synthetic peptide of human ESRI

**Applications:** WB,IHC-P,ICC/IF

**Recommended Dilutions:** WB: 1/500-1/1000 IHC: 1/50-1/100 ICC: 1/100-1/200

**Host Species:** Rabbit

**Clonality:** Rabbit Polyclonal

**Clone ID:** -

**MW:** Calculated MW: 66 kDa; Observed MW: 66 kDa

**Isotype:** IgG

**Purification:** Affinity Purified

**Species Reactivity:** Human

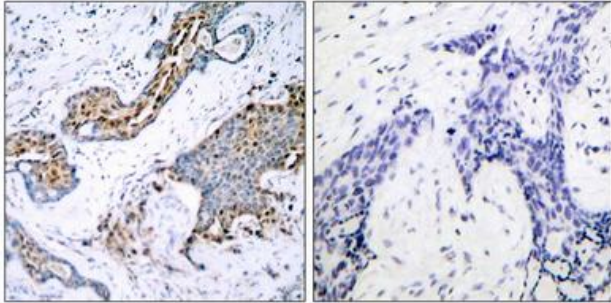
**Conjugation:** Unconjugated

**Modification:** Phosphorylated

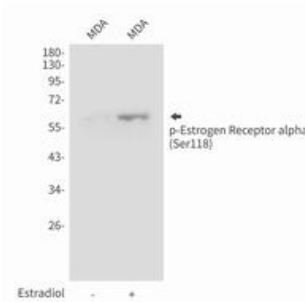
**Constituents:** PBS (without Mg<sup>2+</sup> and Ca<sup>2+</sup>), pH 7.3 containing 50% glycerol, 0.5% BSA and 0.02% sodium azide

**Research Areas:** Signal Transduction

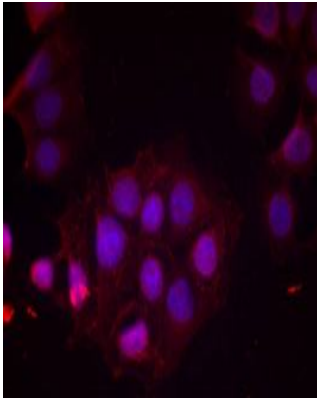
**Storage & Shipping:** Store at -20°C. Avoid repeated freezing and thawing



Immunohistochemistry analysis of paraffin-embedded Human breast carcinoma tissue using Estrogen Receptor alpha (Phospho-Ser118) antibody. High-pressure and temperature Sodium Citrate pH 6.0 was used for antigen retrieval. Sample with blocking peptide on the right.



Western blot analysis of Phospho-Estrogen Receptor alpha (Ser118) in MDAMB435 lysates using Phospho-Estrogen Receptor alpha (Ser118) antibody.



Immunofluorescence analysis of Phospho-Estrogen Receptor alpha (Ser118) in MCF-7 cells using Estrogen Receptor alpha (Phospho-Ser118) antibody (red).