

## PHOSPHO-ERBB 4 (TYR1162) RABBIT MAB

**Cat.#:** N263162

**Product Name:** Anti-Phospho-ErbB 4 (Tyr1162) Rabbit Monoclonal Antibody

**Synonyms:** ERBB4; HER4; Receptor tyrosine-protein kinase erbB-4; Proto-oncogene-like protein c-ErbB-4; Tyrosine kinase-type cell surface receptor HER4; p180erbB4

**UNIPROT ID:** Q15303

**Background:** The HER4/ERBB4 gene is a member of the type I receptor tyrosine kinase subfamily that includes EGFR (MIM 131550), ERBB2 (MIM 164870), and ERBB3 (MIM 190151). It encodes a receptor for NDF/hereregulin (MIM 142445).

**Immunogen:** A synthetic phosphopeptide corresponding to residues surrounding Tyr1162 of human ErbB 4

**Applications:** WB,IHC-P,IP

**Recommended Dilutions:** WB: 1/500-1/1000 IHC: 1/50-1/100 IP: 1/20

**Host Species:** Rabbit

**Clonality:** Rabbit Monoclonal

**Clone ID:** R07-4C0

**MW:** Calculated MW: 147 kDa; Observed MW: 180 kDa

**Isotype:** IgG

**Purification:** Affinity Purified

**Species Reactivity:** Human

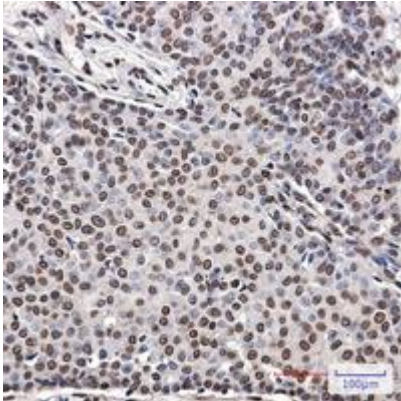
**Conjugation:** Unconjugated

**Modification:** Phosphorylated

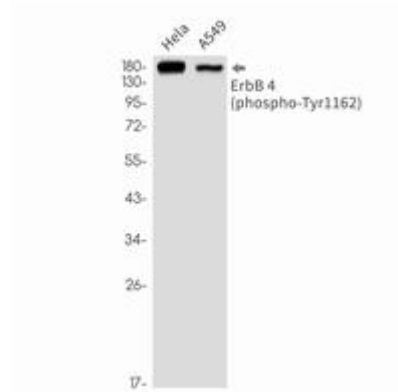
**Constituents:** PBS (without Mg<sup>2+</sup> and Ca<sup>2+</sup>), pH 7.3 containing 50% glycerol, 0.5% BSA and 0.02% sodium azide

**Research Areas:** Cancer

**Storage & Shipping:** Store at -20°C. Avoid repeated freezing and thawing



Immunohistochemistry analysis of paraffin-embedded Human breast cancer using ErbB 4 (Phospho-Tyr1162) antibody. High-pressure and temperature Sodium Citrate pH 6.0 was used for antigen retrieval.



Western blot analysis of Phospho-ErbB 4 (Tyr1162) in HeLa, A549 lysates using Phospho-ErbB 4 (Tyr1162) antibody.