

PHOSPHO-EIF4E (SER209) RABBIT MAB

Cat.#: N262169

Product Name: Anti-Phospho-eIF4E (Ser209) Rabbit Monoclonal Antibody

Synonyms: EIF4E; EIF4EL1; EIF4F; Eukaryotic translation initiation factor 4E; eIF-4E; eIF4E; eIF-4F 25 kDa subunit; mRNA cap-binding protein

UNIPROT ID: P06730

Background: eIF4E, a protein modulates translation of maternal mRNAs in early embryos before the onset of zygotic transcription. eIF4E also influences the overall rate of translation. eIF4E binds to the 7 methyl GTP cap structure of eukaryotic mRNAs. Phosphorylation of eIF4E on serine 209 regulates the affinity of this protein for the 7 methyl GTP cap and/or RNA. Phosphorylation also enhances the interaction of eIF4E with eIF4G, which form a complex known as eIF4F. eIF4E phosphorylation is correlated with increased translational rate in a number of cell types.

Immunogen: A synthetic phosphopeptide corresponding to residues surrounding Ser209 of human eIF4E

Applications: WB,IHC-F,IHC-P,ICC/IF,IP

Recommended Dilutions: WB: 1/500-1/1000 IHC: 1/50-1/100 IF: 1/50-1/200 IP: 1/20

Host Species: Rabbit

Clonality: Rabbit Monoclonal

Clone ID: R04-5A4

MW: Calculated MW: 25 kDa; Observed MW: 25 kDa

Isotype: IgG

Purification: Affinity Purified

Species Reactivity: Human,Mouse,Rat

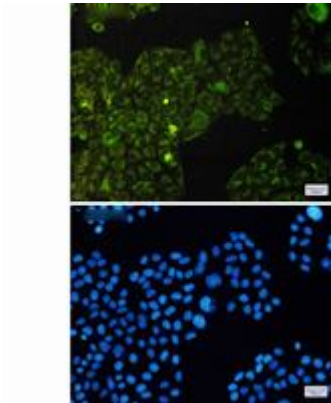
Conjugation: Unconjugated

Modification: Phosphorylated

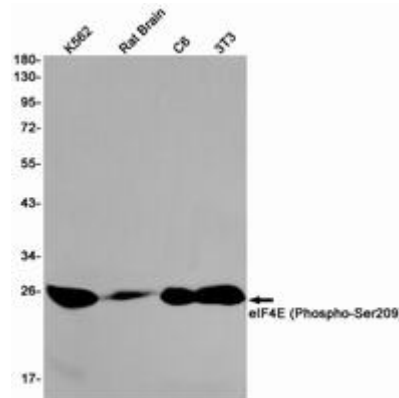
Constituents: PBS (without Mg²⁺ and Ca²⁺), pH 7.3 containing 50% glycerol, 0.5% BSA and 0.02% sodium azide

Research Areas: Hypoxia Signal Transduction Hypoxia-induced

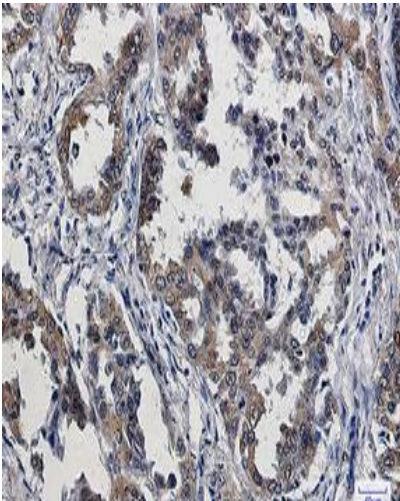
Storage & Shipping: Store at -20°C. Avoid repeated freezing and thawing



Immunocytochemistry analysis of eIF4E (Phospho-Ser209) (green) in HeLa using eIF4E (Phospho-Ser209) antibody, and DAPI (blue)



Western blot analysis of eIF4E (Phospho-Ser209) in K562, rat Brain, C6, 3T3 lysates using Phospho-eIF4E (Ser209) antibody.



Immunohistochemistry analysis of paraffin-embedded Human lung cancer using Phospho-eIF4E (Ser209) antibody. High-pressure and temperature Sodium Citrate pH 6.0 was used for antigen retrieval.