

PHOSPHO-DELTA 1 CATENIN (TYR228) RABBIT MAB

Cat.#: N261724

Product Name: Anti-Phospho-delta 1 Catenin (Tyr228) Rabbit Monoclonal Antibody

Synonyms: CAS; p120; BCDS2; CTNND; P120CAS; P120CTN; p120(CAS); p120(CTN)

UNIPROT ID: O60716

Background: Catenin δ -1 (p120 catenin) has an amino-terminal coiled-coil domain followed by a regulatory domain containing multiple phosphorylation sites and a central Armadillo repeat domain of ten linked 42-amino acid repeats. The carboxy-terminal tail has no known function. Catenin δ -1 fulfills critical roles in the regulation of cell-cell adhesion as it regulates E-cadherin turnover at the cell surface to determine the level of E-cadherin available for cell-cell adhesion.

Immunogen: A synthetic phosphopeptide corresponding to residues surrounding Tyr228 of human delta 1 Catenin

Applications: WB, ICC/IF, IP

Recommended Dilutions: WB: 1/500-1/1000 IF: 1/50-1/200 IP: 1/20

Host Species: Rabbit

Clonality: Rabbit Monoclonal

Clone ID: R08-5A8

MW: Calculated MW: 108 kDa; Observed MW: 95,100 kDa

Isotype: IgG

Purification: Affinity Purified

Species Reactivity: Rat, Hamster

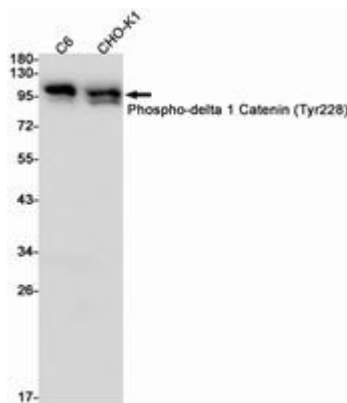
Conjugation: Unconjugated

Modification: Phosphorylated

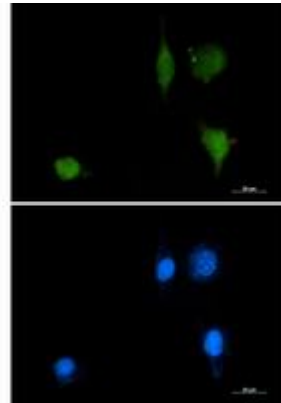
Constituents: PBS (without Mg²⁺ and Ca²⁺), pH 7.3 containing 50% glycerol, 0.5% BSA and 0.02% sodium azide

Research Areas: Cell Biology

Storage & Shipping: Store at -20°C. Avoid repeated freezing and thawing



Western blot analysis of Phospho-delta 1 Catenin (Tyr228) in C6, CHO-K1 lysates using Phospho-delta 1 Catenin (Tyr228) antibody.



Immunocytochemistry analysis of Phospho-delta 1 Catenin (Tyr228) (green) in SKOV-3 using Phospho-delta 1 Catenin (Tyr228) antibody, and DAPI (blue).