

PHOSPHO-DELTA 1 CATENIN (THR916) RABBIT MAB

Cat.#: N263157

Product Name: Anti-Phospho-delta 1 Catenin (Thr916) Rabbit Monoclonal Antibody

Synonyms: CAS; p120; BCDS2; CTNND; P120CAS; P120CTN; p120(CAS); p120(CTN)

UNIPROT ID: O60716

Background: Catenin δ -1 (p120 catenin) has an amino-terminal coiled-coil domain followed by a regulatory domain containing multiple phosphorylation sites and a central Armadillo repeat domain of ten linked 42-amino acid repeats. The carboxy-terminal tail has no known function. Catenin δ -1 fulfills critical roles in the regulation of cell-cell adhesion as it regulates E-cadherin turnover at the cell surface to determine the level of E-cadherin available for cell-cell adhesion.

Immunogen: A synthetic phosphopeptide corresponding to residues surrounding Thr916 of human delta 1 Catenin/CAS

Applications: WB,IHC-F,IHC-P,ICC/IF

Recommended Dilutions: WB: 1/500-1/1000 IHC: 1/50-1/100 IF: 1/50-1/200

Host Species: Rabbit

Clonality: Rabbit Monoclonal

Clone ID: R07-5A6

MW: Calculated MW: 108 kDa; Observed MW: 100 kDa

Isotype: IgG

Purification: Affinity Purified

Species Reactivity: Human,Mouse

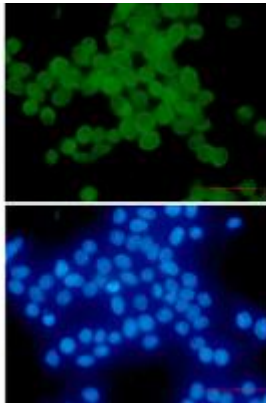
Conjugation: Unconjugated

Modification: Phosphorylated

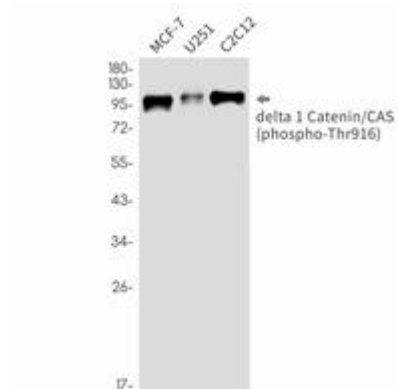
Constituents: PBS (without Mg²⁺ and Ca²⁺), pH 7.3 containing 50% glycerol, 0.5% BSA and 0.02% sodium azide

Research Areas: Cell Biology

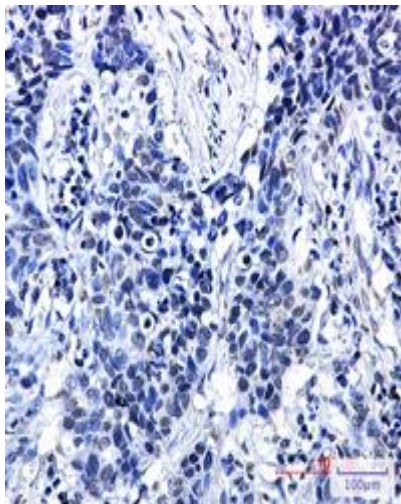
Storage & Shipping: Store at -20°C. Avoid repeated freezing and thawing



Immunocytochemistry analysis of delta 1 Catenin/CAS (Phospho-Thr916) (green) in hela using delta 1 Catenin/CAS (Phospho-Thr916) antibody, and DAPI (blue)



Western blot analysis of Phospho-delta 1 Catenin/CAS (Thr916) in MCF-7, U251, C2C12 lysates using Phospho-delta 1 Catenin (Thr916) antibody.



Immunohistochemistry analysis of paraffin-embedded Human lung cancer using Phospho-delta 1 Catenin/CAS (Thr916) antibody. High-pressure and temperature Sodium Citrate pH 6.0 was used for antigen retrieval.