

PHOSPHO-CYTOKERATIN 8 (SER23) RABBIT MAB

Cat.#: N262110

Product Name: Anti-Phospho-Cytokeratin 8 (Ser23) Rabbit Monoclonal Antibody

Synonyms: KRT8; CYK8; Keratin; type II cytoskeletal 8; Cytokeratin-8; CK-8; Keratin-8; K8; Type-II keratin Kb8

UNIPROT ID: P05787

Background: Together with KRT19, helps to link the contractile apparatus to dystrophin at the costameres of striated muscle. K8 a type II cytoskeletal keratin. The keratins are intermediate filament proteins responsible for the structural integrity of epithelial cells and are subdivided into cytokeratins and hair keratins.

Immunogen: A synthetic phosphopeptide corresponding to residues surrounding Ser23 of human Cytokeratin 8

Applications: WB,IHC-F,IHC-P,ICC/IF,IP

Recommended Dilutions: WB: 1/500-1/1000 IHC: 1/50-1/100 IF: 1/50-1/200 IP: 1/20

Host Species: Rabbit

Clonality: Rabbit Monoclonal

Clone ID: R03-1B3

MW: Calculated MW: 54 kDa; Observed MW: 54 kDa

Isotype: IgG

Purification: Affinity Purified

Species Reactivity: Human

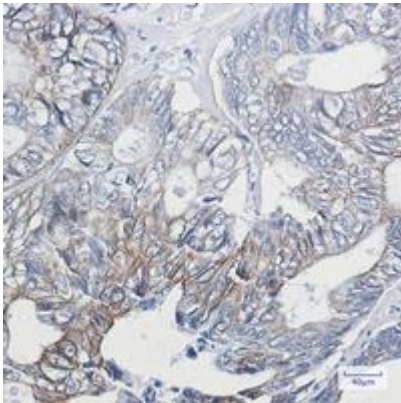
Conjugation: Unconjugated

Modification: Phosphorylated

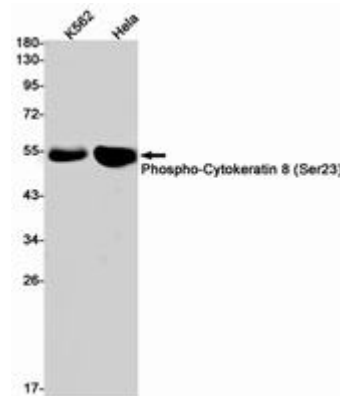
Constituents: PBS (without Mg²⁺ and Ca²⁺), pH 7.3 containing 50% glycerol, 0.5% BSA and 0.02% sodium azide

Research Areas: Signal Transduction

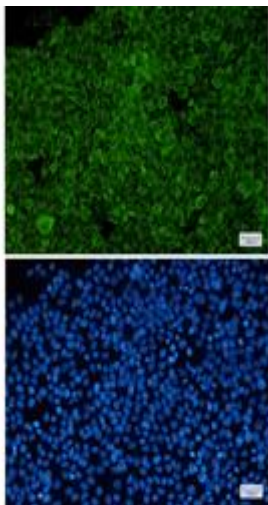
Storage & Shipping: Store at -20°C. Avoid repeated freezing and thawing



Immunohistochemistry analysis of paraffin-embedded Human colon cancer using Cytokeratin 8 (Phospho-Ser23) antibody. High-pressure and temperature Sodium Citrate pH 6.0 was used for antigen retrieval.



Western blot analysis of Phospho-Cytokeratin 8 (Ser23) in K562, HeLa lysates using Phospho-Cytokeratin 8 (Ser23) antibody.



Immunocytochemistry analysis of Cytokeratin 8 (Phospho-Ser23) (green) in HeLa using Cytokeratin 8 (Phospho-Ser23) antibody, and DAPI (blue)