

PHOSPHO-CREB (SER133) RABBIT MAB

Cat.#: N262065

Product Name: Anti-Phospho-CREB (Ser133) Rabbit Monoclonal Antibody

Synonyms: CREB1; Cyclic AMP-responsive element-binding protein 1; CREB-1; cAMP-responsive element-binding protein 1

UNIPROT ID: P16220

Background: This gene encodes a transcription factor that is a member of the leucine zipper family of DNA binding proteins. This protein binds as a homodimer to the cAMP-responsive element, an octameric palindrome.

Immunogen: A synthetic phosphopeptide corresponding to residues surrounding Ser133 of human CREB

Applications: WB,IHC-P,IP

Recommended Dilutions: WB: 1/500-1/1000 IHC: 1/50-1/100 IP: 1/20

Host Species: Rabbit

Clonality: Rabbit Monoclonal

Clone ID: R07-3C4

MW: Calculated MW: 35 kDa; Observed MW: 43 kDa

Isotype: IgG

Purification: Affinity Purified

Species Reactivity: Human,Rat

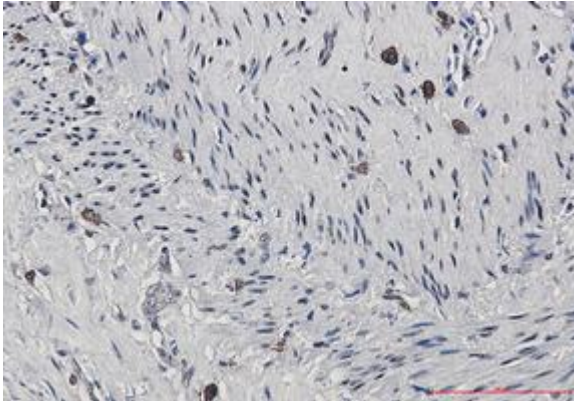
Conjugation: Unconjugated

Modification: Phosphorylated

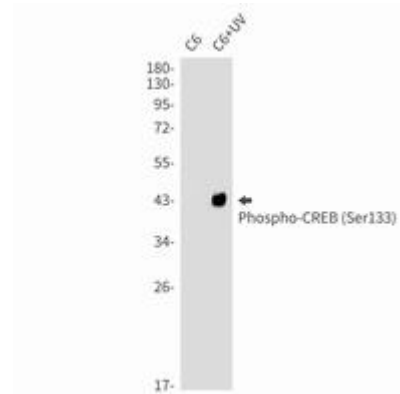
Constituents: PBS (without Mg²⁺ and Ca²⁺), pH 7.3 containing 50% glycerol, 0.5% BSA and 0.02% sodium azide

Research Areas: Epigenetics and Nuclear Signaling

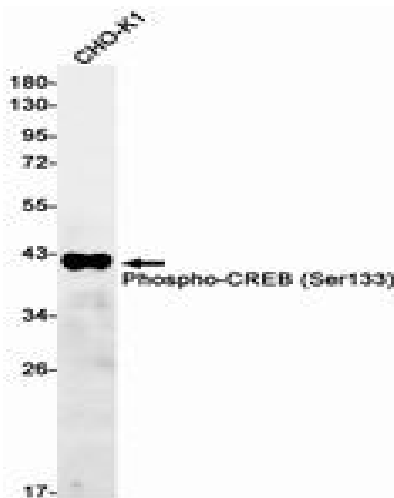
Storage & Shipping: Store at -20°C. Avoid repeated freezing and thawing



Immunohistochemistry analysis of paraffin-embedded Human lung cancer using CREB (Phospho-Ser133) antibody. High-pressure and temperature Sodium Citrate pH 6.0 was used for antigen retrieval.



Western blot analysis of Phospho-CREB (Ser133) in C6, C6+UV lysates using Phospho-CREB (Ser133) antibody.



Western blot analysis of Phospho-CREB (Ser133) in CHO-K1 lysates using Phospho-CREB (Ser133) antibody.