

## PHOSPHO-CD31 (TYR713) RABBIT PAB

**Cat.#:** N225490

**Product Name:** Anti-Phospho-CD31 (Tyr713) Rabbit pAb

**Synonyms:** Platelet endothelial cell adhesion molecule; PECAM-1; EndoCAM; GPIIA<sup>1</sup>; PECA1; CD antigen CD31

**UNIPROT ID:** P16284

**Background:** PECAM-1 a cell adhesion molecule expressed on platelets and at endothelial cell intercellular junctions. Plays a role in modulation of integrin-mediated cell adhesion, transendothelial migration, angiogenesis, apoptosis, cell migration, negative regulation of immune cell signaling, autoimmunity, macrophage phagocytosis, IgE-mediated anaphylaxis and thrombosis. Undergoes alternative splicing, generating multiple isoforms in vascular beds of various tissues.

**Immunogen:** The antiserum was produced against synthesized peptide derived from human PECAM-1 around the phosphorylation site of Tyr713. AA range:686-735

**Applications:** ELISA,IHC-F,IHC-P,WB,ICC/IF

**Recommended Dilutions:** WB: 1/500-1/1000 IHC: 1/50-1/100 IF: 1/50-1/200 ELISA: 1/10000

**Host Species:** Rabbit

**Clonality:** Rabbit Polyclonal

**Clone ID:** -

**MW:** Calculated MW: 83 kDa; Observed MW: 150 kDa

**Isotype:** IgG

**Purification:** Affinity Chromatography

**Species Reactivity:** Human,Mouse

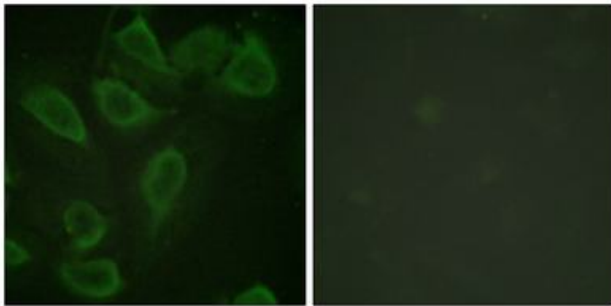
**Conjugation:** Unconjugated

**Modification:** Phosphorylated

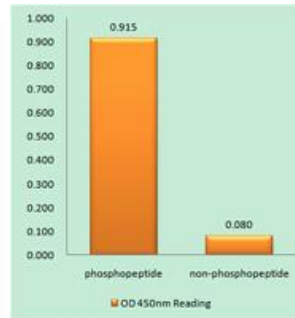
**Constituents:** PBS (without Mg<sup>2+</sup> and Ca<sup>2+</sup>), pH 7.3 containing 50% glycerol, 0.5% BSA and 0.02% sodium azide

**Research Areas:** Cardiovascular

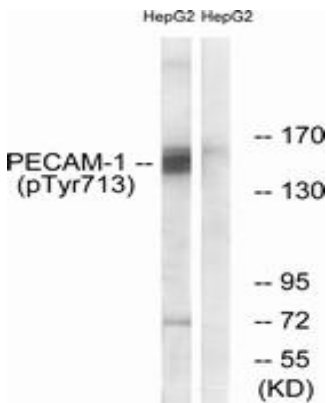
**Storage & Shipping:** Store at -20°C. Avoid repeated freezing and thawing



Immunofluorescence analysis of Phospho-CD31 (Tyr713) in HeLa using Phospho-CD31 (Tyr713) antibody. The picture on the right is blocked with the Phospho- peptide.



EnzymeLinked Immunosorbent Assay (Phospho-ELISA) for Immunogen Phospho-peptide (Phospho-left) and NonPhospho-peptide (Phospho-right), using PECAM1 (Phospho-Tyr71antibody



Western blot analysis of Phospho-CD31 (Tyr713) in HepG2 lysates using Phospho-CD31 (Tyr713) antibody. The lane on the right is blocked with the Phospho- peptide.