

## PHOSPHO-ATF2 (THR71) RABBIT MAB

**Cat.#:** N261883

**Product Name:** Anti-Phospho-ATF2 (Thr71) Rabbit Monoclonal Antibody

**Synonyms:** ATF2; CREB2; CREBP1; Cyclic AMP-dependent transcription factor ATF-2; cAMP-dependent transcription factor ATF-2; Activating transcription factor 2; Cyclic AMP-responsive element-binding protein 2; CREB-2; cAMP-responsive element-binding pro

**UNIPROT ID:** P15336

**Background:** This gene encodes a transcription factor that is a member of the leucine zipper family of DNA binding proteins. This protein binds to the cAMP-responsive element (CRE), an octameric palindrome. The protein forms a homodimer or heterodimer with c-Jun and stimulates CRE-dependent transcription. The protein is also a histone acetyltransferase (HAT) that specifically acetylates histones H2B and H4 in vitro;

**Immunogen:** A synthetic phosphopeptide corresponding to residues surrounding Thr71 of human ATF2

**Applications:** WB, ICC/IF, IP

**Recommended Dilutions:** WB: 1/500-1/1000 IF: 1/50-1/200 IP: 1/20

**Host Species:** Rabbit

**Clonality:** Rabbit Monoclonal

**Clone ID:** R07-3E5

**MW:** Calculated MW: 55 kDa; Observed MW: 70 kDa

**Isotype:** IgG

**Purification:** Affinity Purified

**Species Reactivity:** Human, Mouse

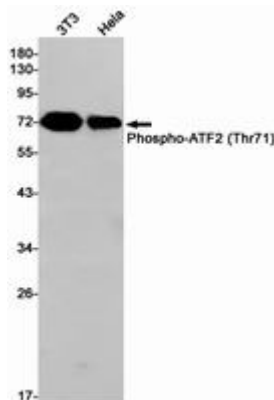
**Conjugation:** Unconjugated

**Modification:** Phosphorylated

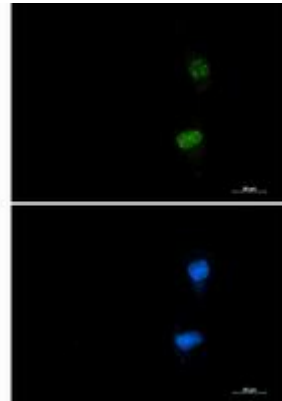
**Constituents:** PBS (without Mg<sup>2+</sup> and Ca<sup>2+</sup>), pH 7.3 containing 50% glycerol, 0.5% BSA and 0.02% sodium azide

**Research Areas:** Epigenetics and Nuclear Signaling

**Storage & Shipping:** Store at -20°C. Avoid repeated freezing and thawing



Western blot analysis of Phospho-ATF2 (Thr71) in 3T3, Hela lysates using Phospho-ATF2 (Thr71) antibody.



Immunocytochemistry analysis of Phospho-ATF2 (Thr71) (green) in U87-MG using Phospho-ATF2 (Thr71) antibody, and DAPI (blue).