

PHOSPHO-AMPK ALPHA 1/2 (THR183/THR172) RABBIT PAB

Cat.#: N225380

Product Name: Anti-Phospho-AMPK alpha 1/2 (Thr183/Thr172) Rabbit pAb

Synonyms: PRKAA1; AMPK1; 5' -AMP-activated protein kinase catalytic subunit alpha-1; AMPK subunit alpha-1; Acetyl-CoA carboxylase kinase; ACACA kinase; Hydroxymethylglutaryl-CoA reductase kinase; HMGCR kinase; Tau-protein kinase PRKAA1; PRKAA2; AMPK

UNIPROT ID: Q13131/P54646

Background: AMP-activated protein kinase (AMPK) is highly conserved from yeast to plants and animals and plays a key role in the regulation of energy homeostasis. AMPK is a heterotrimeric complex composed of a catalytic α subunit and regulatory β and γ subunits, each of which is encoded by two or three distinct genes (α 1, 2; β 1, 2; γ 1, 2, 3).

Immunogen: The antiserum was produced against synthesized peptide derived from human AMPK alpha around the phosphorylation site of Thr172. AA range:140-189

Applications: ICC/IF, WB, IHC-F, IHC-P, ELISA

Recommended Dilutions: WB: 1/500-1/1000 IHC: 1/50-1/100 IF: 1/50-1/200 ELISA: 1/10000

Host Species: Rabbit

Clonality: Rabbit Polyclonal

Clone ID: -

MW: Calculated MW: 64 kDa; Observed MW: 64 kDa

Isotype: IgG

Purification: Affinity Chromatography

Species Reactivity: Human, Mouse, Rat, Monkey, Pig

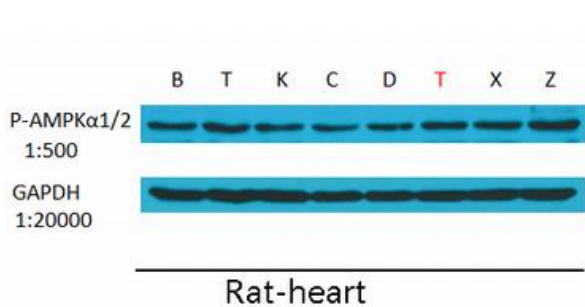
Conjugation: Unconjugated

Modification: Phosphorylated

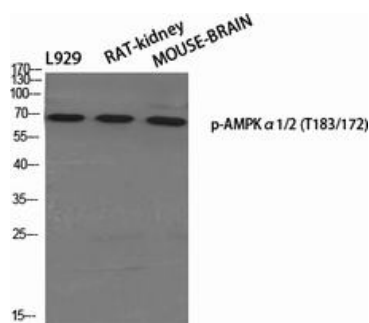
Constituents: PBS (without Mg²⁺ and Ca²⁺), pH 7.3 containing 50% glycerol, 0.5% BSA and 0.02% sodium azide

Research Areas: Signal Transduction

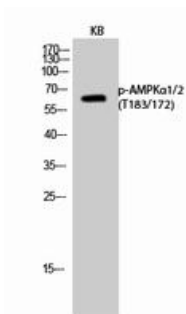
Storage & Shipping: Store at -20°C. Avoid repeated freezing and thawing



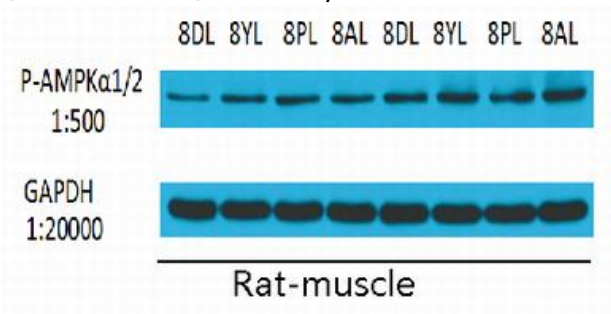
Western blot analysis of Phospho-AMPK alpha 1/2 in rat muscle heart using Phospho-AMPK alpha 1/2 antibody.



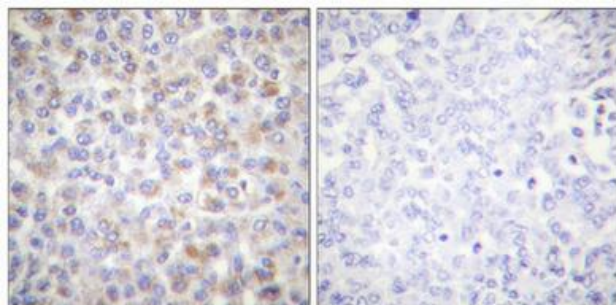
Western blot analysis of Phospho-AMPK alpha 1/2 (Thr183/Thr172) in various lysates using Phospho-AMPK alpha 1/2 (Thr183/Thr172) antibody.



Western blot analysis of Phospho-AMPK alpha 1/2 (Thr183/Thr172) in KB lysates using Phospho-AMPK alpha 1/2 (T183/17, 2) antibody.



Western blot analysis of Phospho-AMPK alpha 1/2 in rat muscle lysates using Phospho-AMPK alpha 1/2 antibody.



Immunohistochemistry analysis of paraffin-embedded Human breast cancer using Phospho-AMPK alpha 1/2 (Thr183/Thr172) antibody. High-pressure and temperature Tris-EDTA pH 8.0 was used for antigen retrieval. Negative control (right) obtained from antibody was preabsorbed by immunogen peptide.