

PHOSPHO-ALPHA SYNUCLEIN (SER129) RABBIT PAB

Cat.#: N225297

Product Name: Anti-Phospho-alpha Synuclein (Ser129) Rabbit pAb

Synonyms: SNCA; NACP; PARK1; Alpha-synuclein; Non-A4 beta component of AD amyloid; Non-A4 component of amyloid precursor; NACP

UNIPROT ID: P37840

Background: May be involved in the regulation of dopamine release and transport. Induces fibrillization of microtubule-associated protein tau. Reduces neuronal responsiveness to various apoptotic stimuli, leading to a decreased caspase-3 activation. Genetic alterations of SNCA resulting in aberrant polymerization into fibrils, are associated with several neurodegenerative diseases (synucleinopathies).

Immunogen: Synthetic peptide of human SNCA

Applications: WB,IHC-P

Recommended Dilutions: WB: 1/500-1/1000 IHC: 1/50-1/100

Host Species: Rabbit

Clonality: Rabbit Polyclonal

Clone ID: -

MW: Calculated MW: 14 kDa; Observed MW: 18 kDa

Isotype: IgG

Purification: Affinity Purified

Species Reactivity: Human,Mouse,Rat

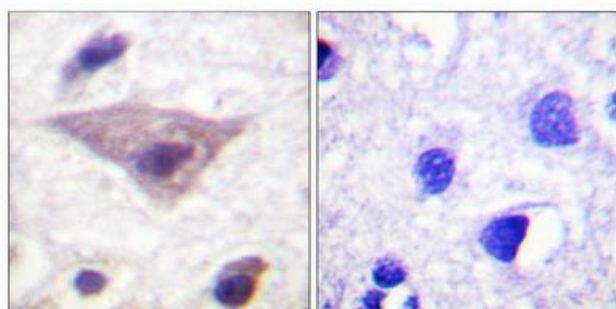
Conjugation: Unconjugated

Modification: Phosphorylated

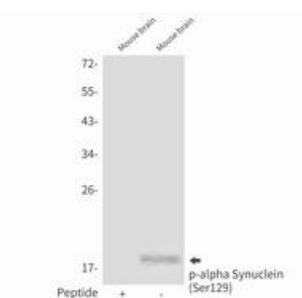
Constituents: PBS (without Mg²⁺ and Ca²⁺), pH 7.3 containing 50% glycerol, 0.5% BSA and 0.02% sodium azide

Research Areas: Neuroscience

Storage & Shipping: Store at -20°C. Avoid repeated freezing and thawing



Immunohistochemistry analysis of paraffin-embedded Human brain using Synuclein (Phospho-Ser129) antibody. High-pressure and temperature Sodium Citrate pH 6.0 was used for antigen retrieval. Sample with blocking peptide on the right.



Western blot analysis of Phospho-alpha Synuclein (Ser129) in mouse brain lysates using Phospho-alpha Synuclein (Ser129) antibody.



Product Description

Pioneering GTPase and Oncogene Product Development since 2010
