

PHOSPHO-4E BP1 (THR46) RABBIT MAB

Cat.#: N261722

Product Name: Anti-Phospho-4E BP1 (Thr46) Rabbit Monoclonal Antibody

Synonyms: EIF4EBP1; Eukaryotic translation initiation factor 4E-binding protein 1; 4E-BP1; eIF4E-binding protein 1; Phosphorylated heat- and acid-stable protein regulated by insulin 1; PHAS-I

UNIPROT ID: Q13541

Background: Translation repressor protein 4E-BP1 (also known as PHAS-1) inhibits cap-dependent translation by binding to the translation initiation factor eIF4E. Hyperphosphorylation of 4E-BP1 disrupts this interaction and results in activation of cap-dependent translation. Both the PI3 kinase/Akt pathway and FRAP/mTOR kinase regulate 4E-BP1 activity.

Immunogen: A synthetic phosphopeptide corresponding to residues surrounding Thr45 of human eIF4EBP1

Applications: WB,IHC-P,IP

Recommended Dilutions: WB: 1/500-1/1000 IHC: 1/50-1/100 IP: 1/20

Host Species: Rabbit

Clonality: Rabbit Monoclonal

Clone ID: R03-5C7

MW: Calculated MW: 13 kDa; Observed MW: 15-20 kDa

Isotype: IgG

Purification: Affinity Purified

Species Reactivity: Human,Mouse,Rat

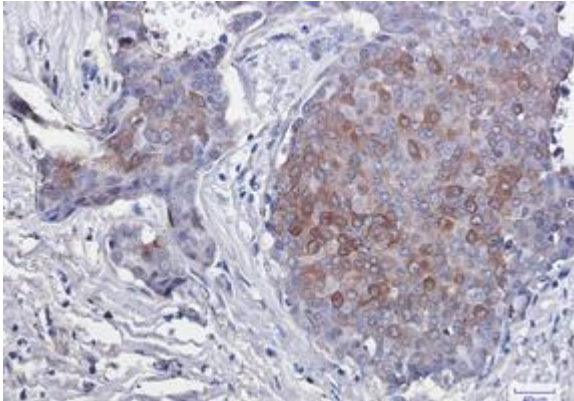
Conjugation: Unconjugated

Modification: Phosphorylated

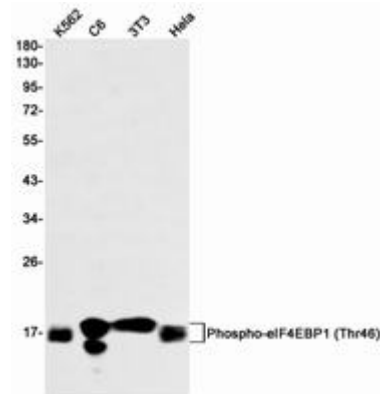
Constituents: PBS (without Mg²⁺ and Ca²⁺), pH 7.3 containing 50% glycerol, 0.5% BSA and 0.02% sodium azide

Research Areas: Epigenetics and Nuclear Signaling

Storage & Shipping: Store at -20°C. Avoid repeated freezing and thawing



Immunohistochemistry analysis of paraffin-embedded Human breast cancer using eIF4EBP1/eIF4EBP2/eIF4EBP3 (Phospho- T45) antibody. High-pressure and temperature Sodium Citrate pH 6.0 was used for antigen retrieval.



Western blot analysis of Phospho-eIF4EBP1 (Thr46) in K562, C6, 3T3, HeLa lysates using Phospho-4E BP1 (Thr46) antibody.