

PHOSHO-ERBB 2/EGFR (TYR1248/TYR1173) RABBIT MAB

Cat.#: N261715

Product Name: Anti-Phosho-ErbB 2/EGFR (Tyr1248/Tyr1173) Rabbit Monoclonal Antibody

Synonyms: ERBB2; HER2; MLN19; NEU; NGL; Receptor tyrosine-protein kinase erbB-2; Metastatic lymph node gene 19 protein; MLN 19; Proto-oncogene Neu; Proto-oncogene c-ErbB-2; Tyrosine kinase-type cell surface receptor HER2; p185erbB2; CD antigen CD340

UNIPROT ID: P04626

Background: This gene encodes a member of the epidermal growth factor (EGF) receptor family of receptor tyrosine kinases. This protein has no ligand binding domain of its own and therefore cannot bind growth factors. However, it does bind tightly to other ligand-bound EGF receptor family members to form a heterodimer, stabilizing ligand binding and enhancing kinase-mediated activation of downstream signalling pathways, such as those involving mitogen-activated protein kinase and phosphatidylinositol-3 kinase.

Immunogen: A synthetic phosphopeptide corresponding to residues surrounding Tyr1248 of human ErbB 2

Applications: WB,IP

Recommended Dilutions: WB: 1/500-1/1000 IP: 1/20

Host Species: Rabbit

Clonality: Rabbit Monoclonal

Clone ID: R03-6A8

MW: Calculated MW: 138 kDa; Observed MW: 180 kDa

Isotype: IgG

Purification: Affinity Purified

Species Reactivity: Human

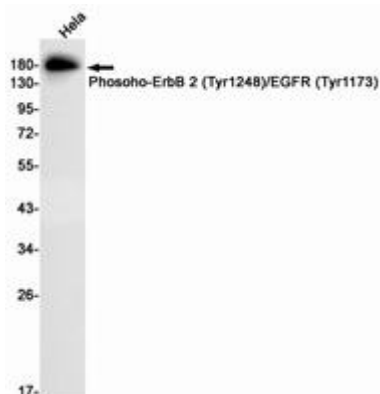
Conjugation: Unconjugated

Modification: Phosphorylated

Constituents: PBS (without Mg²⁺ and Ca²⁺), pH 7.3 containing 50% glycerol, 0.5% BSA and 0.02% sodium azide

Research Areas: Cancer

Storage & Shipping: Store at -20°C. Avoid repeated freezing and thawing



Western blot analysis of PhosphoErbB 2 (Tyr1248)/EGFR (Tyr1173) in HeLa lysates using PhosphoErbB 2/EGFR (Tyr1248/Tyr1173) antibody.