

PHLDA3 RABBIT PAB

Cat.#: S219195

Product Name: Anti-PHLDA3 Rabbit Polyclonal Antibody

Synonyms: TIH1

UNIPROT ID: Q9Y5J5 (Gene Accession - BC014390)

Background: p53/TP53-regulated repressor of Akt/AKT1 signaling. Represses AKT1 by preventing AKT1-binding to membrane lipids, thereby inhibiting AKT1 translocation to the cellular membrane and activation. Contributes to p53/TP53-dependent apoptosis by repressing AKT1 activity. Its direct transcription regulation by p53/TP53 may explain how p53/TP53 can negatively regulate AKT1. May act as a tumor suppressor.

Immunogen: Fusion protein of human PHLDA3

Applications: ELISA, IHC

Recommended Dilutions: IHC: 100-300; ELISA: 5000-10000

Host Species: Rabbit

Clonality: Rabbit Polyclonal

Isotype: Immunogen-specific rabbit IgG

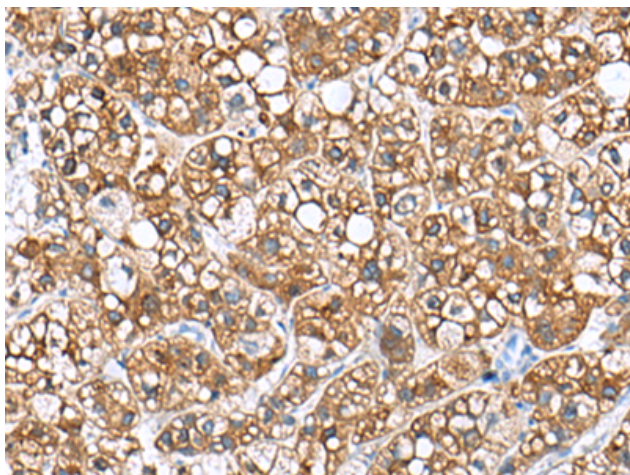
Purification: Antigen affinity purification

Species Reactivity: Human, Mouse, Rat

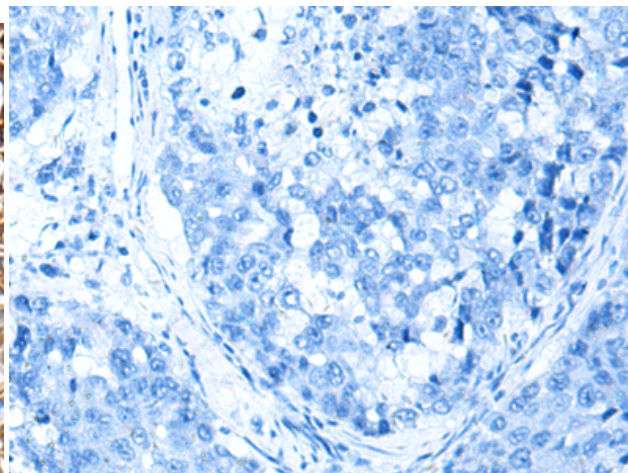
Constituents: PBS (without Mg²⁺ and Ca²⁺), pH 7.4, 150 mM NaCl, 0.05% Sodium Azide and 40% glycerol

Research Areas: Cell Biology

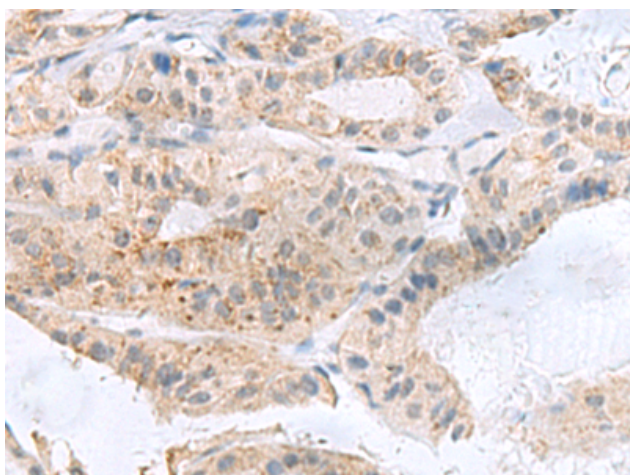
Storage & Shipping: Store at -20°C. Avoid repeated freezing and thawing



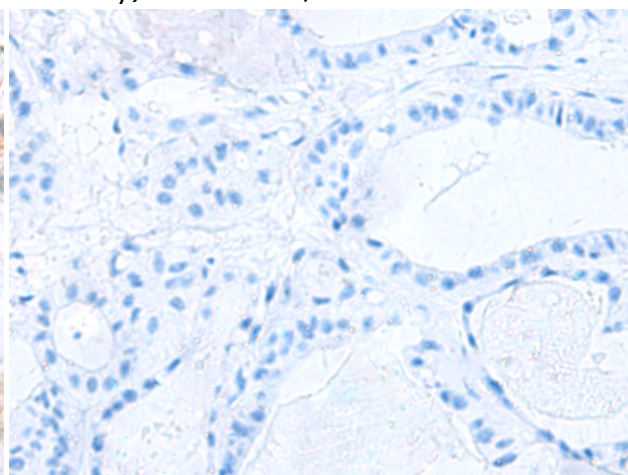
Immunohistochemistry analysis of paraffin embedded Human liver cancer tissue using 219195(PhLDA3 Antibody) at a dilution of 1/110(Cytoplasm).



In comparison with the IHC on the left, the same paraffin-embedded Human liver cancer tissue is first treated with the fusion protein and then with 219195(Anti-PhLDA3 Antibody) at dilution 1/110.



The image on the left is immunohistochemistry of paraffin-embedded Human thyroid cancer tissue using 219195(Anti-PhLDA3 Antibody) at a dilution of 1/110.



In comparison with the IHC on the left, the same paraffin-embedded Human thyroid cancer tissue is first treated with fusion protein and then with D226034(Anti-PhLDA3 Antibody) at dilution 1/110.