

## PHB RABBIT PAB

**Cat.#:** S216727

**Product Name:** Anti-PHB Rabbit Polyclonal Antibody

**Synonyms:** PHB1

**UNIPROT ID:** P35232 (Gene Accession - BC013401)

**Background:** This gene is evolutionarily conserved, and its product is proposed to play a role in human cellular senescence and tumor suppression. Antiproliferative activity is reported to be localized to the 3' UTR, which is proposed to function as a trans-acting regulatory RNA. Several pseudogenes of this gene have been identified. Alternative splicing results in multiple transcript variants

**Immunogen:** Fusion protein of human PHB

**Applications:** ELISA, WB, IHC

**Recommended Dilutions:** IHC: 50-200;WB: 500-2000;ELISA: 2000-5000

**Host Species:** Rabbit

**Clonality:** Rabbit Polyclonal

**Isotype:** Immunogen-specific rabbit IgG

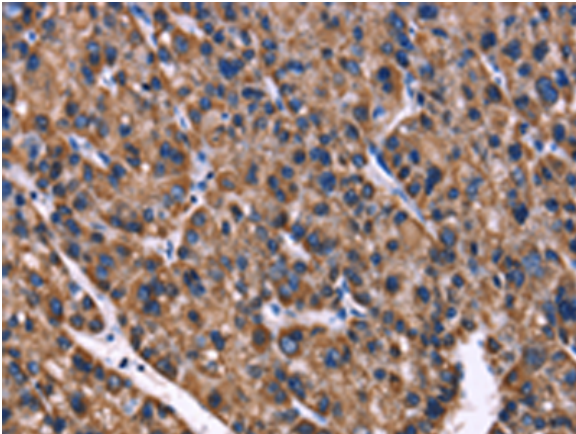
**Purification:** Antigen affinity purification

**Species Reactivity:** Human, Mouse, Rat

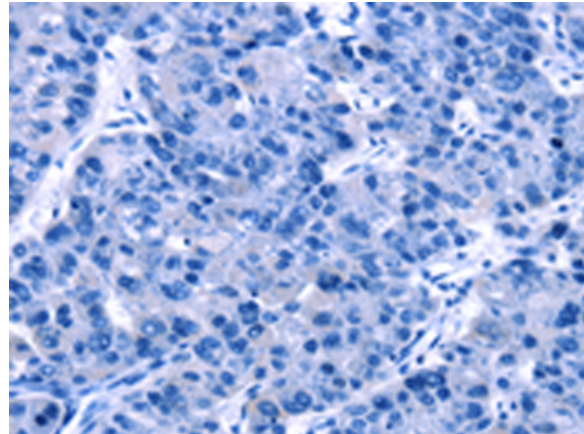
**Constituents:** PBS (without Mg<sup>2+</sup> and Ca<sup>2+</sup>), pH 7.4, 150 mM NaCl, 0.05% Sodium Azide and 40% glycerol

**Research Areas:** Epigenetics and Nuclear Signaling, Cancer, Metabolism

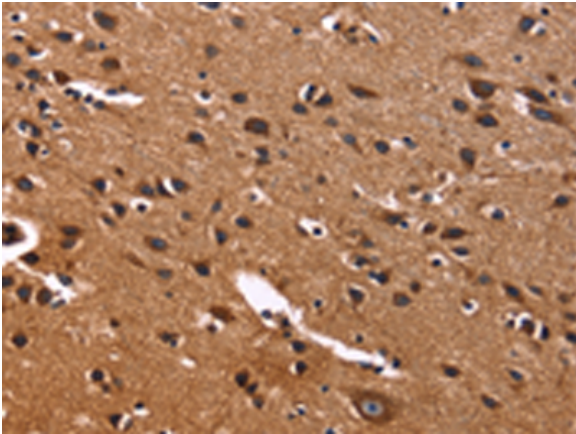
**Storage & Shipping:** Store at -20°C. Avoid repeated freezing and thawing



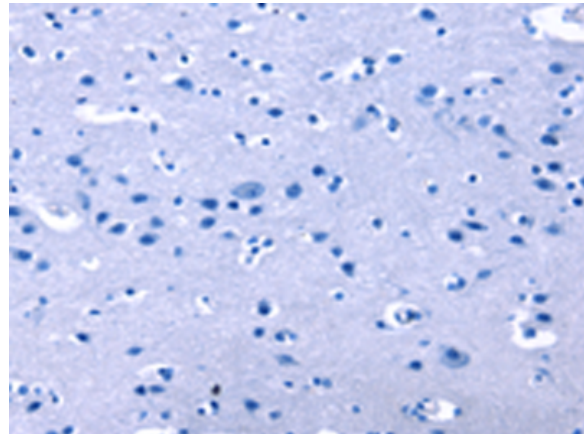
Immunohistochemistry analysis of paraffin embedded Human liver cancer tissue using 216727(PHB Antibody) at a dilution of 1/40(Cytoplasm).



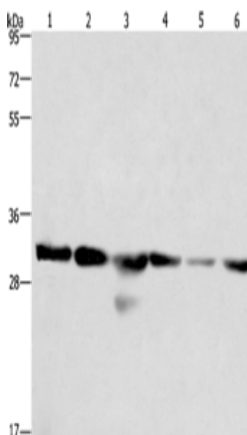
In comparison with the IHC on the left, the same paraffin-embedded Human liver cancer tissue is first treated with the fusion protein and then with 216727(Anti-PHB Antibody) at dilution 1/40.



The image on the left is immunohistochemistry of paraffin-embedded Human brain tissue using 216727(Anti-PHB Antibody) at a dilution of 1/40.



In comparison with the IHC on the left, the same paraffin-embedded Human brain tissue is first treated with fusion protein and then with D221131(Anti-PHB Antibody) at dilution 1/40.



Gel: 10%SDS-PAGE, Lysate: 40  $\mu$ g;  
Lane 1-6: 293T cells, A549 cells, human hepatocellular carcinoma tissue, PC3 cells, hela cells, mouse heart tissue;  
Primary antibody: 216727(PHB Antibody) at dilution 1/500;  
Secondary antibody: Goat anti rabbit IgG at 1/8000 dilution;  
Exposure time: 15 seconds



# Product Description

Pioneering GTPase and Oncogene Product Development since 2010

---