

## PGRMC2 RABBIT PAB

**Cat.#:** S211421

**Product Name:** Anti-PGRMC2 Rabbit Polyclonal Antibody

**Synonyms:** DG6; PMBP

**UNIPROT ID:** O15173 (Gene Accession - BC016692 )

**Background:** PGRMC2 (progesterone receptor membrane component 2), also known as DG6 (steroid receptor protein DG6) or PMBP (progesterone membrane-binding protein), is a single pass membrane protein belonging to the cytochrome b5 family (MAPR (membrane associated progesterone receptor) subfamily). Expressed in sperm, PGRMC2 is believed to function as a steroid receptor and may participate in the progesterone-dependent sperm acrosome reaction. PGRMC2 shares approximately 50% overall sequence identity with its close relative PGRMC1. The loss of the gene encoding PGRMC2 is associated with metastasis in uterine endocervical adenocarcinomas, implicating a potential role of PGRMC2 in the suppression of metastasis of endocervical adenocarcinomas.

**Immunogen:** Fusion protein of human PGRMC2

**Applications:** ELISA, WB, IHC

**Recommended Dilutions:** IHC: 50-200;WB: 500-2000;ELISA: 5000-10000

**Host Species:** Rabbit

**Clonality:** Rabbit Polyclonal

**Isotype:** Immunogen-specific rabbit IgG

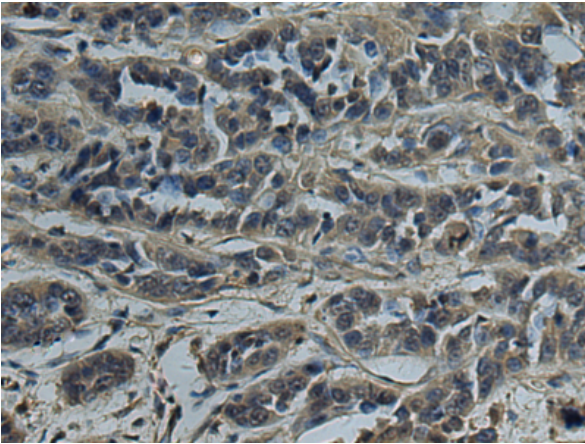
**Purification:** Antigen affinity purification

**Species Reactivity:** Human, Mouse, Rat

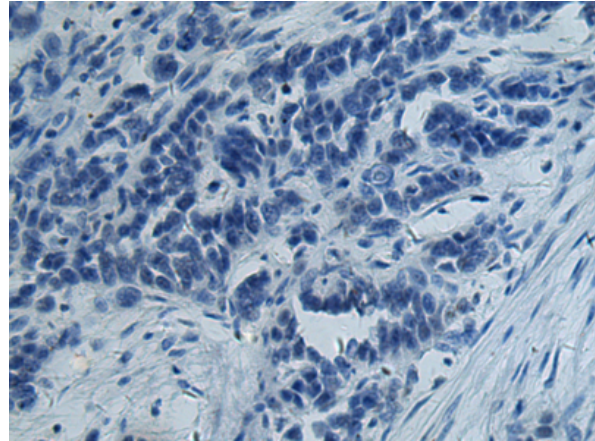
**Constituents:** PBS (without Mg<sup>2+</sup> and Ca<sup>2+</sup>), pH 7.4, 150 mM NaCl, 0.05% Sodium Azide and 40% glycerol

**Research Areas:** Signal Transduction

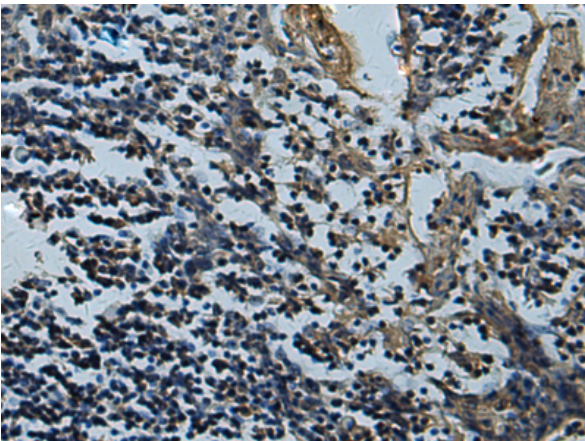
**Storage & Shipping:** Store at -20°C. Avoid repeated freezing and thawing



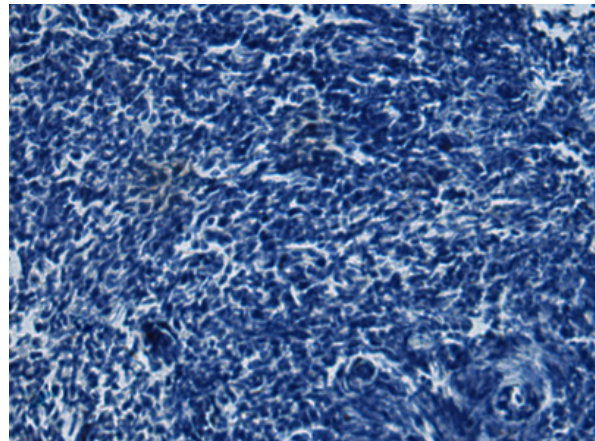
Immunohistochemistry analysis of paraffin embedded Human thyroid cancer tissue using 211421(PGRMC2 Antibody) at a dilution of 1/70(Cytoplasm).



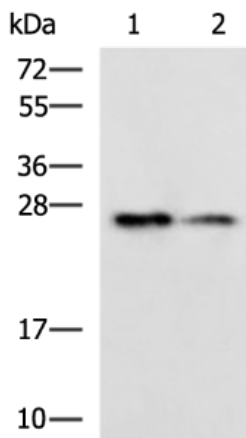
In comparison with the IHC on the left, the same paraffin-embedded Human thyroid cancer tissue is first treated with the fusion protein and then with 211421(Anti-PGRMC2 Antibody) at dilution 1/70.



The image on the left is immunohistochemistry of paraffin-embedded Human tonsil tissue using 211421(Anti-PGRMC2 Antibody) at a dilution of 1/70.



In comparison with the IHC on the left, the same paraffin-embedded Human tonsil tissue is first treated with fusion protein and then with D122869(Anti-PGRMC2 Antibody) at dilution 1/70.



Gel: 12%SDS-PAGE, Lysate: 40 µg;  
Lane 1-2: RAW264.7 and NIH/3T3 cell lysates;  
Primary antibody: 211421(PGRMC2 Antibody) at dilution 1/1000;  
Secondary antibody: HRP-conjugated Goat anti rabbit IgG at 1/5000 dilution;  
Exposure time: 1 minute



# Product Description

Pioneering GTPase and Oncogene Product Development since 2010

---