

PGRMC1 RABBIT PAB

Cat.#: S217687

Product Name: Anti-PGRMC1 Rabbit Polyclonal Antibody

Synonyms: MPR; HPR6.6

UNIPROT ID: O00264 (Gene Accession - BC034238)

Background: This gene encodes a putative membrane-associated progesterone steroid receptor. The protein is expressed predominantly in the liver and kidney.

Immunogen: Fusion protein of human PGRMC1

Applications: ELISA, WB, IHC

Recommended Dilutions: IHC: 25-100;WB: 200-1000;ELISA: 5000-10000

Host Species: Rabbit

Clonality: Rabbit Polyclonal

Isotype: Immunogen-specific rabbit IgG

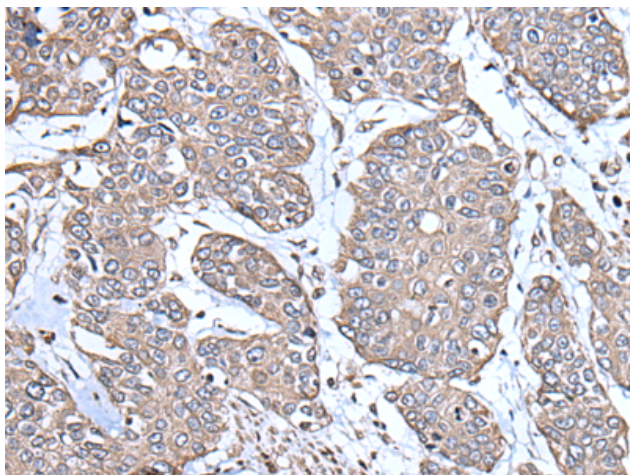
Purification: Antigen affinity purification

Species Reactivity: Human, Mouse, Rat

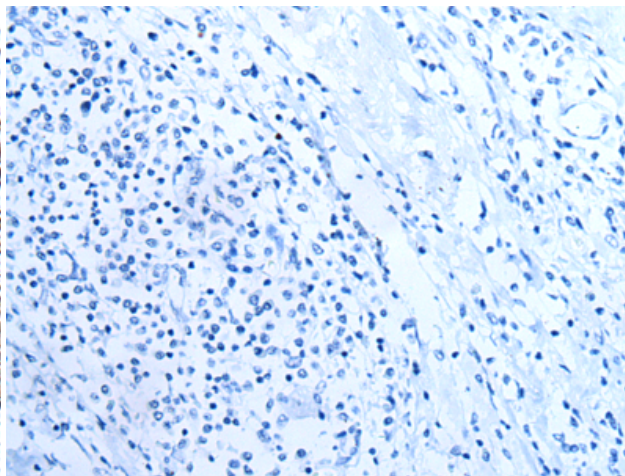
Constituents: PBS (without Mg²⁺ and Ca²⁺), pH 7.4, 150 mM NaCl, 0.05% Sodium Azide and 40% glycerol

Research Areas: Signal Transduction, Cancer, Cardiovascular

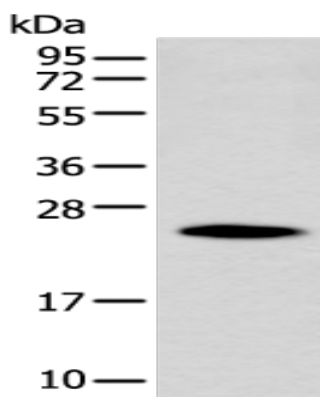
Storage & Shipping: Store at -20°C. Avoid repeated freezing and thawing



Immunohistochemistry analysis of paraffin embedded Human prostate cancer tissue using 217687(PGRMC1 Antibody) at a dilution of 1/30(Cytoplasm).



In comparison with the IHC on the left, the same paraffin-embedded Human prostate cancer tissue is first treated with the fusion protein and then with 217687(Anti-PGRMC1 Antibody) at dilution 1/30.



Gel: 12%SDS-PAGE, Lysate: 40 μ g;
Lane: Human kidney tissue lysate;
Primary antibody: 217687(PGRMC1 Antibody)
at dilution 1/250;
Secondary antibody: Goat anti rabbit IgG at
1/8000 dilution;
Exposure time: 60 seconds