

## PGR RABBIT PAB

**Cat.#:** S220178

**Product Name:** Anti-PGR Rabbit Polyclonal Antibody

**Synonyms:** PR; NR3C3

**UNIPROT ID:** P06401 (Gene Accession - NP\_000917 )

**Background:** This gene encodes a member of the steroid receptor superfamily. The encoded protein mediates the physiological effects of progesterone, which plays a central role in reproductive events associated with the establishment and maintenance of pregnancy. This gene uses two distinct promoters and translation start sites in the first exon to produce several transcript variants, both protein coding and non-protein coding. Two of the isoforms (A and B) are identical except for an additional 165 amino acids found in the N-terminus of isoform B and mediate their own response genes and physiologic effects with little overlap.

**Immunogen:** Synthetic peptide of human PGR

**Applications:** ELISA, IHC

**Recommended Dilutions:** IHC: 50-100; ELISA: 5000-10000

**Host Species:** Rabbit

**Clonality:** Rabbit Polyclonal

**Isotype:** Immunogen-specific rabbit IgG

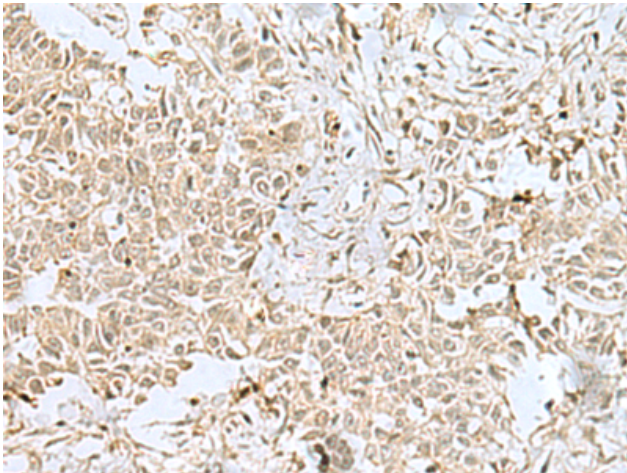
**Purification:** Antigen affinity purification

**Species Reactivity:** Human

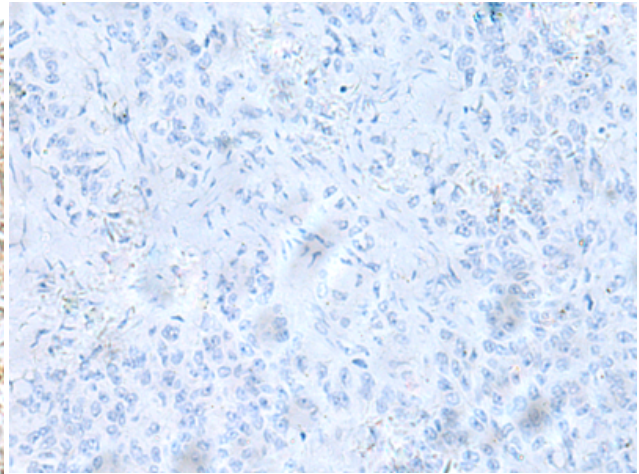
**Constituents:** PBS (without Mg<sup>2+</sup> and Ca<sup>2+</sup>), pH 7.4, 150 mM NaCl, 0.05% Sodium Azide and 40% glycerol

**Research Areas:** Signal Transduction, Epigenetics and Nuclear Signaling, Cancer, Neuroscience

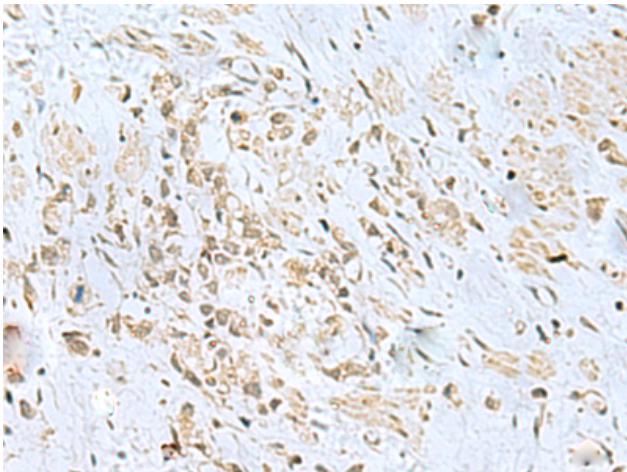
**Storage & Shipping:** Store at -20°C. Avoid repeated freezing and thawing



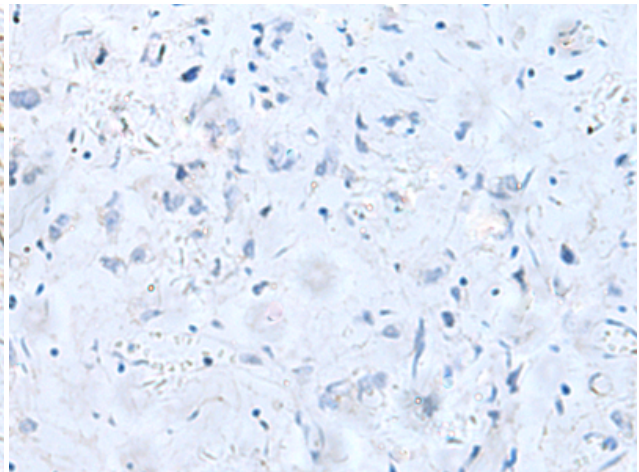
Immunohistochemistry analysis of paraffin embedded Human ovarian cancer tissue using 220178 (PGR Antibody) at a dilution of 1/40 (Nucleus).



In comparison with the IHC on the left, the same paraffin-embedded Human ovarian cancer tissue is first treated with the synthetic peptide and then with 220178 (Anti-PGR Antibody) at dilution 1/40.



The image on the left is immunohistochemistry of paraffin-embedded Human gastric cancer tissue using 220178 (Anti-PGR Antibody) at a dilution of 1/40.



In comparison with the IHC on the left, the same paraffin-embedded Human gastric cancer tissue is first treated with synthetic peptide and then with D261090 (Anti-PGR Antibody) at dilution 1/40.