

PGM3 RABBIT PAB

Cat.#: S219498

Product Name: Anti-PGM3 Rabbit Polyclonal Antibody

Synonyms: AGM1; PAGM; IMD23; PGM 3

UNIPROT ID: O95394 (Gene Accession - BC001258)

Background: This gene encodes a member of the phosphohexose mutase family. The encoded protein mediates both glycogen formation and utilization by catalyzing the interconversion of glucose-1-phosphate and glucose-6-phosphate. A non-synonymous single nucleotide polymorphism in this gene may play a role in resistance to diabetic nephropathy and neuropathy. Alternatively spliced transcript variants encoding multiple isoforms have been observed for this gene.

Immunogen: Fusion protein of human PGM3

Applications: ELISA, WB, IHC

Recommended Dilutions: IHC: 50-200;WB: 500-2000;ELISA: 5000-10000

Host Species: Rabbit

Clonality: Rabbit Polyclonal

Isotype: Immunogen-specific rabbit IgG

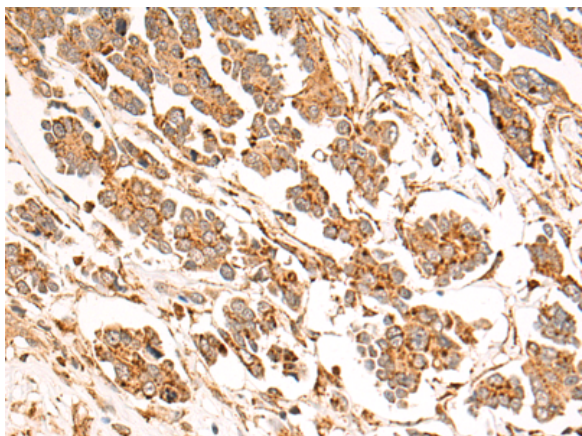
Purification: Antigen affinity purification

Species Reactivity: Human, Mouse

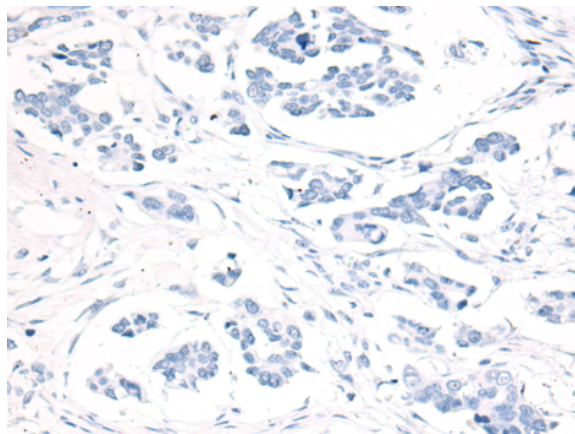
Constituents: PBS (without Mg²⁺ and Ca²⁺), pH 7.4, 150 mM NaCl, 0.05% Sodium Azide and 40% glycerol

Research Areas: Metabolism

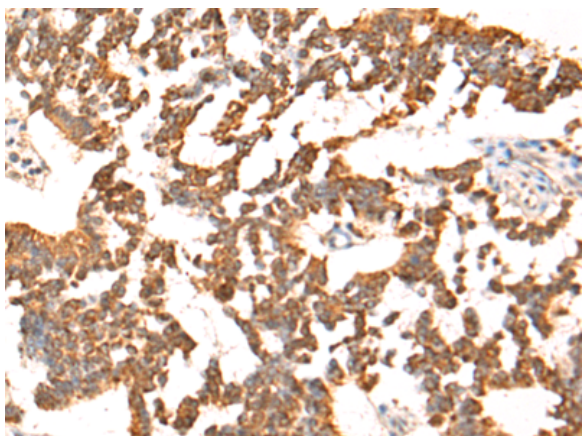
Storage & Shipping: Store at -20°C. Avoid repeated freezing and thawing



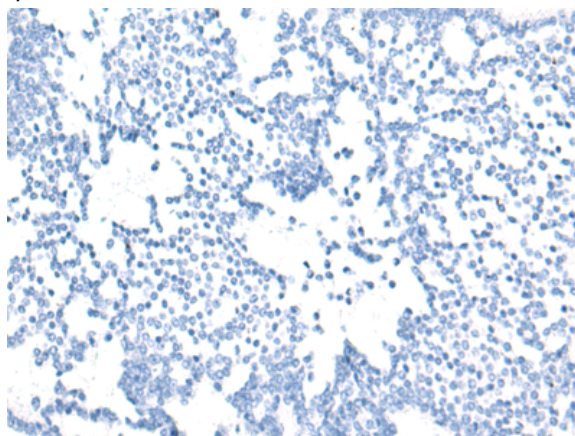
Immunohistochemistry analysis of paraffin embedded Human colorectal cancer tissue using 219498(PGM3 Antibody) at a dilution of 1/75(Cytoplasm).



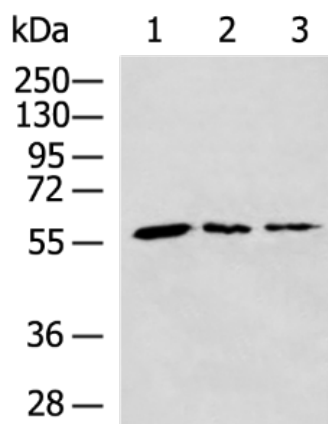
In comparison with the IHC on the left, the same paraffin-embedded Human colorectal cancer tissue is first treated with the fusion protein and then with 219498(Anti-PGM3 Antibody) at dilution 1/75.



The image on the left is immunohistochemistry of paraffin-embedded Human liver cancer tissue using 219498(Anti-PGM3 Antibody) at a dilution of 1/75.



In comparison with the IHC on the left, the same paraffin-embedded Human liver cancer tissue is first treated with fusion protein and then with D227388(Anti-PGM3 Antibody) at dilution 1/75.



Gel: 8%SDS-PAGE, Lysate: 40 µg;
 Lane 1-3: Mouse brain tissue, Hela cell, HepG2 cell lysates;
 Primary antibody: 219498(PGM3 Antibody) at dilution 1/600;
 Secondary antibody: HRP-conjugated Goat anti rabbit IgG at 1/5000 dilution;
 Exposure time: 15 seconds



Product Description

Pioneering GTPase and Oncogene Product Development since 2010
