

## PFN4 RABBIT PAB

**Cat.#:** S216739

**Product Name:** Anti-PFN4 Rabbit Polyclonal Antibody

**Synonyms:**

**UNIPROT ID:** Q8NHR9 (Gene Accession - BC029523 )

**Background:** This gene belongs to the profilin family. It binds to actin and affects the structure of the cytoskeleton. Mostly expression in testes, pituitary gland, midbrain, bone marrow, vulva.

**Immunogen:** Fusion protein of human PFN4

**Applications:** ELISA, IHC

**Recommended Dilutions:** IHC: 25-100; ELISA: 1000-5000

**Host Species:** Rabbit

**Clonality:** Rabbit Polyclonal

**Isotype:** Immunogen-specific rabbit IgG

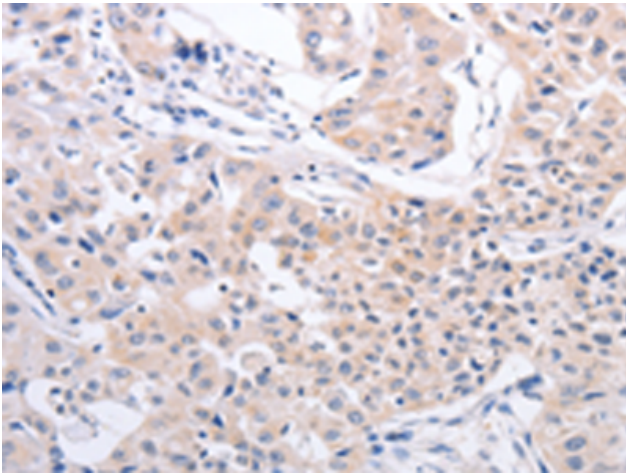
**Purification:** Antigen affinity purification

**Species Reactivity:** Human, Mouse, Rat

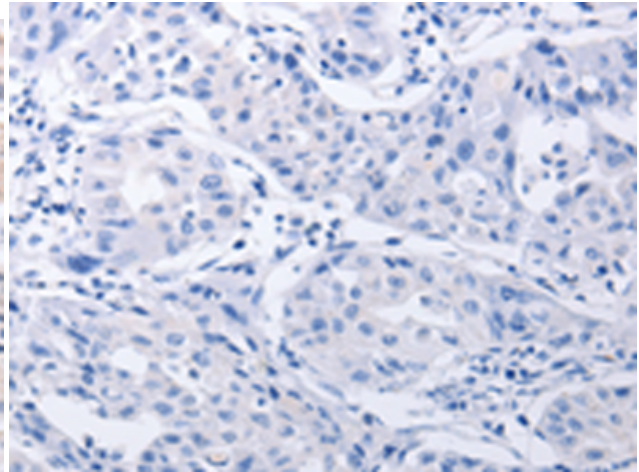
**Constituents:** PBS (without Mg<sup>2+</sup> and Ca<sup>2+</sup>), pH 7.4, 150 mM NaCl, 0.05% Sodium Azide and 40% glycerol

**Research Areas:** Signal Transduction

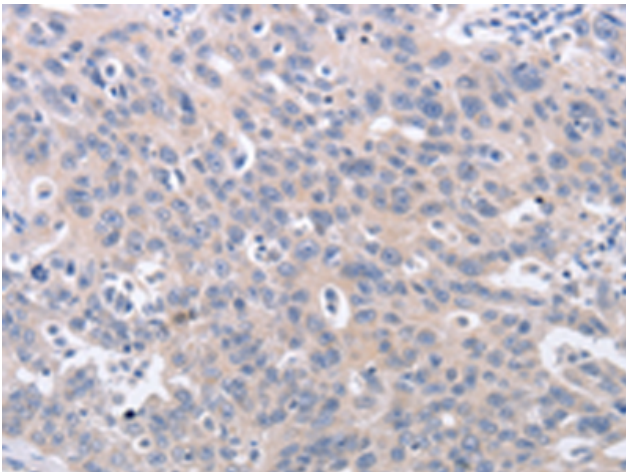
**Storage & Shipping:** Store at -20°C. Avoid repeated freezing and thawing



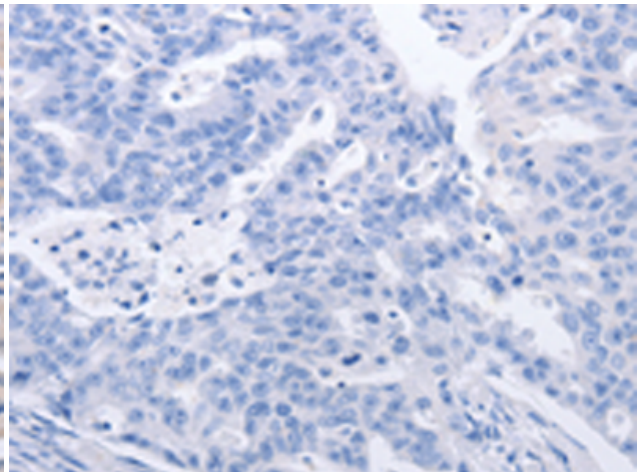
Immunohistochemistry analysis of paraffin embedded Human lung cancer tissue using 216739 (PFN4 Antibody) at a dilution of 1/20 (Cytoplasm).



In comparison with the IHC on the left, the same paraffin-embedded Human lung cancer tissue is first treated with the fusion protein and then with 216739 (Anti-PFN4 Antibody) at dilution 1/20.



The image on the left is immunohistochemistry of paraffin-embedded Human ovarian cancer tissue using 216739 (Anti-PFN4 Antibody) at a dilution of 1/20.



In comparison with the IHC on the left, the same paraffin-embedded Human ovarian cancer tissue is first treated with fusion protein and then with D221147 (Anti-PFN4 Antibody) at dilution 1/20.