

## PFKP RABBIT MAB

**Cat.#:** N262704

**Product Name:** Anti-PFKP Rabbit Monoclonal Antibody

**Synonyms:** PFKP; PFKF; 6-phosphofructokinase type C; 6-phosphofructokinase; platelet type; Phosphofructo-1-kinase isozyme C; PFK-C; Phosphofructokinase 1; Phosphohexokinase

**UNIPROT ID:** Q01813

**Background:** Catalyzes the phosphorylation of D-fructose 6-phosphate to fructose 1,6-bisphosphate by ATP, the first committing step of glycolysis. Miscellaneous In human PFK exists as a system of 3 types of subunits, PFKM (muscle), PFKL (liver) and PFKP (platelet) isoenzymes.

**Immunogen:** Recombinant protein of human PFKP

**Applications:** WB, ICC/IF, IP

**Recommended Dilutions:** WB: 1/500-1/1000 IF: 1/50-1/200 IP: 1/20

**Host Species:** Rabbit

**Clonality:** Rabbit Monoclonal

**Clone ID:** R05-4H9

**MW:** Calculated MW: 86 kDa; Observed MW: 86 kDa

**Isotype:** IgG

**Purification:** Affinity Purified

**Species Reactivity:** Human, Mouse, Rat

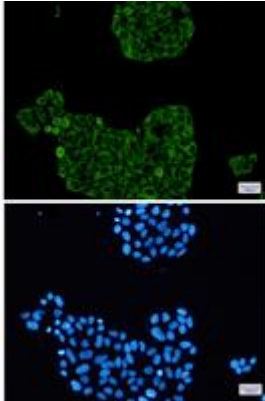
**Conjugation:** Unconjugated

**Modification:** Unmodified

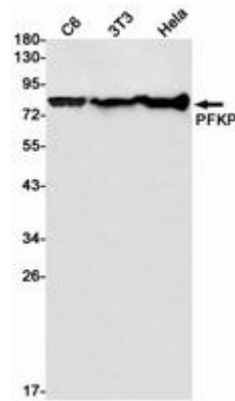
**Constituents:** PBS (without Mg<sup>2+</sup> and Ca<sup>2+</sup>), pH 7.3 containing 50% glycerol, 0.5% BSA and 0.02% sodium azide

**Research Areas:** Signal Transduction

**Storage & Shipping:** Store at -20°C. Avoid repeated freezing and thawing



Immunocytochemistry analysis of PFKP (green) in HeLa using PFKP antibody, and DAPI (blue)



Western blot analysis of PFKP in C6, 3T3, HeLa lysates using PFKP antibody.