

## PFDN2 RABBIT PAB

**Cat.#:** S218974

**Product Name:** Anti-PFDN2 Rabbit Polyclonal Antibody

**Synonyms:** PFD2

**UNIPROT ID:** Q9UHV9 (Gene Accession - BC012464 )

**Background:** This gene encodes a member of the prefoldin beta subunit family. The encoded protein is one of six subunits of prefoldin, a molecular chaperone complex that binds and stabilizes newly synthesized polypeptides, thereby allowing them to fold correctly. The complex consisting of two alpha and four beta subunits, forms a double beta barrel assembly with six protruding coiled-coils.

**Immunogen:** Fusion protein of human PFDN2

**Applications:** ELISA, IHC

**Recommended Dilutions:** IHC: 25-100; ELISA: 5000-10000

**Host Species:** Rabbit

**Clonality:** Rabbit Polyclonal

**Isotype:** Immunogen-specific rabbit IgG

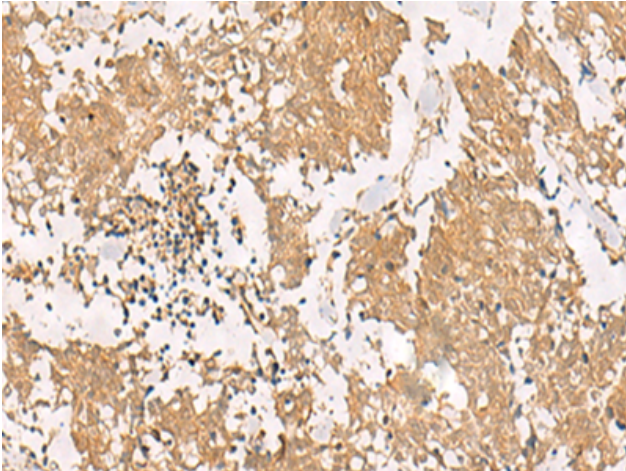
**Purification:** Antigen affinity purification

**Species Reactivity:** Human, Mouse, Rat

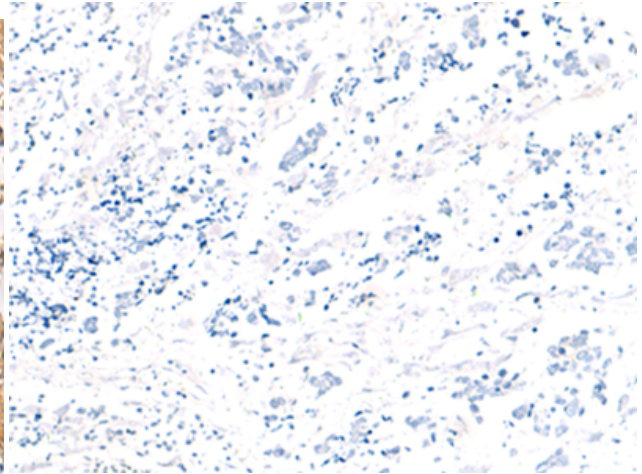
**Constituents:** PBS (without Mg<sup>2+</sup> and Ca<sup>2+</sup>), pH 7.4, 150 mM NaCl, 0.05% Sodium Azide and 40% glycerol

**Research Areas:** Signal Transduction

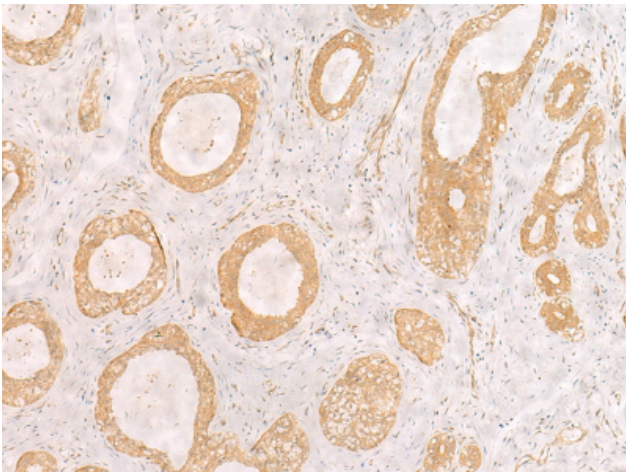
**Storage & Shipping:** Store at -20°C. Avoid repeated freezing and thawing



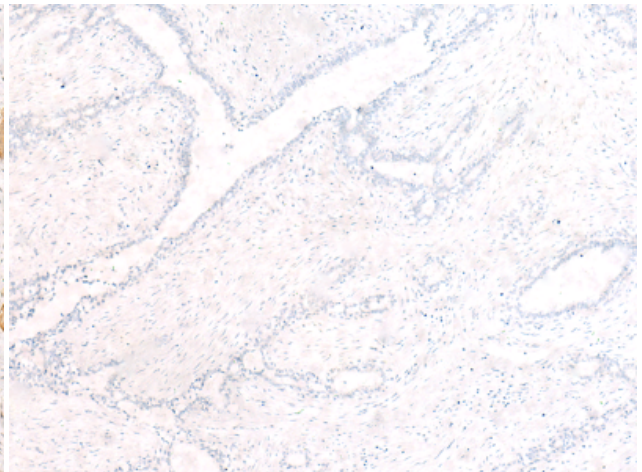
Immunohistochemistry analysis of paraffin embedded Human lung cancer tissue using 218974(PFDN2 Antibody) at a dilution of 1/25(Cytoplasm and Nucleus).



In comparison with the IHC on the left, the same paraffin-embedded Human lung cancer tissue is first treated with the fusion protein and then with 218974(Anti-PFDN2 Antibody) at dilution 1/25.



The image on the left is immunohistochemistry of paraffin-embedded Human breast cancer tissue using 218974(Anti-PFDN2 Antibody) at a dilution of 1/25.



In comparison with the IHC on the left, the same paraffin-embedded Human breast cancer tissue is first treated with fusion protein and then with D225591(Anti-PFDN2 Antibody) at dilution 1/25.