

PEN2 RABBIT MAB

Cat.#: N263486

Product Name: Anti-PEN2 Rabbit Monoclonal Antibody

Synonyms: PEN 2; PSEN2; psenen

UNIPROT ID: Q9NZ42

Background: Essential subunit of the gamma-secretase complex, an endoprotease complex that catalyzes the intramembrane cleavage of integral membrane proteins such as Notch receptors and APP (beta-amyloid precursor protein).

Immunogen: A synthetic peptide of human PEN2

Applications: WB,IHC-F,IHC-P,ICC/IF

Recommended Dilutions: WB: 1/500-1/1000 IHC: 1/50-1/100 IF: 1/50-1/200

Host Species: Rabbit

Clonality: Rabbit Monoclonal

Clone ID: R08-5F0

MW: Calculated MW: 12 kDa; Observed MW: 12 kDa

Isotype: IgG

Purification: Affinity Purified

Species Reactivity: Human,Mouse,Rat

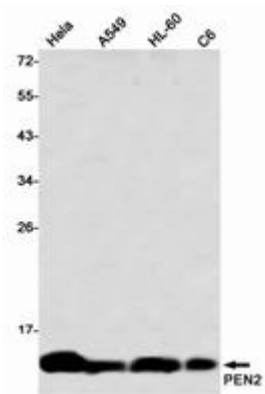
Conjugation: Unconjugated

Modification: Unmodified

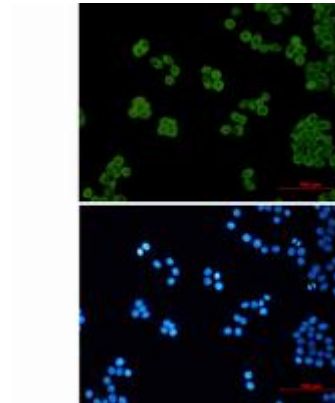
Constituents: PBS (without Mg²⁺ and Ca²⁺), pH 7.3 containing 50% glycerol, 0.5% BSA and 0.02% sodium azide

Research Areas: Neuroscience,Alzheimer's disease

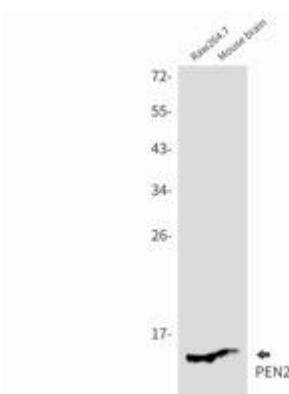
Storage & Shipping: Store at -20°C. Avoid repeated freezing and thawing



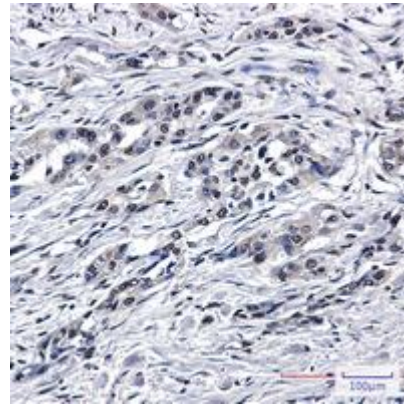
Western blot analysis of PEN2 in HeLa, A549, HL-60, C6 lysates using PEN2 antibody



Immunocytochemistry analysis of PEN2 (green) in HeLa using PEN2 antibody, and DAPI (blue).



Western blot analysis of PEN2 in Raw264.7, mouse brain lysates using PEN2 antibody.



Immunohistochemistry analysis of paraffin-embedded Human lung cancer using PEN2 antibody. High-pressure and temperature Sodium Citrate pH 6.0 was used for antigen retrieval.