

PECAM1 RABBIT PAB

Cat.#: S219976

Product Name: Anti-PECAM1 Rabbit Polyclonal Antibody

Synonyms: CD31, PECA1, GPIIA', PECAM-1, endoCAM, CD31/EndoCAM

UNIPROT ID: P16284 (Gene Accession - NP_000433)

Background: The protein encoded by this gene is found on the surface of platelets, monocytes, neutrophils, and some types of T-cells, and makes up a large portion of endothelial cell intercellular junctions. The encoded protein is a member of the immunoglobulin superfamily and is likely involved in leukocyte migration, angiogenesis, and integrin activation.

Immunogen: Synthetic peptide of human PECAM1

Applications: ELISA, IHC

Recommended Dilutions: IHC: 25-100; ELISA: 1000-5000

Host Species: Rabbit

Clonality: Rabbit Polyclonal

Isotype: Immunogen-specific rabbit IgG

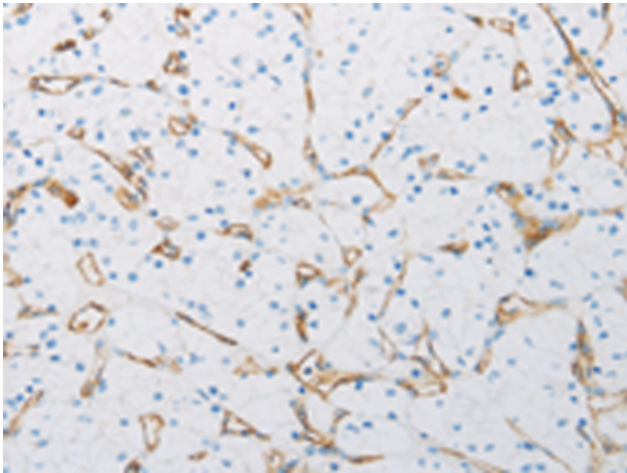
Purification: Antigen affinity purification

Species Reactivity: Human, Mouse

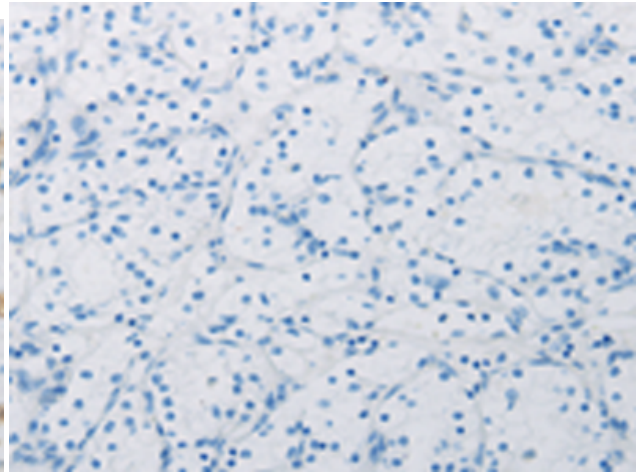
Constituents: PBS (without Mg²⁺ and Ca²⁺), pH 7.4, 150 mM NaCl, 0.05% Sodium Azide and 40% glycerol

Research Areas: Signal Transduction, Cancer, Cardiovascular, Stem Cells

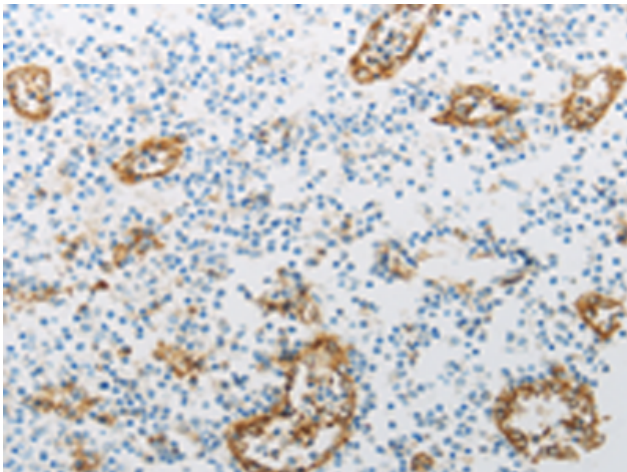
Storage & Shipping: Store at -20°C. Avoid repeated freezing and thawing



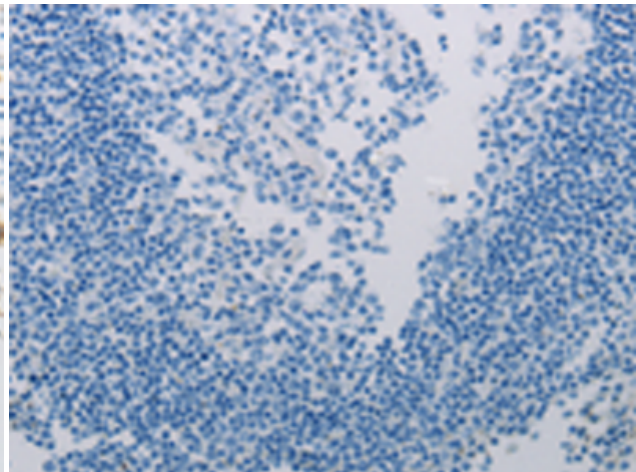
Immunohistochemistry analysis of paraffin embedded Human renal cancer tissue using 219976 (Anti-PECAM1 Antibody) at a dilution of 1/25 (Cell membrane, Cell junction).



In comparison with the IHC on the left, the same paraffin-embedded Human renal cancer tissue is first treated with the synthetic peptide and then with 219976 (Anti-PECAM1 Antibody) at dilution 1/25.



The image on the left is immunohistochemistry of paraffin-embedded Human tonsil tissue using 219976 (Anti-PECAM1 Antibody) at a dilution of 1/25.



In comparison with the IHC on the left, the same paraffin-embedded Human tonsil tissue is first treated with synthetic peptide and then with 219976 (Anti-PECAM1 Antibody) at dilution 1/25.