

## PDS5B RABBIT PAB

**Cat.#:** S210951

**Product Name:** Anti-PDS5B Rabbit Polyclonal Antibody

**Synonyms:** AS3; APRIN; CG008

**UNIPROT ID:** Q9NTI5 (Gene Accession - BC039256 )

**Background:** This gene encodes a protein that interacts with the conserved protein complex termed cohesin. The cohesin complex holds together sister chromatids and facilitates accurate chromosome segregation during mitosis and meiosis. This protein is also a negative regulator of cell proliferation and may be a tumor-suppressor gene.

**Immunogen:** Fusion protein of human PDS5B

**Applications:** ELISA, WB, IHC

**Recommended Dilutions:** IHC: 25-50;WB: 500-2000;ELISA: 5000-10000

**Host Species:** Rabbit

**Clonality:** Rabbit Polyclonal

**Isotype:** Immunogen-specific rabbit IgG

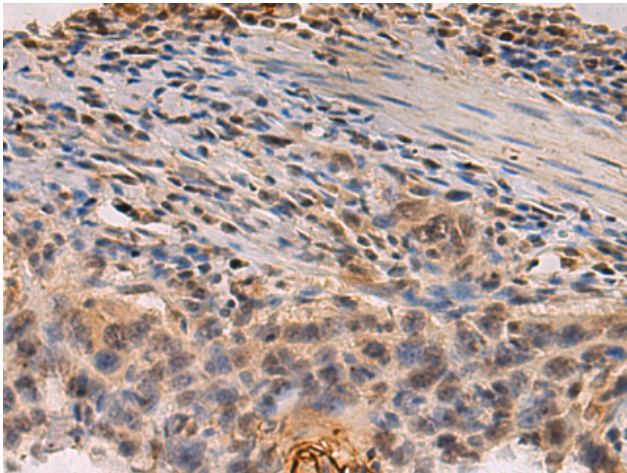
**Purification:** Antigen affinity purification

**Species Reactivity:** Human, Mouse, Rat

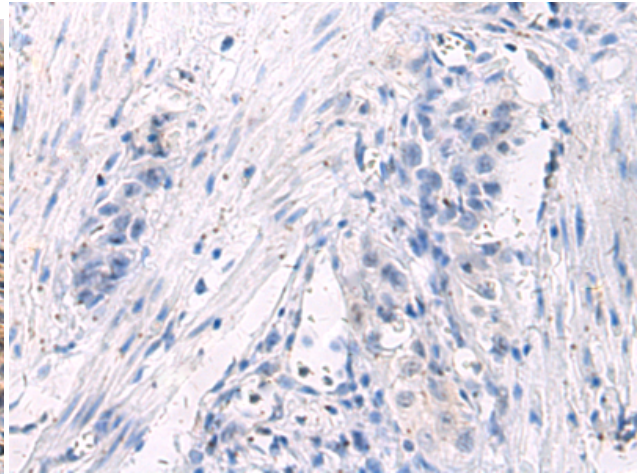
**Constituents:** PBS (without Mg<sup>2+</sup> and Ca<sup>2+</sup>), pH 7.4, 150 mM NaCl, 0.05% Sodium Azide and 40% glycerol

**Research Areas:** Cancer

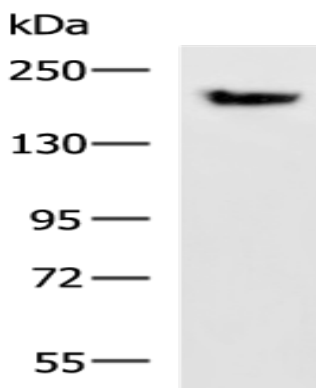
**Storage & Shipping:** Store at -20°C. Avoid repeated freezing and thawing



Immunohistochemistry analysis of paraffin embedded Human esophagus cancer tissue using 210951(PDS5B Antibody) at a dilution of 1/35(Nucleus and Cytoplasm).



In comparison with the IHC on the left, the same paraffin-embedded Human esophagus cancer tissue is first treated with the fusion protein and then with 210951(Anti-PDS5B Antibody) at dilution 1/35.



Gel: 6%SDS-PAGE, Lysate: 40  $\mu$ g;  
Lane: Mouse brain tissue lysate;  
Primary antibody: 210951(PDS5B Antibody) at dilution 1/800;  
Secondary antibody: HRP-conjugated Goat anti rabbit IgG at 1/5000 dilution;  
Exposure time: 1 minute