

PDS5A RABBIT PAB

Cat.#: S212758

Product Name: Anti-PDS5A Rabbit Polyclonal Antibody

Synonyms: PIG54; SCC112; SCC-112

UNIPROT ID: Q29RF7 (Gene Accession - BC009650)

Background: The protein encoded by this gene binds to the cohesin complex and associates with chromatin through most of the cell cycle. The encoded protein may play a role in regulating sister chromatid cohesion during mitosis. Two transcript variants encoding different isoforms have been found for this gene.

Immunogen: Fusion protein of human PDS5A

Applications: ELISA, IHC

Recommended Dilutions: IHC: 50-200; ELISA: 5000-10000

Host Species: Rabbit

Clonality: Rabbit Polyclonal

Isotype: Immunogen-specific rabbit IgG

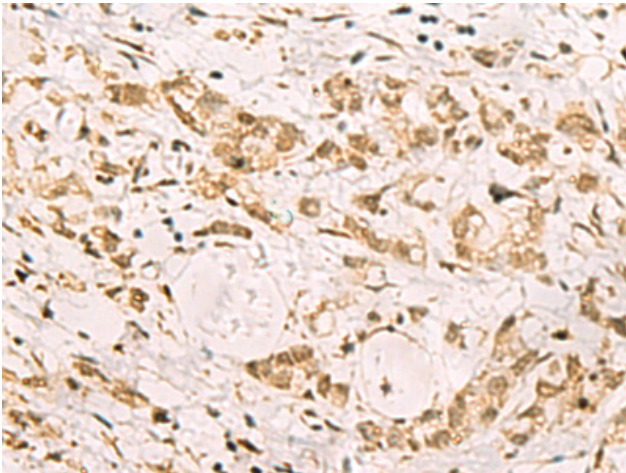
Purification: Antigen affinity purification

Species Reactivity: Human, Mouse, Rat

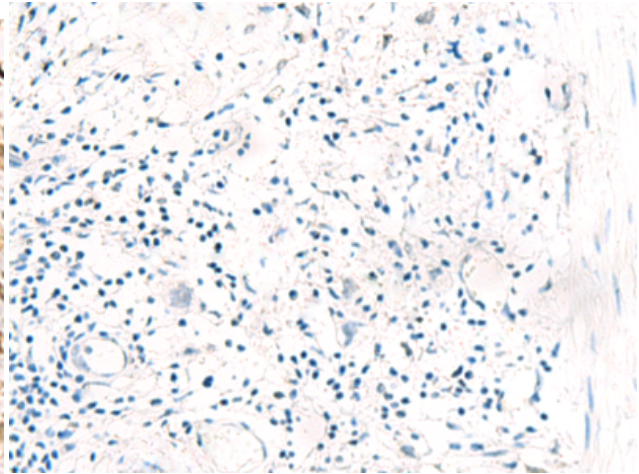
Constituents: PBS (without Mg²⁺ and Ca²⁺), pH 7.4, 150 mM NaCl, 0.05% Sodium Azide and 40% glycerol

Research Areas: Epigenetics and Nuclear Signaling, Cancer

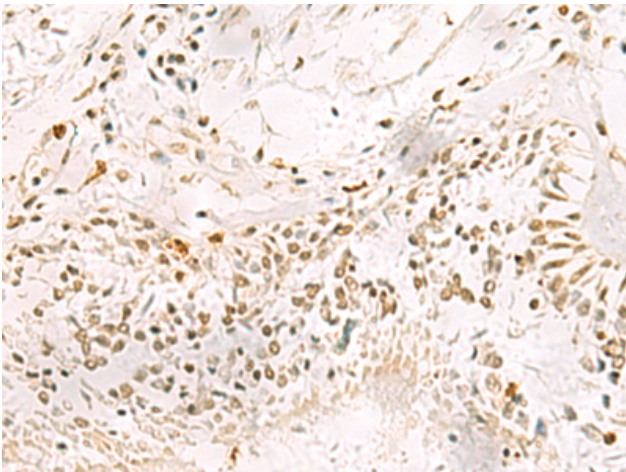
Storage & Shipping: Store at -20°C. Avoid repeated freezing and thawing



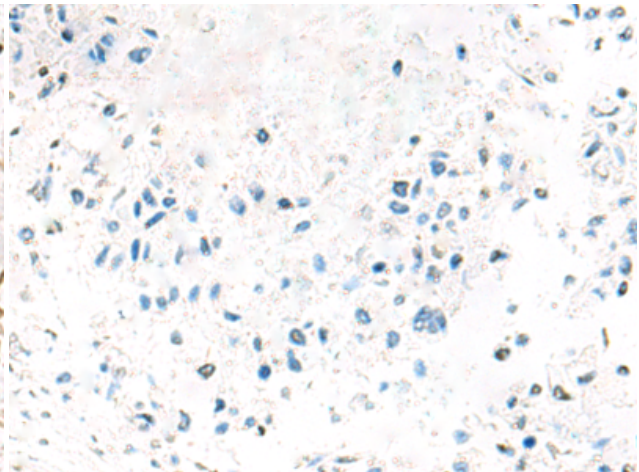
Immunohistochemistry analysis of paraffin embedded Human gastric cancer tissue using 212758 (PDS5A Antibody) at a dilution of 1/90 (Nucleus).



In comparison with the IHC on the left, the same paraffin-embedded Human gastric cancer tissue is first treated with the fusion protein and then with 212758 (Anti-PDS5A Antibody) at dilution 1/90.



The image on the left is immunohistochemistry of paraffin-embedded Human lung cancer tissue using 212758 (Anti-PDS5A Antibody) at a dilution of 1/90.



In comparison with the IHC on the left, the same paraffin-embedded Human lung cancer tissue is first treated with fusion protein and then with D125752 (Anti-PDS5A Antibody) at dilution 1/90.