

## PDRG1 RABBIT PAB

**Cat.#:** S218802

**Product Name:** Anti-PDRG1 Rabbit Polyclonal Antibody

**Synonyms:** PDRG; C20orf126

**UNIPROT ID:** Q9NUG6 (Gene Accession - BC009334 )

**Background:** May play a role in chaperone-mediated protein folding.

**Immunogen:** Fusion protein of human PDRG1

**Applications:** ELISA, IHC

**Recommended Dilutions:** IHC: 50-300; ELISA: 5000-10000

**Host Species:** Rabbit

**Clonality:** Rabbit Polyclonal

**Isotype:** Immunogen-specific rabbit IgG

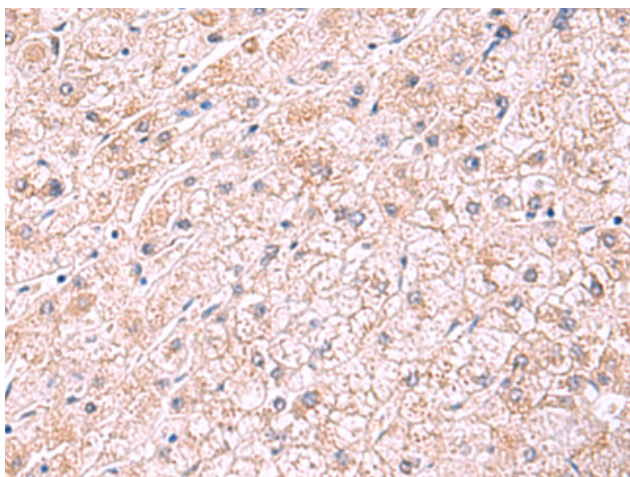
**Purification:** Antigen affinity purification

**Species Reactivity:** Human, Mouse, Rat

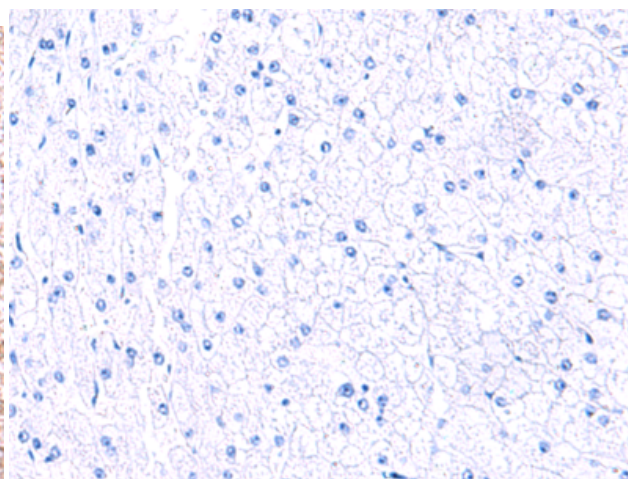
**Constituents:** PBS (without Mg<sup>2+</sup> and Ca<sup>2+</sup>), pH 7.4, 150 mM NaCl, 0.05% Sodium Azide and 40% glycerol

**Research Areas:** Signal Transduction, Epigenetics and Nuclear Signaling

**Storage & Shipping:** Store at -20°C. Avoid repeated freezing and thawing



Immunohistochemistry analysis of paraffin embedded Human liver cancer tissue using 218802(PDRG1 Antibody) at a dilution of 1/75(Cytoplasm).



In comparison with the IHC on the left, the same paraffin-embedded Human liver cancer tissue is first treated with the fusion protein and then with 218802(Anti-PDRG1 Antibody) at dilution 1/75.