

## PDLIM5 RABBIT PAB

**Cat.#:** S217680

**Product Name:** Anti-PDLIM5 Rabbit Polyclonal Antibody

**Synonyms:** L9; ENH; LIM; ENH1

**UNIPROT ID:** Q96HC4 (Gene Accession - BC008741 )

**Background:** This gene encodes a member of a family of proteins that possess a 100-amino acid PDZ domain at the N terminus and one to three LIM domains at the C-terminus. This family member functions as a scaffold protein that tethers protein kinases to the Z-disk in striated muscles. It is thought to function in cardiomyocyte expansion and in restraining postsynaptic growth of excitatory synapses. Alternative splicing of this gene results in multiple transcript variants. [provided by RefSeq, Jan 2012]

**Immunogen:** Fusion protein of human PDLIM5

**Applications:** ELISA, IHC

**Recommended Dilutions:** IHC: 100-300; ELISA: 5000-10000

**Host Species:** Rabbit

**Clonality:** Rabbit Polyclonal

**Isotype:** Immunogen-specific rabbit IgG

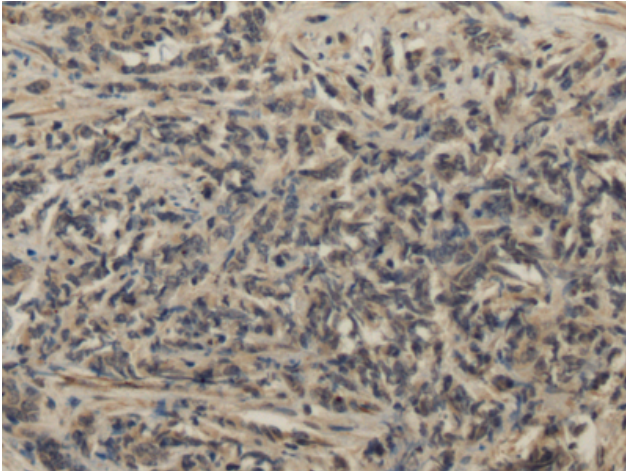
**Purification:** Antigen affinity purification

**Species Reactivity:** Human, Mouse, Rat

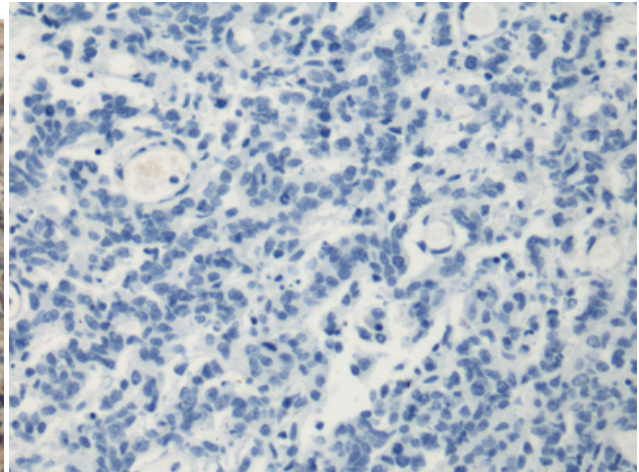
**Constituents:** PBS (without Mg<sup>2+</sup> and Ca<sup>2+</sup>), pH 7.4, 150 mM NaCl, 0.05% Sodium Azide and 40% glycerol

**Research Areas:** Signal Transduction, Neuroscience

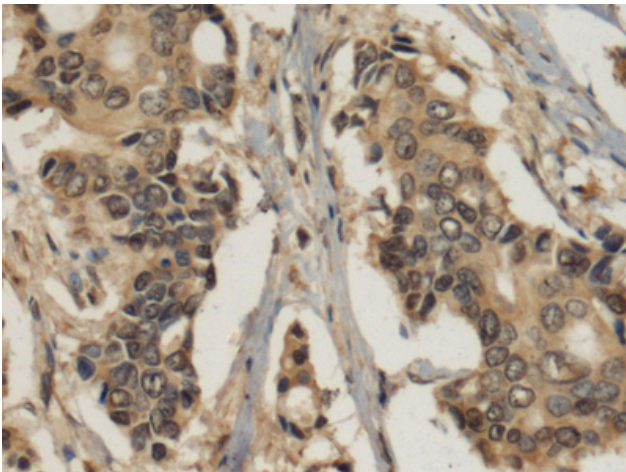
**Storage & Shipping:** Store at -20°C. Avoid repeated freezing and thawing



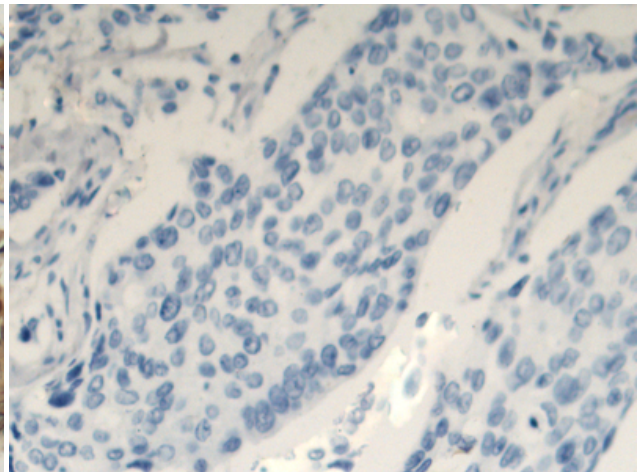
Immunohistochemistry analysis of paraffin embedded Human prostate cancer tissue using 217680 (PDLIM5 Antibody) at a dilution of 1/120 (Cytoplasm).



In comparison with the IHC on the left, the same paraffin-embedded Human prostate cancer tissue is first treated with the fusion protein and then with 217680 (Anti-PDLIM5 Antibody) at dilution 1/120.



The image on the left is immunohistochemistry of paraffin-embedded Human breast cancer tissue using 217680 (Anti-PDLIM5 Antibody) at a dilution of 1/120.



In comparison with the IHC on the left, the same paraffin-embedded Human breast cancer tissue is first treated with fusion protein and then with D222856 (Anti-PDLIM5 Antibody) at dilution 1/120.