

PDLIM4 RABBIT PAB

Cat.#: S217763

Product Name: Anti-PDLIM4 Rabbit Polyclonal Antibody

Synonyms: RIL

UNIPROT ID: P50479 (Gene Accession - BC016765)

Background: This gene encodes a protein which may be involved in bone development. Mutations in this gene are associated with susceptibility to osteoporosis.

Immunogen: Fusion protein of human PDLIM4

Applications: ELISA, WB, IHC

Recommended Dilutions: IHC: 25-100;WB: 500-2000;ELISA: 2000-5000

Host Species: Rabbit

Clonality: Rabbit Polyclonal

Isotype: Immunogen-specific rabbit IgG

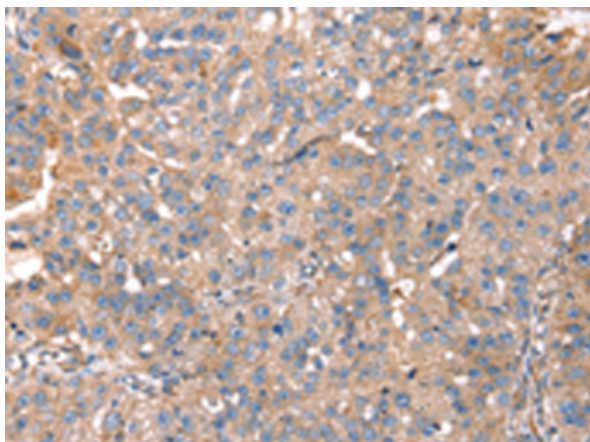
Purification: Antigen affinity purification

Species Reactivity: Human, Mouse, Rat

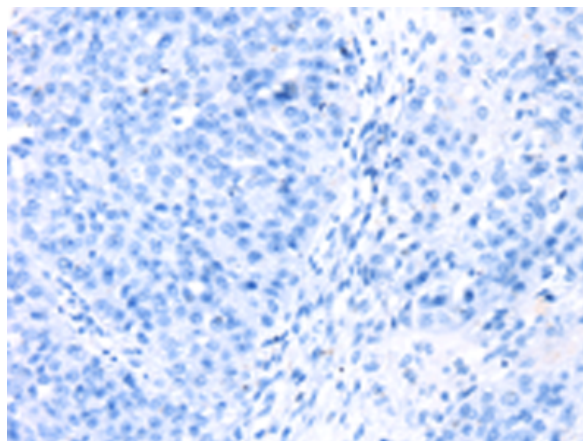
Constituents: PBS (without Mg²⁺ and Ca²⁺), pH 7.4, 150 mM NaCl, 0.05% Sodium Azide and 40% glycerol

Research Areas: Epigenetics and Nuclear Signaling, Cancer

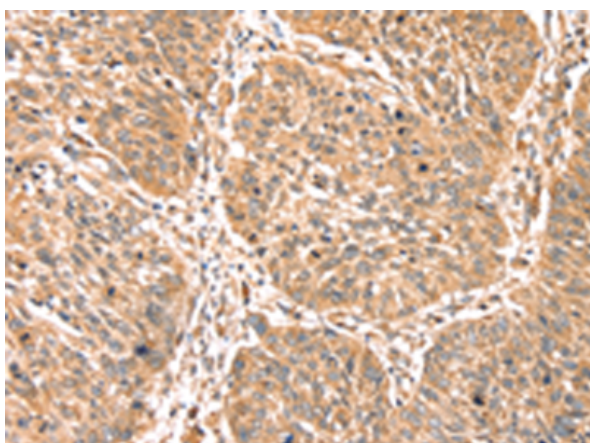
Storage & Shipping: Store at -20°C. Avoid repeated freezing and thawing



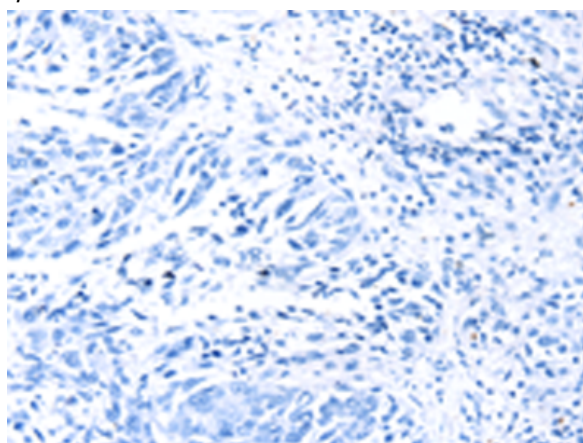
Immunohistochemistry analysis of paraffin embedded Human breast cancer tissue using 217763(PDLIM4 Antibody) at a dilution of 1/40(Cytoplasm).



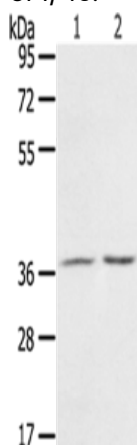
In comparison with the IHC on the left, the same paraffin-embedded Human breast cancer tissue is first treated with the fusion protein and then with 217763(Anti-PDLIM4 Antibody) at dilution 1/40.



The image on the left is immunohistochemistry of paraffin-embedded Human lung cancer tissue using 217763(Anti-PDLIM4 Antibody) at a dilution of 1/40.



In comparison with the IHC on the left, the same paraffin-embedded Human lung cancer tissue is first treated with fusion protein and then with D223025(Anti-PDLIM4 Antibody) at dilution 1/40.



Gel: 8%SDS-PAGE, Lysate: 40 µg;
Lane 1-2: Mouse stomach tissue, A431 cells;
Primary antibody: 217763(PDLIM4 Antibody) at dilution 1/800;
Secondary antibody: Goat anti rabbit IgG at 1/8000 dilution;
Exposure time: 3 seconds



Product Description

Pioneering GTPase and Oncogene Product Development since 2010
