

PDLIM3 RABBIT PAB

Cat.#: S216980

Product Name: Anti-PDLIM3 Rabbit Polyclonal Antibody

Synonyms: ALP

UNIPROT ID: Q53GG5 (Gene Accession - BC001017)

Background: The protein encoded by this gene contains a PDZ domain and a LIM domain, indicating that it may be involved in cytoskeletal assembly. In support of this, the encoded protein has been shown to bind the spectrin-like repeats of alpha-actinin-2 and to colocalize with alpha-actinin-2 at the Z lines of skeletal muscle. Alternatively spliced transcript variants encoding multiple isoforms have been observed for this gene. Aberrant alternative splicing of this gene may play a role in myotonic dystrophy.

Immunogen: Fusion protein of human PDLIM3

Applications: ELISA, IHC

Recommended Dilutions: IHC: 50-100; ELISA: 5000-10000

Host Species: Rabbit

Clonality: Rabbit Polyclonal

Isotype: Immunogen-specific rabbit IgG

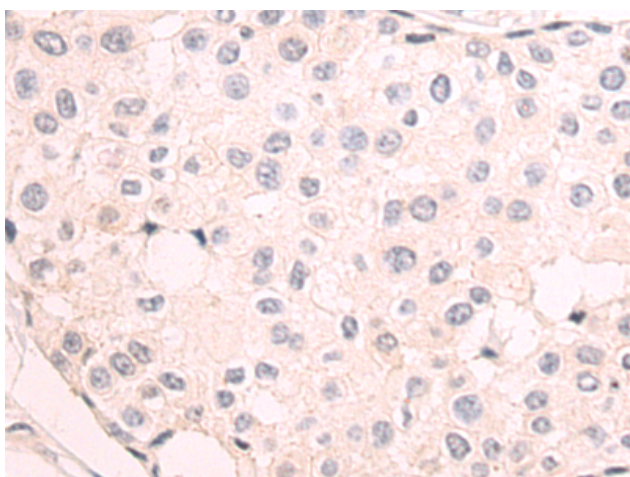
Purification: Antigen affinity purification

Species Reactivity: Human, Mouse

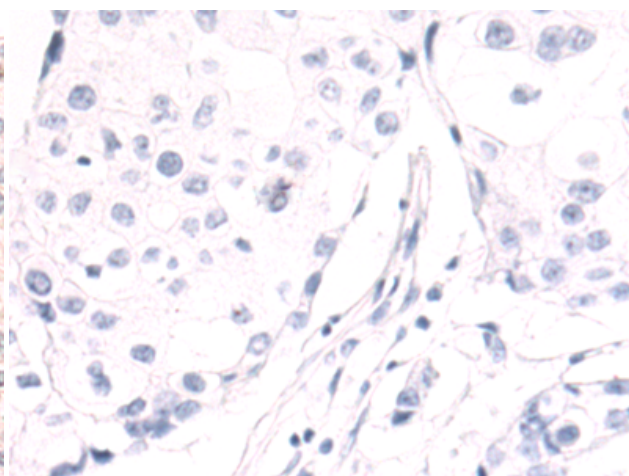
Constituents: PBS (without Mg²⁺ and Ca²⁺), pH 7.4, 150 mM NaCl, 0.05% Sodium Azide and 40% glycerol

Research Areas: Signal Transduction

Storage & Shipping: Store at -20°C. Avoid repeated freezing and thawing



Immunohistochemistry analysis of paraffin embedded Human breast cancer tissue using 216980(PDLIM3 Antibody) at a dilution of 1/70(Cytoplasm).



In comparison with the IHC on the left, the same paraffin-embedded Human breast cancer tissue is first treated with the fusion protein and then with 216980(Anti-PDLIM3 Antibody) at dilution 1/70.