

PDGFD RABBIT PAB

Cat.#: S217676

Product Name: Anti-PDGFD Rabbit Polyclonal Antibody

Synonyms: IEGF; SCDGFB; MSTP036; SCDGF-B

UNIPROT ID: Q9GZP0 (Gene Accession - BC030645)

Background: The protein encoded by this gene is a member of the platelet-derived growth factor family. The four members of this family are mitogenic factors for cells of mesenchymal origin and are characterized by a core motif of eight cysteines, seven of which are found in this factor. This gene product only forms homodimers and, therefore, does not dimerize with the other three family members. It differs from alpha and beta members of this family in having an unusual N-terminal domain, the CUB domain. Two splice variants have been identified for this gene. [provided by RefSeq, Jul 2008]

Immunogen: Fusion protein of human PDGFD

Applications: ELISA, IHC

Recommended Dilutions: IHC: 100-200; ELISA: 5000-10000

Host Species: Rabbit

Clonality: Rabbit Polyclonal

Isotype: Immunogen-specific rabbit IgG

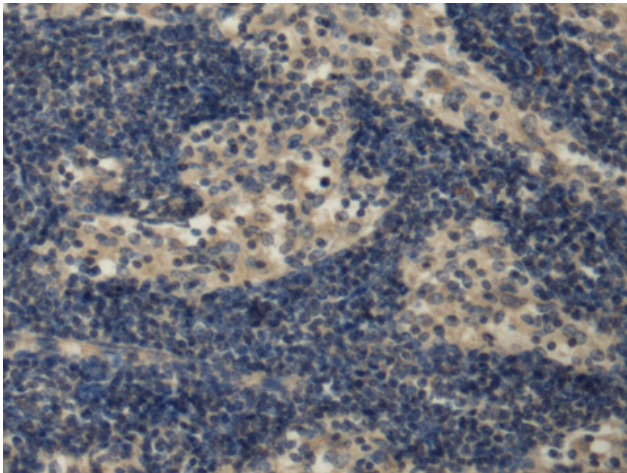
Purification: Antigen affinity purification

Species Reactivity: Human, Mouse, Rat

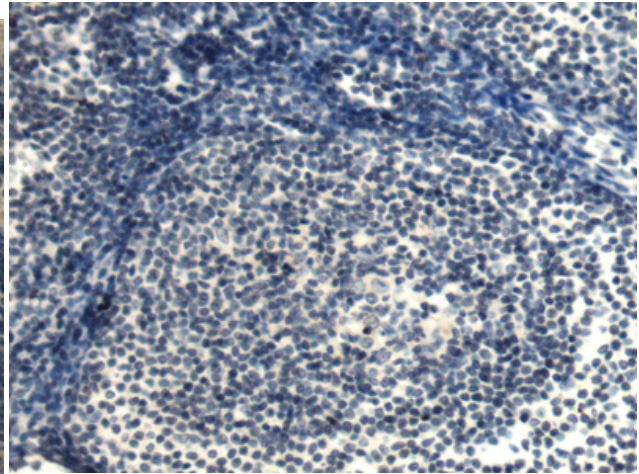
Constituents: PBS (without Mg²⁺ and Ca²⁺), pH 7.4, 150 mM NaCl, 0.05% Sodium Azide and 40% glycerol

Research Areas: Signal Transduction, Cancer, Neuroscience, Cardiovascular

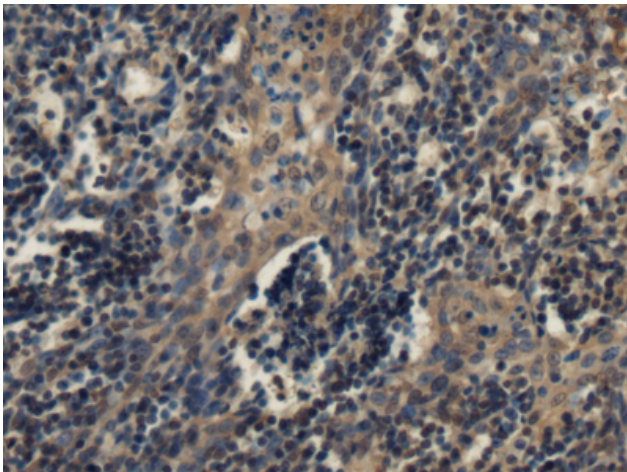
Storage & Shipping: Store at -20°C. Avoid repeated freezing and thawing



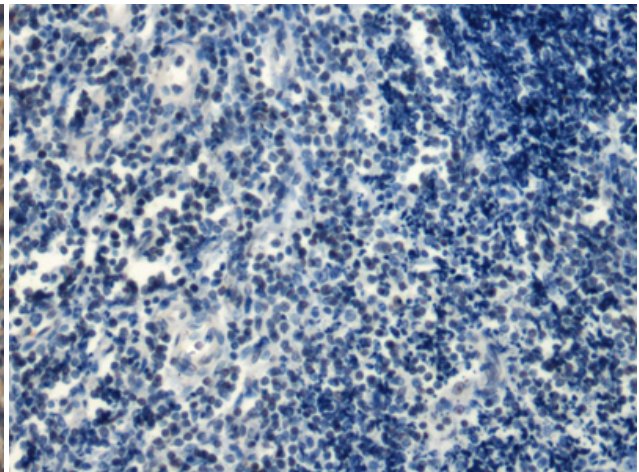
Immunohistochemistry analysis of paraffin embedded Human esophagus cancer tissue using 217676 (PDGFD Antibody) at a dilution of 1/120 (Secreted).



In comparison with the IHC on the left, the same paraffin-embedded Human esophagus cancer tissue is first treated with the fusion protein and then with 217676 (Anti-PDGFD Antibody) at dilution 1/120.



The image on the left is immunohistochemistry of paraffin-embedded Human tonsil tissue using 217676 (Anti-PDGFD Antibody) at a dilution of 1/120.



In comparison with the IHC on the left, the same paraffin-embedded Human tonsil tissue is first treated with fusion protein and then with D222850 (Anti-PDGFD Antibody) at dilution 1/120.