

PDGFB RABBIT PAB

Cat.#: S212418

Product Name: Anti-PDGFB Rabbit Polyclonal Antibody

Synonyms: SIS; SSV; IBGC5; PDGF2; c-sis; PDGF-2

UNIPROT ID: P01127

Background: This gene encodes a member of the protein family comprised of both platelet-derived growth factors (PDGF) and vascular endothelial growth factors (VEGF). The encoded preproprotein is proteolytically processed to generate platelet-derived growth factor subunit B, which can homodimerize, or alternatively, heterodimerize with the related platelet-derived growth factor subunit A. These proteins bind and activate PDGF receptor tyrosine kinases, which play a role in a wide range of developmental processes. Mutations in this gene are associated with meningioma. Reciprocal translocations between chromosomes 22 and 17, at sites where this gene and that for collagen type 1, alpha 1 are located, are associated with dermatofibrosarcoma protuberans, a rare skin tumor. Alternative splicing results in multiple transcript variants.

Immunogen: Fusion protein of human PDGFB

Applications: ELISA, WB, IHC

Recommended Dilutions: IHC: 50-200;WB: 500-2000;ELISA: 5000-10000

Host Species: Rabbit

Clonality: Rabbit Polyclonal

Isotype: Immunogen-specific rabbit IgG

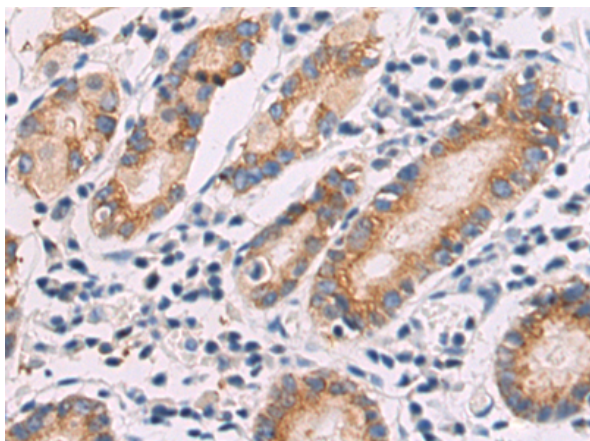
Purification: Antigen affinity purification

Species Reactivity: Human, Mouse, Rat

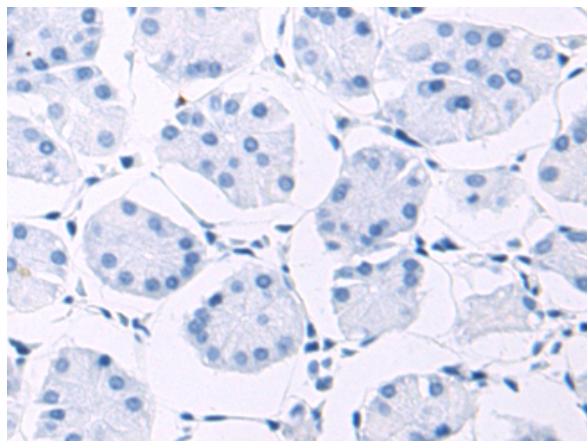
Constituents: PBS (without Mg²⁺ and Ca²⁺), pH 7.4, 150 mM NaCl, 0.05% Sodium Azide and 40% glycerol

Research Areas: Signal Transduction, Cancer, Cardiovascular, Metabolism, Developmental Biology

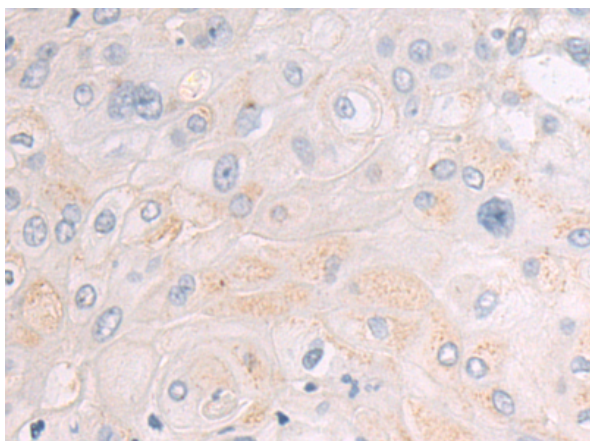
Storage & Shipping: Store at -20°C. Avoid repeated freezing and thawing



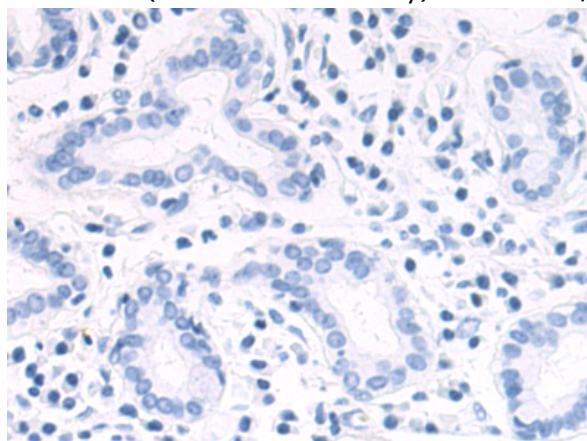
Immunohistochemistry analysis of paraffin embedded Human gastric cancer tissue using 212418 (PDGFB Antibody) at a dilution of 1/50 (Cytoplasm).



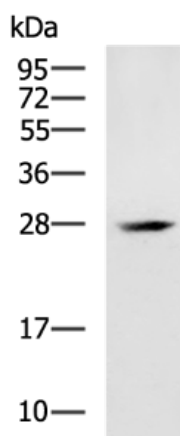
In comparison with the IHC on the left, the same paraffin-embedded Human gastric cancer tissue is first treated with the fusion protein and then with 212418 (Anti-PDGFB Antibody) at dilution 1/50.



The image on the left is immunohistochemistry of paraffin-embedded Human esophagus cancer tissue using 212418 (Anti-PDGFB Antibody) at a dilution of 1/50.



In comparison with the IHC on the left, the same paraffin-embedded Human esophagus cancer tissue is first treated with fusion protein and then with D125034 (Anti-PDGFB Antibody) at dilution 1/50.



Gel: 12%SDS-PAGE, Lysate: 40 µg;
Lane: HeLa cell lysate;
Primary antibody: 212418 (PDGFB Antibody) at dilution 1/600;
Secondary antibody: HRP-conjugated Goat anti rabbit IgG at 1/5000 dilution;
Exposure time: 5 minutes



Product Description

Pioneering GTPase and Oncogene Product Development since 2010
