

## PDE4D RABBIT PAB

**Cat.#:** S216721

**Product Name:** Anti-PDE4D Rabbit Polyclonal Antibody

**Synonyms:** DPDE3; PDE43; STRK1; ACRDYS2; HSPDE4D; PDE4DN2

**UNIPROT ID:** Q08499 (Gene Accession - BC008390 )

**Background:** This gene encodes one of four mammalian counterparts to the fruit fly 'dunce' gene. The encoded protein has 3',5'-cyclic-AMP phosphodiesterase activity and degrades cAMP, which acts as a signal transduction molecule in multiple cell types. This gene uses different promoters to generate multiple alternatively spliced transcript variants that encode functional proteins.

**Immunogen:** Fusion protein of human PDE4D

**Applications:** ELISA, WB, IHC

**Recommended Dilutions:** IHC: 25-100;WB: 500-2000;ELISA: 2000-5000

**Host Species:** Rabbit

**Clonality:** Rabbit Polyclonal

**Isotype:** Immunogen-specific rabbit IgG

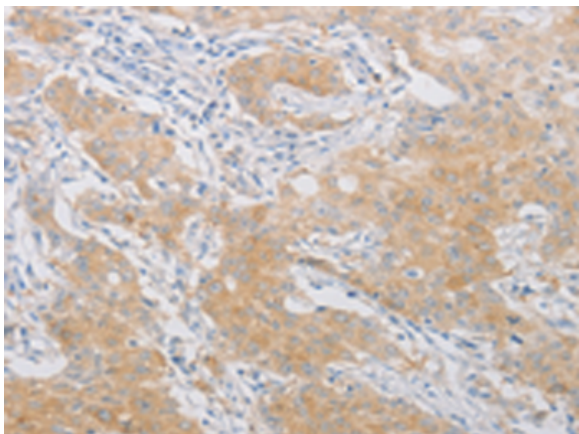
**Purification:** Antigen affinity purification

**Species Reactivity:** Human

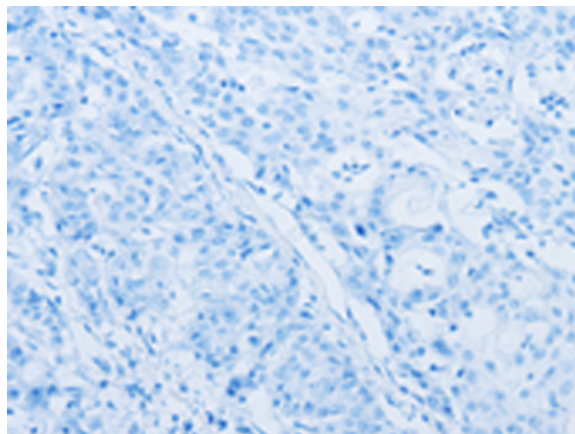
**Constituents:** PBS (without Mg<sup>2+</sup> and Ca<sup>2+</sup>), pH 7.4, 150 mM NaCl, 0.05% Sodium Azide and 40% glycerol

**Research Areas:** Signal Transduction

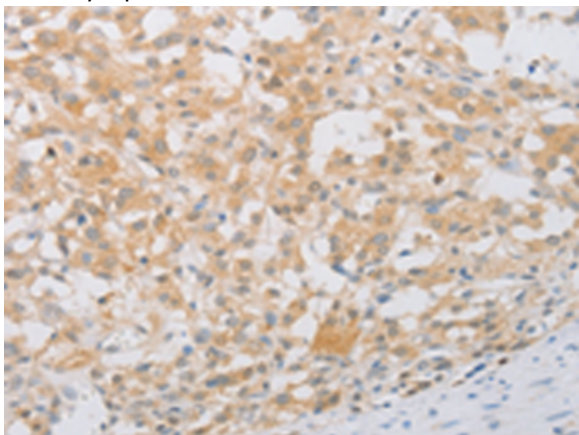
**Storage & Shipping:** Store at -20°C. Avoid repeated freezing and thawing



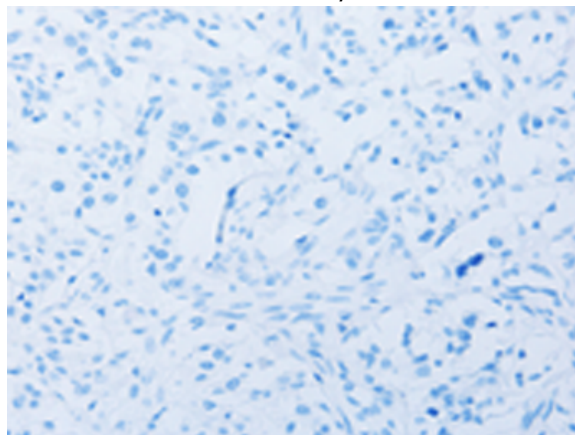
Immunohistochemistry analysis of paraffin embedded Human gastric cancer tissue using 216721(PDE4D Antibody) at a dilution of 1/20(Cytoplasm).



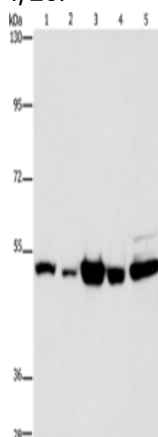
In comparison with the IHC on the left, the same paraffin-embedded Human gastric cancer tissue is first treated with the fusion protein and then with 216721(Anti-PDE4D Antibody) at dilution 1/20.



The image on the left is immunohistochemistry of paraffin-embedded Human thyroid cancer tissue using 216721(Anti-PDE4D Antibody) at a dilution of 1/20.



In comparison with the IHC on the left, the same paraffin-embedded Human thyroid cancer tissue is first treated with fusion protein and then with D221118(Anti-PDE4D Antibody) at dilution 1/20.



Gel: 8%SDS-PAGE, Lysate: 40 µg;  
 Lane 1-5: Human bladder carcinoma tissue,  
 Human brain malignant glioma tissue, A172 cells,  
 human fetal brain tissue, hela cells;  
 Primary antibody: 216721(PDE4D Antibody) at  
 dilution 1/450;  
 Secondary antibody: Goat anti rabbit IgG at 1/8000  
 dilution;  
 Exposure time: 10 seconds



# Product Description

Pioneering GTPase and Oncogene Product Development since 2010

---