

PDCL RABBIT PAB

Cat.#: S219314

Product Name: Anti-PDCL Rabbit Polyclonal Antibody

Synonyms: PhLP

UNIPROT ID: Q13371 (Gene Accession - BC017227)

Background: Phosducin-like protein is a putative modulator of heterotrimeric G proteins. The protein shares extensive amino acid sequence homology with phosducin, a phosphoprotein expressed in retina and pineal gland. Both phosducin-like protein and phosducin have been shown to regulate G-protein signaling by binding to the beta-gamma subunits of G proteins.

Immunogen: Fusion protein of human PDCL

Applications: ELISA, IHC

Recommended Dilutions: IHC: 25-50; ELISA: 5000-10000

Host Species: Rabbit

Clonality: Rabbit Polyclonal

Isotype: Immunogen-specific rabbit IgG

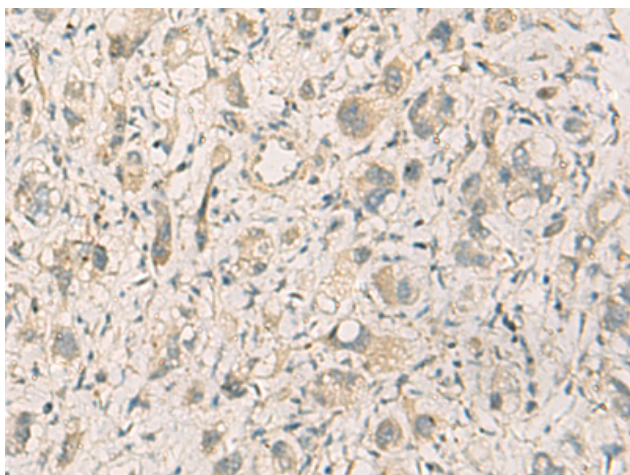
Purification: Antigen affinity purification

Species Reactivity: Human, Mouse, Rat

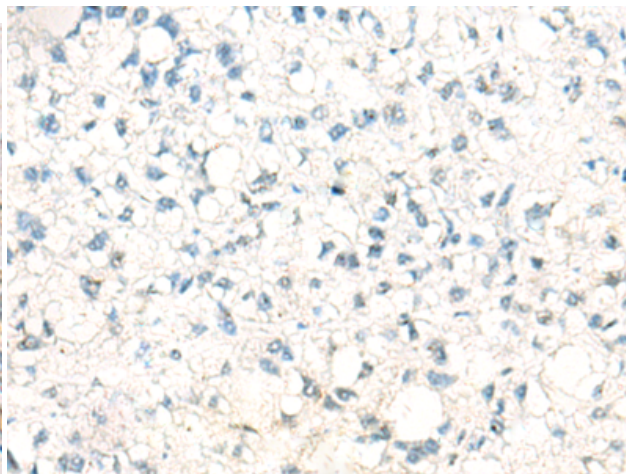
Constituents: PBS (without Mg²⁺ and Ca²⁺), pH 7.4, 150 mM NaCl, 0.05% Sodium Azide and 40% glycerol

Research Areas: Signal Transduction

Storage & Shipping: Store at -20°C. Avoid repeated freezing and thawing



Immunohistochemistry analysis of paraffin embedded Human liver cancer tissue using 219314(PDCL Antibody) at a dilution of 1/40(Cytoplasm).



In comparison with the IHC on the left, the same paraffin-embedded Human liver cancer tissue is first treated with the fusion protein and then with 219314(Anti-PDCL Antibody) at dilution 1/40.