

PDCD6IP RABBIT PAB

Cat.#: S220789

Product Name: Anti-PDCD6IP Rabbit Polyclonal Antibody

Synonyms: AIP1; ALIX; HP95; DRIP4

UNIPROT ID: Q8WUM4 (Gene Accession - NP_001155901)

Background: This gene encodes a protein that functions within the ESCRT pathway in the abscission stage of cytokinesis, in intraluminal endosomal vesicle formation, and in enveloped virus budding. Studies using mouse cells have shown that overexpression of this protein can block apoptosis. In addition, the product of this gene binds to the product of the PDCD6 gene, a protein required for apoptosis, in a calcium-dependent manner. This gene product also binds to endophilins, proteins that regulate membrane shape during endocytosis. Overexpression of this gene product and endophilins results in cytoplasmic vacuolization, which may be partly responsible for the protection against cell death. Several alternatively spliced transcript variants encoding different isoforms have been found for this gene. Related pseudogenes have been identified on chromosome 15.

Immunogen: Synthetic peptide of human PDCD6IP

Applications: ELISA, WB, IHC

Recommended Dilutions: IHC: 50-200;WB: 500-2000;ELISA: 5000-10000

Host Species: Rabbit

Clonality: Rabbit Polyclonal

Isotype: Immunogen-specific rabbit IgG

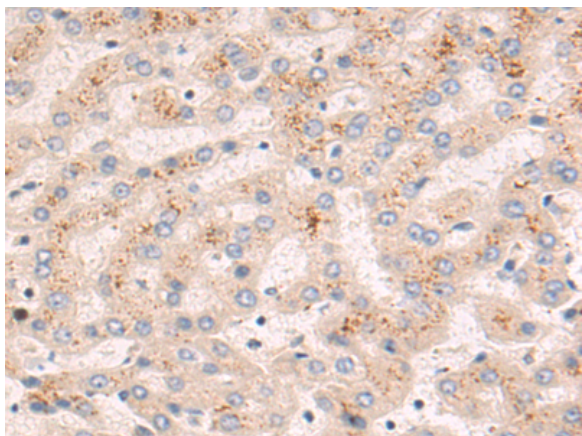
Purification: Antigen affinity purification

Species Reactivity: Human, Mouse, Rat

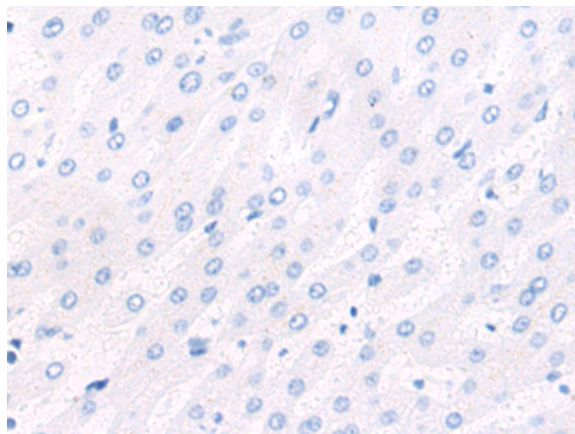
Constituents: PBS (without Mg²⁺ and Ca²⁺), pH 7.4, 150 mM NaCl, 0.05% Sodium Azide and 40% glycerol

Research Areas: Signal Transduction, Cancer

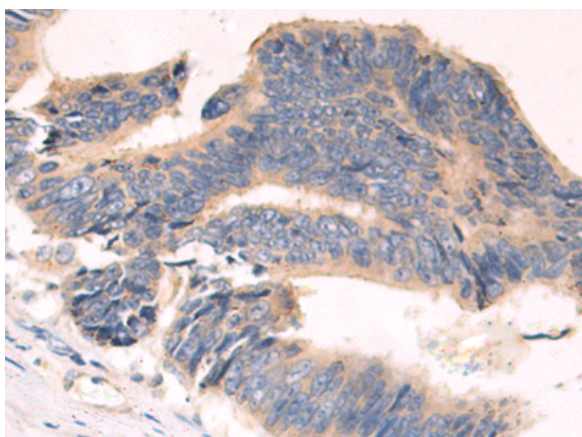
Storage & Shipping: Store at -20°C. Avoid repeated freezing and thawing



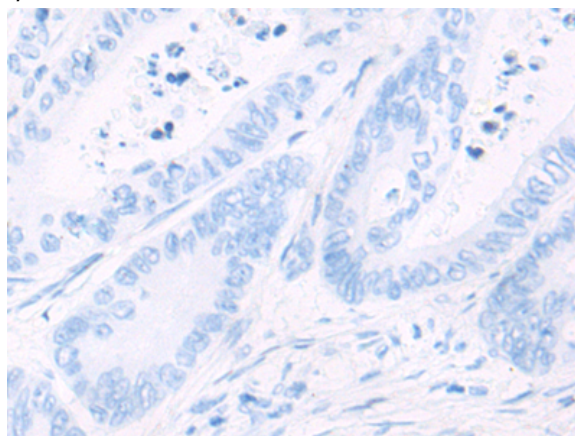
Immunohistochemistry analysis of paraffin embedded Human liver cancer tissue using 220789(PDCD6IP Antibody) at a dilution of 1/50(Cytoplasm).



In comparison with the IHC on the left, the same paraffin-embedded Human liver cancer tissue is first treated with the synthetic peptide and then with 220789(Anti-PDCD6IP Antibody) at dilution 1/50.



The image on the left is immunohistochemistry of paraffin-embedded Human colorectal cancer tissue using 220789(Anti-PDCD6IP Antibody) at a dilution of 1/50.



In comparison with the IHC on the left, the same paraffin-embedded Human colorectal cancer tissue is first treated with synthetic peptide and then with 220789(Anti-PDCD6IP Antibody) at dilution 1/50.

kDa

250—

130—

95—

72—

55—

36—



Gel: 6%SDS-PAGE, Lysate: 40 µg;

Lane: MCF7 cell lysate;

Primary antibody: 220789(PDCD6IP Antibody) at dilution 1/400;

Secondary antibody: HRP-conjugated Goat anti rabbit IgG at 1/5000 dilution;

Exposure time: 30 seconds



Product Description

Pioneering GTPase and Oncogene Product Development since 2010
