

PDCD6 RABBIT PAB

Cat.#: S216716

Product Name: Anti-PDCD6 Rabbit Polyclonal Antibody

Synonyms: ALG2; ALG-2; PEFIB

UNIPROT ID: O75340 (Gene Accession - BC012384)

Background: This gene encodes a calcium-binding protein belonging to the penta-EF-hand protein family. Calcium binding is important for homodimerization and for conformational changes required for binding to other protein partners. This gene product participates in T cell receptor-, Fas-, and glucocorticoid-induced programmed cell death. In mice deficient for this gene product, however, apoptosis was not blocked suggesting this gene product is functionally redundant. Alternatively spliced transcript variants encoding multiple isoforms have been observed for this gene, and a pseudogene of this gene is also located on the short arm of chromosome 5.

Immunogen: Fusion protein of human PDCD6

Applications: ELISA, WB, IHC

Recommended Dilutions: IHC: 50-200;WB: 1000-5000;ELISA: 5000-10000

Host Species: Rabbit

Clonality: Rabbit Polyclonal

Isotype: Immunogen-specific rabbit IgG

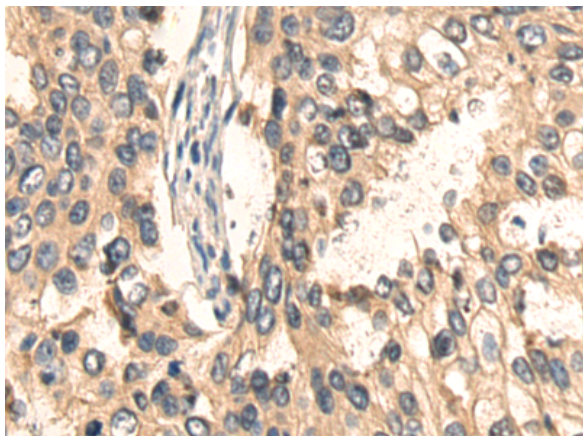
Purification: Antigen affinity purification

Species Reactivity: Human, Mouse, Rat

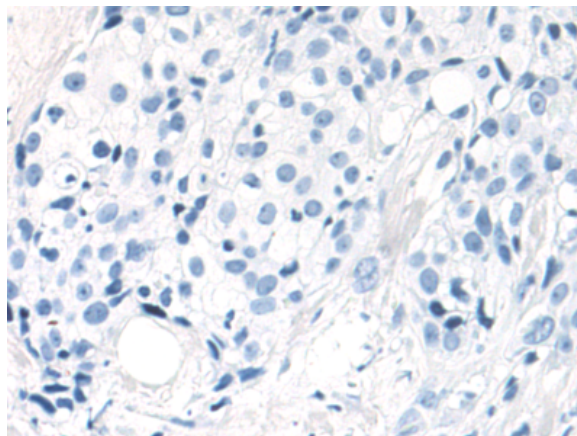
Constituents: PBS (without Mg²⁺ and Ca²⁺), pH 7.4, 150 mM NaCl, 0.05% Sodium Azide and 40% glycerol

Research Areas: Signal Transduction, Cancer

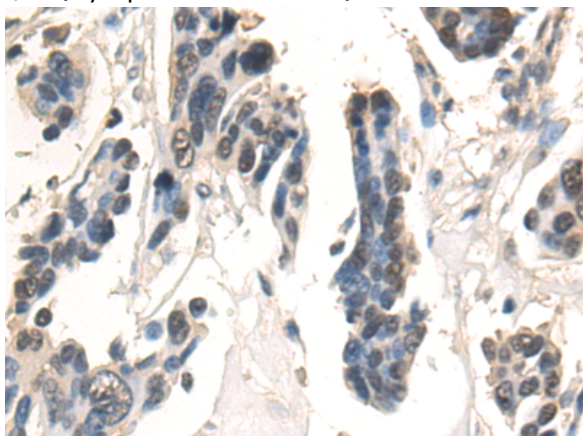
Storage & Shipping: Store at -20°C. Avoid repeated freezing and thawing



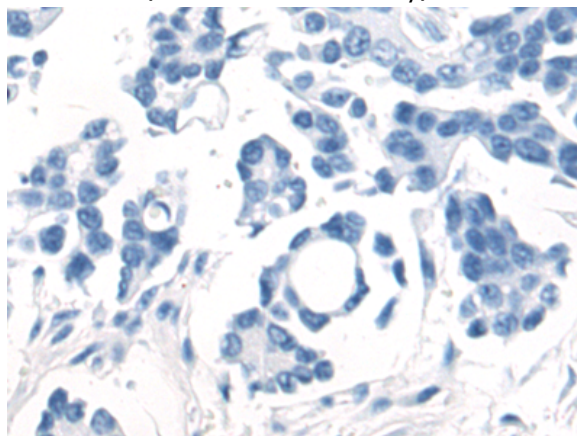
Immunohistochemistry analysis of paraffin embedded Human cervical cancer tissue using 216716(PDCD6 Antibody) at a dilution of 1/80(Cytoplasm or Nucleus).



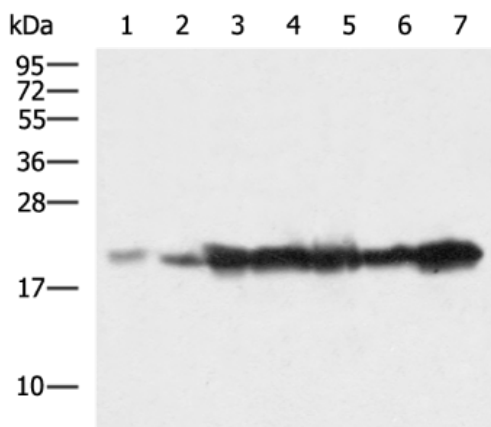
In comparison with the IHC on the left, the same paraffin-embedded Human cervical cancer tissue is first treated with the fusion protein and then with 216716(Anti-PDCD6 Antibody) at dilution 1/80.



The image on the left is immunohistochemistry of paraffin-embedded Human colorectal cancer tissue using 216716(Anti-PDCD6 Antibody) at a dilution of 1/80.



In comparison with the IHC on the left, the same paraffin-embedded Human colorectal cancer tissue is first treated with fusion protein and then with D221113(Anti-PDCD6 Antibody) at dilution 1/80.



Gel: 12%SDS-PAGE, Lysate: 40 μ g;
 Lane 1-7: Mouse fetal liver tissue, Mouse lung tissue, K562, HepG2, 293T, A549, Hela cell lysates;
 Primary antibody: 216716(PDCD6 Antibody) at dilution 1/1350;
 Secondary antibody: HRP-conjugated Goat anti rabbit IgG at 1/5000 dilution;
 Exposure time: 2 seconds



Product Description

Pioneering GTPase and Oncogene Product Development since 2010
