

PDCD1LG2 RABBIT PAB

Cat.#: S217198

Product Name: Anti-PDCD1LG2 Rabbit Polyclonal Antibody

Synonyms: B7DC; Btdc; PDL2; CD273; PD-L2; PDCD1L2; bA574F11.2

UNIPROT ID: Q9BQ51 (Gene Accession - BC113678)

Background: Programmed cell death 1 ligand 2 (also known as PD-L2, B7-DC) is a protein that in humans is encoded by the PDCD1LG2 gene. PDCD1LG2 has also been designated as CD273 (cluster of differentiation 273). Involved in the costimulatory signal, essential for T-cell proliferation and IFNG production in a PDCD1-independent manner. Interaction with PDCD1 inhibits T-cell proliferation by blocking cell cycle progression and cytokine production.

Immunogen: Fusion protein of human PDCD1LG2

Applications: ELISA, IHC

Recommended Dilutions: IHC: 50-200; ELISA: 1000-5000

Host Species: Rabbit

Clonality: Rabbit Polyclonal

Isotype: Immunogen-specific rabbit IgG

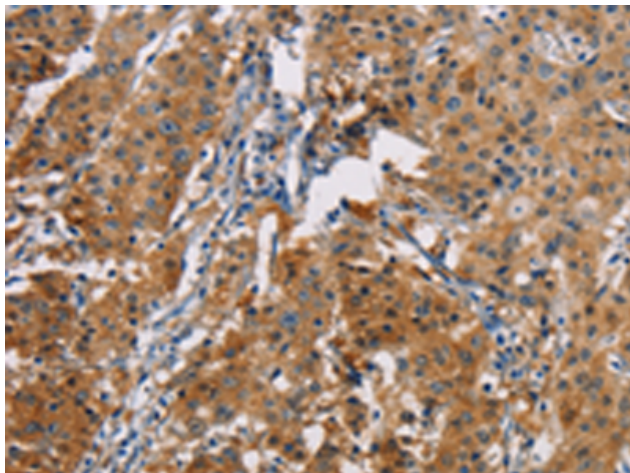
Purification: Antigen affinity purification

Species Reactivity: Human

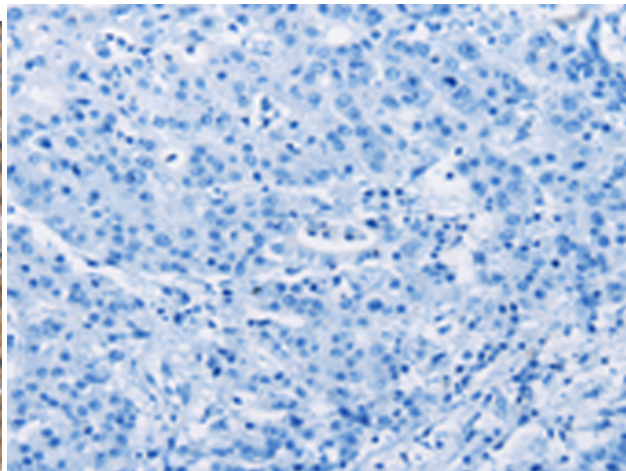
Constituents: PBS (without Mg²⁺ and Ca²⁺), pH 7.4, 150 mM NaCl, 0.05% Sodium Azide and 40% glycerol

Research Areas: Immunology

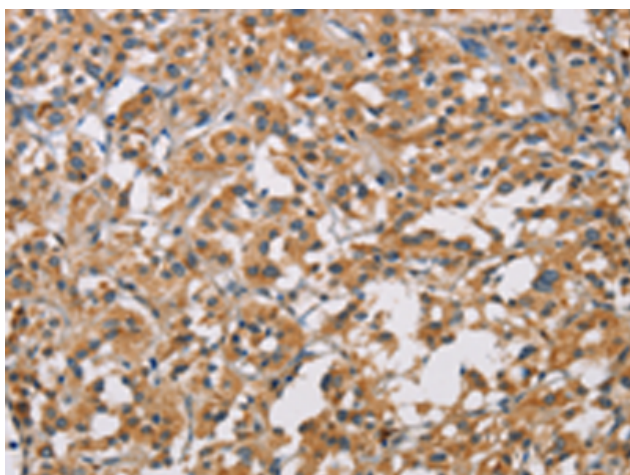
Storage & Shipping: Store at -20°C. Avoid repeated freezing and thawing



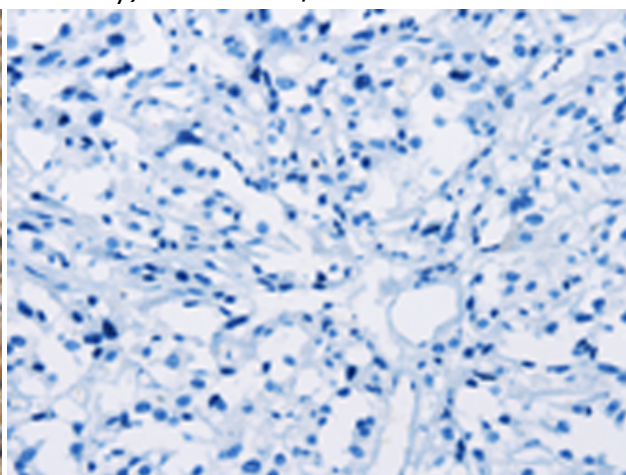
Immunohistochemistry analysis of paraffin embedded Human gastric cancer tissue using 217198 (PDCD1LG2 Antibody) at a dilution of 1/50 (Cytoplasm).



In comparison with the IHC on the left, the same paraffin-embedded Human gastric cancer tissue is first treated with the fusion protein and then with 217198 (Anti-PDCD1LG2 Antibody) at dilution 1/50.



The image on the left is immunohistochemistry of paraffin-embedded Human thyroid cancer tissue using 217198 (Anti-PDCD1LG2 Antibody) at a dilution of 1/50.



In comparison with the IHC on the left, the same paraffin-embedded Human thyroid cancer tissue is first treated with fusion protein and then with D221968 (Anti-PDCD1LG2 Antibody) at dilution 1/50.