

## PCYT2 RABBIT PAB

**Cat.#:** S219100

**Product Name:** Anti-PCYT2 Rabbit Polyclonal Antibody

**Synonyms:** ET

**UNIPROT ID:** Q99447 (Gene Accession - BC000351)

**Background:** This gene encodes an enzyme that catalyzes the formation of CDP-ethanolamine from CTP and phosphoethanolamine in the Kennedy pathway of phospholipid synthesis. Alternative splicing results in multiple transcript variants.

**Immunogen:** Fusion protein of human PCYT2

**Applications:** ELISA, WB, IHC

**Recommended Dilutions:** IHC: 40-200;WB: 1000-5000;ELISA: 5000-10000

**Host Species:** Rabbit

**Clonality:** Rabbit Polyclonal

**Isotype:** Immunogen-specific rabbit IgG

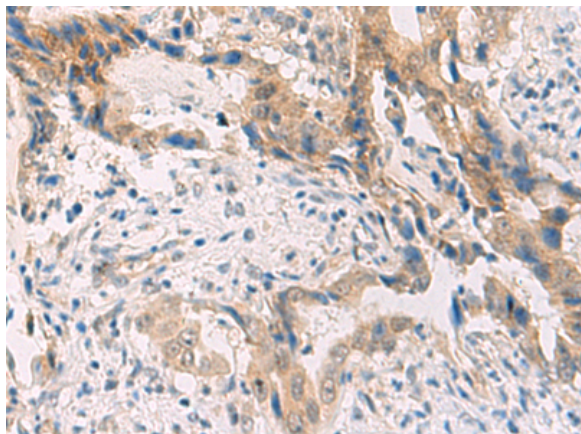
**Purification:** Antigen affinity purification

**Species Reactivity:** Human, Mouse, Rat

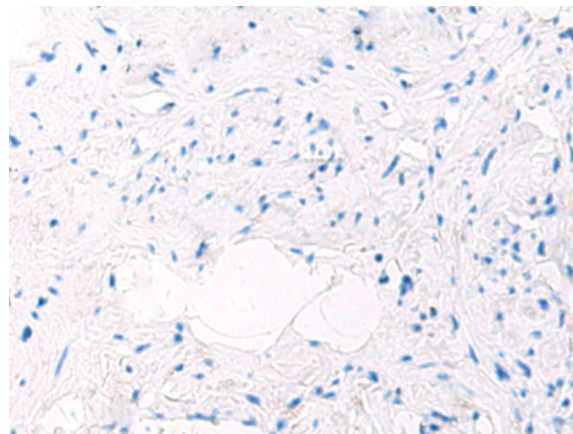
**Constituents:** PBS (without Mg<sup>2+</sup> and Ca<sup>2+</sup>), pH 7.4, 150 mM NaCl, 0.05% Sodium Azide and 40% glycerol

**Research Areas:** Signal Transduction, Metabolism, Neuroscience, Cardiovascular, Immunology

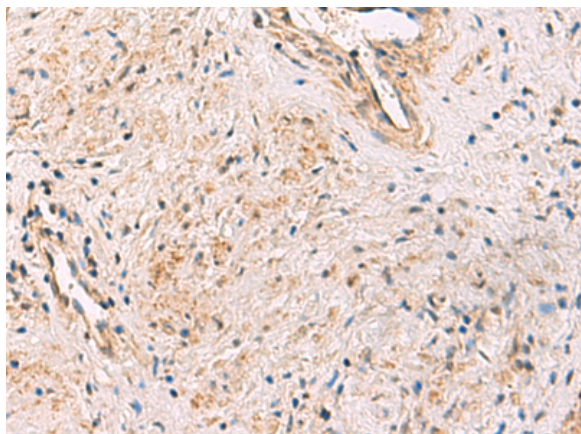
**Storage & Shipping:** Store at -20°C. Avoid repeated freezing and thawing



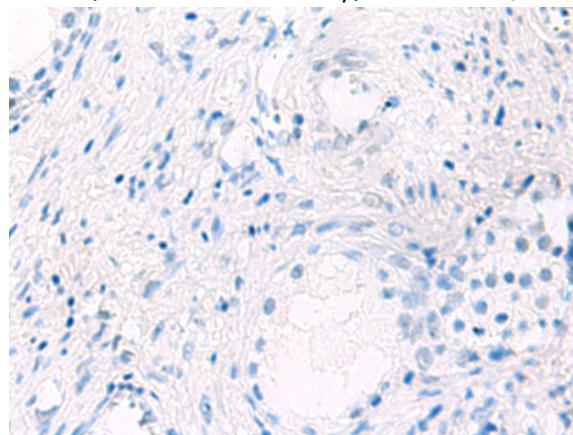
Immunohistochemistry analysis of paraffin embedded Human cervical cancer tissue using 219100(PCYT2 Antibody) at a dilution of 1/55(Cytoplasm).



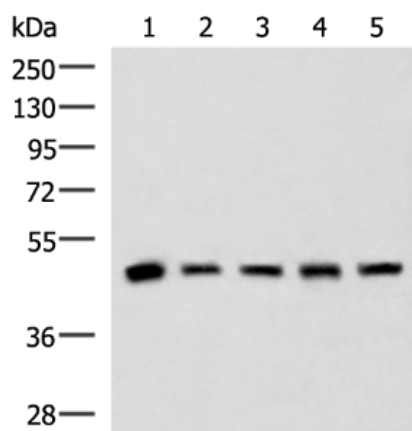
In comparison with the IHC on the left, the same paraffin-embedded Human cervical cancer tissue is first treated with the fusion protein and then with 219100(Anti-PCYT2 Antibody) at dilution 1/55.



The image on the left is immunohistochemistry of paraffin-embedded Human prostate cancer tissue using 219100(Anti-PCYT2 Antibody) at a dilution of 1/55.



In comparison with the IHC on the left, the same paraffin-embedded Human prostate cancer tissue is first treated with fusion protein and then with D225832(Anti-PCYT2 Antibody) at dilution 1/55.



Gel: 8%SDS-PAGE, Lysate: 40 µg;  
 Lane 1-5: Human fetal liver tissue, HepG2, A172, Hela and Jurkat cell lysates;  
 Primary antibody: 219100(PCYT2 Antibody) at dilution 1/800;  
 Secondary antibody: HRP-conjugated Goat anti rabbit IgG at 1/5000 dilution;  
 Exposure time: 5 seconds



# Product Description

Pioneering GTPase and Oncogene Product Development since 2010

---