

PCTP RABBIT PAB

Cat.#: S218839

Product Name: Anti-PCTP Rabbit Polyclonal Antibody

Synonyms: PC-TP; STARD2

UNIPROT ID: Q9UKL6 (Gene Accession - BC012084)

Background: Catalyzes the transfer of phosphatidylcholine between membranes. Binds a single lipid molecule.

Immunogen: Fusion protein of human PCTP

Applications: ELISA, WB, IHC

Recommended Dilutions: IHC: 50-300;WB: 200-1000;ELISA: 5000-10000

Host Species: Rabbit

Clonality: Rabbit Polyclonal

Isotype: Immunogen-specific rabbit IgG

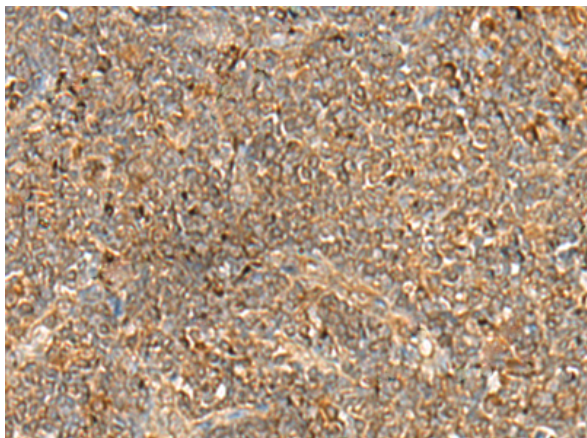
Purification: Antigen affinity purification

Species Reactivity: Human, Mouse

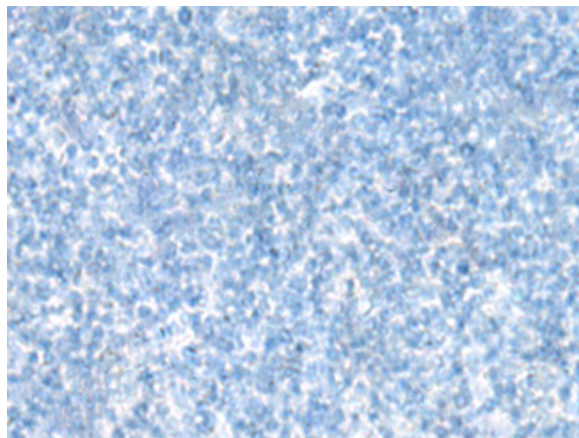
Constituents: PBS (without Mg²⁺ and Ca²⁺), pH 7.4, 150 mM NaCl, 0.05% Sodium Azide and 40% glycerol

Research Areas: Metabolism, Cardiovascular

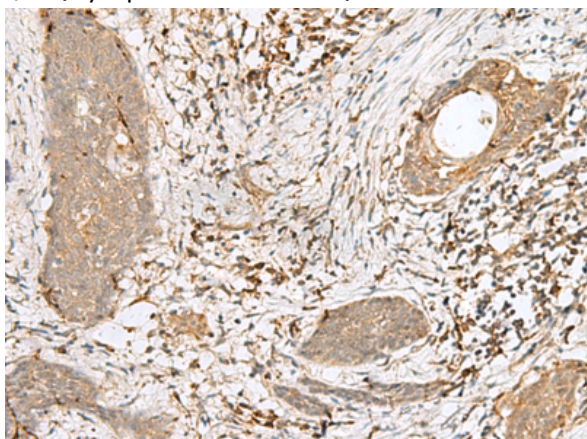
Storage & Shipping: Store at -20°C. Avoid repeated freezing and thawing



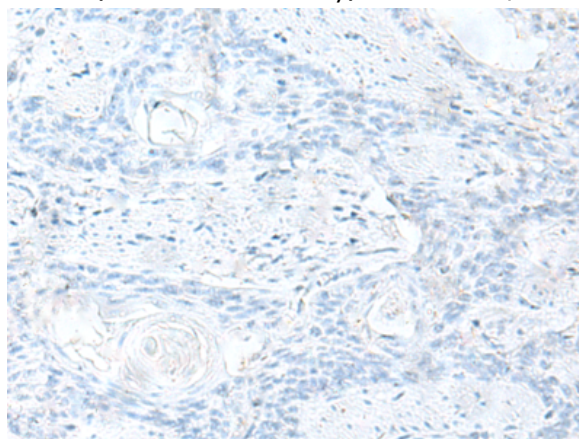
Immunohistochemistry analysis of paraffin embedded Human tonsil tissue using 218839(PCTP Antibody) at a dilution of 1/25(Cytoplasm or Nucleus).



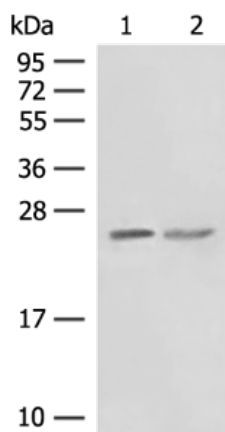
In comparison with the IHC on the left, the same paraffin-embedded Human tonsil tissue is first treated with the fusion protein and then with 218839(Anti-PCTP Antibody) at dilution 1/25.



The image on the left is immunohistochemistry of paraffin-embedded Human esophagus cancer tissue using 218839(Anti-PCTP Antibody) at a dilution of 1/25.



In comparison with the IHC on the left, the same paraffin-embedded Human esophagus cancer tissue is first treated with fusion protein and then with D225323(Anti-PCTP Antibody) at dilution 1/25.



Gel: 12%SDS-PAGE, Lysate: 40 µg;
 Lane 1-2: HepG2 cell, Human fetal liver tissue lysates;
 Primary antibody: 218839(PCTP Antibody) at dilution 1/250;
 Secondary antibody: Goat anti rabbit IgG at 1/8000 dilution;
 Exposure time: 1 minute



Product Description

Pioneering GTPase and Oncogene Product Development since 2010
