

PCNA RABBIT PAB

Cat.#: S216220

Product Name: Anti-PCNA Rabbit Polyclonal Antibody

Synonyms: ATLD2

UNIPROT ID: P12004 (Gene Accession - BC000491)

Background: The protein encoded by this gene is found in the nucleus and is a cofactor of DNA polymerase delta. The encoded protein acts as a homotrimer and helps increase the processivity of leading strand synthesis during DNA replication. In response to DNA damage, this protein is ubiquitinated and is involved in the RAD6-dependent DNA repair pathway. Two transcript variants encoding the same protein have been found for this gene. Pseudogenes of this gene have been described on chromosome 4 and on the X chromosome.

Immunogen: Fusion protein of human PCNA

Applications: ELISA, WB, IHC

Recommended Dilutions: IHC: 25-100;WB: 500-2000;ELISA: 5000-10000

Host Species: Rabbit

Clonality: Rabbit Polyclonal

Isotype: Immunogen-specific rabbit IgG

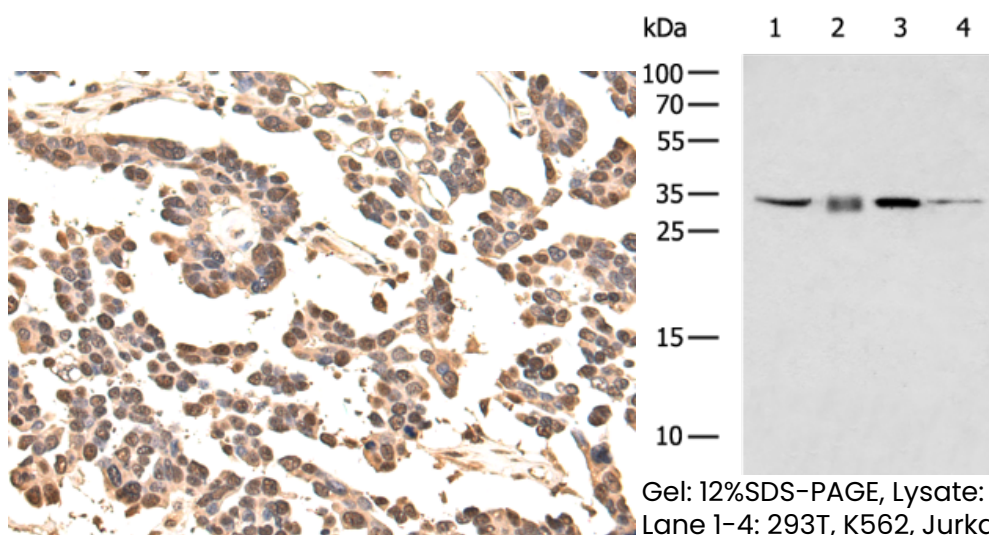
Purification: Antigen affinity purification

Species Reactivity: Human, Mouse, Rat

Constituents: PBS (without Mg²⁺ and Ca²⁺), pH 7.4, 150 mM NaCl, 0.05% Sodium Azide and 40% glycerol

Research Areas: Epigenetics and Nuclear Signaling, Cancer

Storage & Shipping: Store at -20°C. Avoid repeated freezing and thawing



Immunohistochemistry analysis of paraffin-embedded Human colorectal cancer tissue using 216220(PCNA Antibody) at a dilution of 1/35(Nucleus).

Gel: 12%SDS-PAGE, Lysate: 40 µg;
Lane 1-4: 293T, K562, Jurkat, RAW264.7 cell lysates;
Primary antibody: 216220(PCNA Antibody) at dilution 1/400;
Secondary antibody: HRP-conjugated Goat anti rabbit IgG at 1/5000 dilution;
Exposure time: 3 seconds



Product Description

Pioneering GTPase and Oncogene Product Development since 2010
