

PCMT1 RABBIT PAB

Cat.#: S217674

Product Name: Anti-PCMT1 Rabbit Polyclonal Antibody

Synonyms: PIMT

UNIPROT ID: P22061 (Gene Accession - BC007501)

Background: This gene encodes a member of the type II class of protein carboxyl methyltransferase enzymes. The encoded enzyme plays a role in protein repair by recognizing and converting D-aspartyl and L-isoaspartyl residues resulting from spontaneous deamidation back to the normal L-aspartyl form. The encoded protein may play a protective role in the pathogenesis of Alzheimer's disease, and single nucleotide polymorphisms in this gene have been associated with spina bifida and premature ovarian failure. Alternatively spliced transcript variants encoding multiple isoforms have been observed for this gene. [provided by RefSeq, Oct 2011]

Immunogen: Fusion protein of human PCMT1

Applications: ELISA, WB, IHC

Recommended Dilutions: IHC: 200-300;WB: 1000-5000;ELISA: 5000-10000

Host Species: Rabbit

Clonality: Rabbit Polyclonal

Isotype: Immunogen-specific rabbit IgG

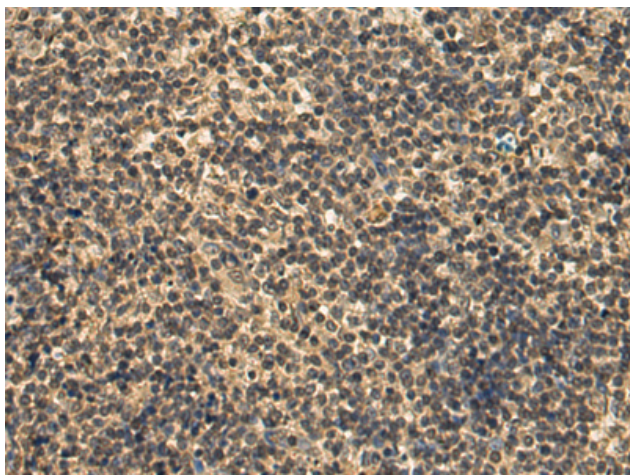
Purification: Antigen affinity purification

Species Reactivity: Human, Mouse, Rat

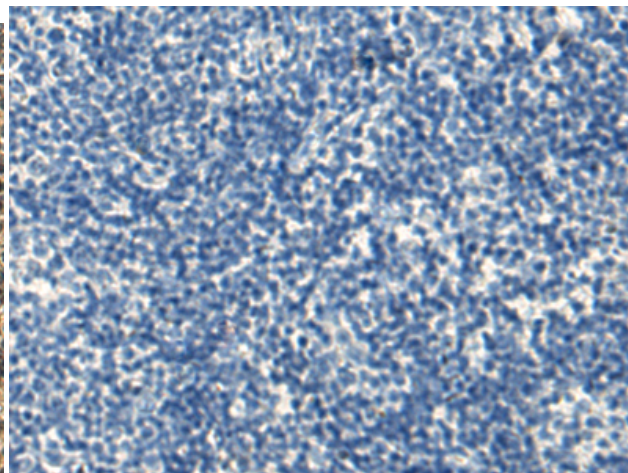
Constituents: PBS (without Mg²⁺ and Ca²⁺), pH 7.4, 150 mM NaCl, 0.05% Sodium Azide and 40% glycerol

Research Areas: Cell Biology

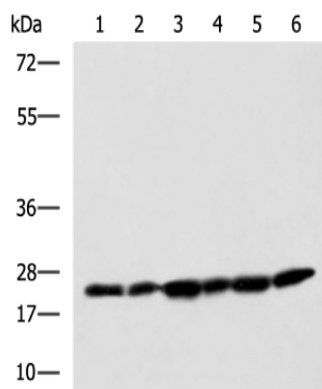
Storage & Shipping: Store at -20°C. Avoid repeated freezing and thawing



Immunohistochemistry analysis of paraffin embedded Human esophagus cancer tissue using 217674(PCMT1 Antibody) at a dilution of 1/160(Cytoplasm).



In comparison with the IHC on the left, the same paraffin-embedded Human esophagus cancer tissue is first treated with the fusion protein and then with 217674(Anti-PCMT1 Antibody) at dilution 1/160.



Gel: 8%SDS-PAGE, Lysate: 40 μ g;
 Lane 1-6: Jurkat, Raji, 231, HepG2, Hela and 293T cell lysates;
 Primary antibody: 217674(PCMT1 Antibody) at dilution 1/1000;
 Secondary antibody: HRP-conjugated Goat anti rabbit IgG at 1/5000 dilution;
 Exposure time: 1 minute