

PCLAF RABBIT PAB

Cat.#: S222300

Product Name: Anti-PCLAF Rabbit Polyclonal Antibody

Synonyms: L5; PAF; OEATC; PAF15; OEATC1; p15PAF; NS5ATP9; OEATC-1; p15/PAF; KIAA0101; p15(PAF)

UNIPROT ID: Q15004 (Gene Accession - NP_055551)

Background: PCNA-binding protein that acts as a regulator of DNA repair during DNA replication. Following DNA damage, the interaction with PCNA is disrupted, facilitating the interaction between monoubiquitinated PCNA and the translesion DNA synthesis DNA polymerase eta (POLH) at stalled replisomes, facilitating the bypass of replication-fork-blocking lesions. Also acts as a regulator of centrosome number.

Immunogen: Synthetic peptide of human PCLAF

Applications: ELISA, IHC

Recommended Dilutions: IHC: 50-200; ELISA: 5000-10000

Host Species: Rabbit

Clonality: Rabbit Polyclonal

Isotype: Immunogen-specific rabbit IgG

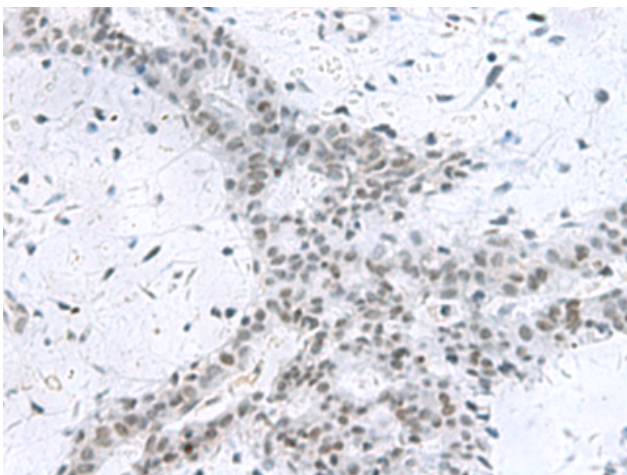
Purification: Antigen affinity purification

Species Reactivity: Human, Mouse, Rat

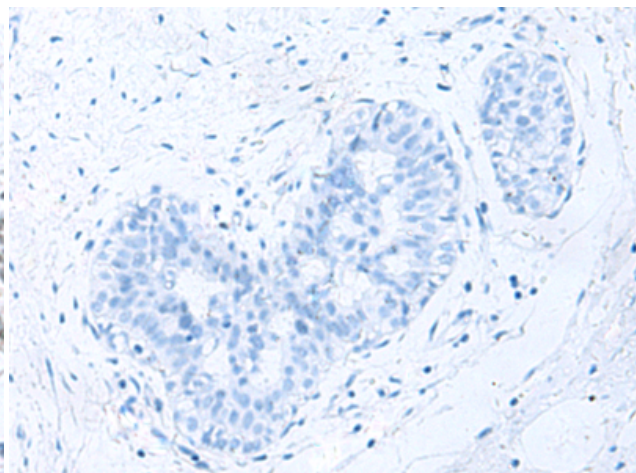
Constituents: PBS (without Mg²⁺ and Ca²⁺), pH 7.4, 150 mM NaCl, 0.05% Sodium Azide and 40% glycerol

Research Areas: Cancer, Metabolism

Storage & Shipping: Store at -20°C. Avoid repeated freezing and thawing



Immunohistochemistry analysis of paraffin embedded Human breast cancer tissue using 222300 (PCLAF Antibody) at a dilution of 1/80 (Nucleus).



In comparison with the IHC on the left, the same paraffin-embedded Human breast cancer tissue is first treated with the synthetic peptide and then with 222300 (Anti-PCLAF Antibody) at dilution 1/80.