

## PCK2 RABBIT PAB

**Cat.#:** N225907

**Product Name:** Anti-PCK2 Rabbit pAb

**Synonyms:** PCK2; PEPCK2; Phosphoenolpyruvate carboxykinase [GTP]; mitochondrial; PEPCK-M; Phosphoenolpyruvate carboxylase

**UNIPROT ID:** Q16822

**Background:** Catalyzes the conversion of oxaloacetate (OAA) to phosphoenolpyruvate (PEP), the rate-limiting step in the metabolic pathway that produces glucose from lactate and other precursors derived from the citric acid cycle.

**Immunogen:** A synthesized peptide derived from human PCK2

**Applications:** WB,IHC-P,ICC/IF,FC

**Recommended Dilutions:** WB: 1/500-1/1000 IHC: 1/50-1/100 IF: 1/50-1/200 FC: 1/50-1/100

**Host Species:** Rabbit

**Clonality:** Rabbit Polyclonal

**Clone ID:** -

**MW:** Calculated MW: 71 kDa; Observed MW: 71 kDa

**Isotype:** IgG

**Purification:** Affinity Chromatography

**Species Reactivity:** Human,Mouse,Rat

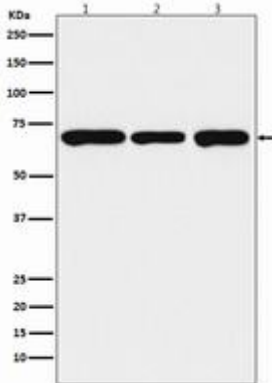
**Conjugation:** Unconjugated

**Modification:** Unmodified

**Constituents:** PBS (without Mg<sup>2+</sup> and Ca<sup>2+</sup>), pH 7.3 containing 50% glycerol, 0.5% BSA and 0.02% sodium azide

**Research Areas:** Cardiovascular

**Storage & Shipping:** Store at -20°C. Avoid repeated freezing and thawing



Western blot analysis of PCK2 in (1) HepG2 lysates; (2) mouse brain lysates; (3) rat spleen lysates using PCK2 antibody.