

## PCID2 RABBIT PAB

**Cat.#:** S218064

**Product Name:** Anti-PCID2 Rabbit Polyclonal Antibody

**Synonyms:** F10

**UNIPROT ID:** Q5JVF3 (Gene Accession - BC016614 )

**Background:** This gene encodes a component of the TREX-2 complex (transcription and export complex 2), which regulates mRNA export from the nucleus. This protein regulates expression of Mad2 mitotic arrest deficient-like 1, a cell division checkpoint protein. This protein also interacts with and stabilizes Brca2 (breast cancer 2) protein. Alternative splicing results in multiple transcript variants.

**Immunogen:** Fusion protein of human PCID2

**Applications:** ELISA, WB, IHC

**Recommended Dilutions:** IHC: 50-200;WB: 1000-5000;ELISA: 5000-10000

**Host Species:** Rabbit

**Clonality:** Rabbit Polyclonal

**Isotype:** Immunogen-specific rabbit IgG

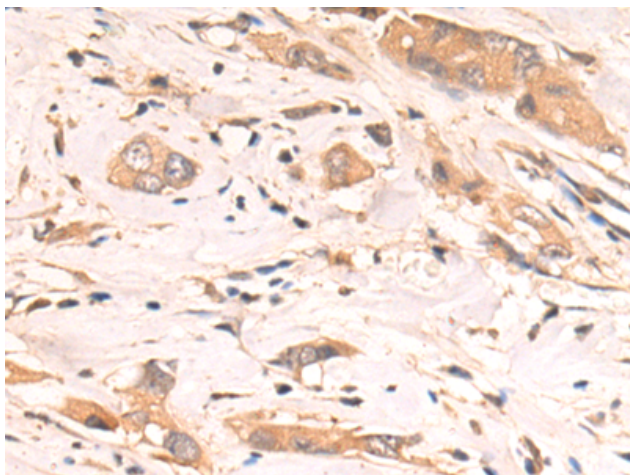
**Purification:** Antigen affinity purification

**Species Reactivity:** Human, Mouse

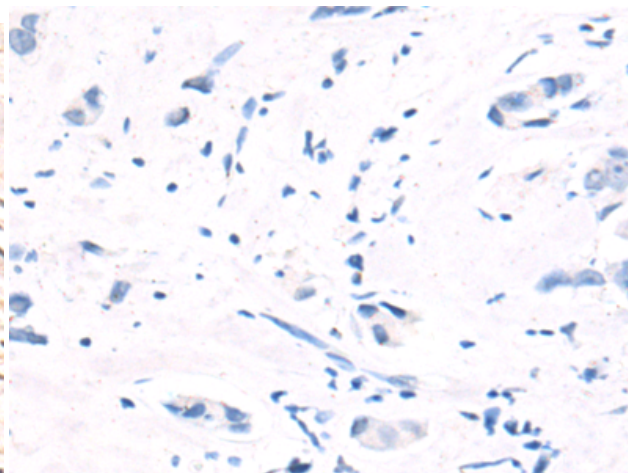
**Constituents:** PBS (without Mg<sup>2+</sup> and Ca<sup>2+</sup>), pH 7.4, 150 mM NaCl, 0.05% Sodium Azide and 40% glycerol

**Research Areas:** Cell Biology

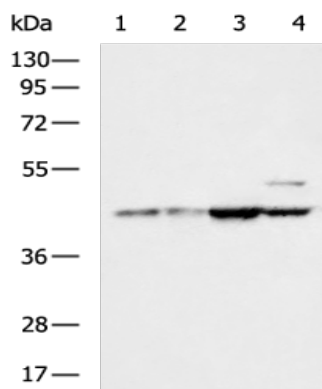
**Storage & Shipping:** Store at -20°C. Avoid repeated freezing and thawing



Immunohistochemistry analysis of paraffin embedded Human breast cancer tissue using 218064(PCID2 Antibody) at a dilution of 1/80(Cytoplasm).



In comparison with the IHC on the left, the same paraffin-embedded Human breast cancer tissue is first treated with the fusion protein and then with 218064(Anti-PCID2 Antibody) at dilution 1/80.



Gel: 8%SDS-PAGE, Lysate: 40 µg;  
 Lane 1-4: HUVEC, CaCO<sub>2</sub>, 293T, LOVO cell lysates;  
 Primary antibody: 218064(PCID2 Antibody) at dilution 1/1200;  
 Secondary antibody: HRP-conjugated Goat anti rabbit IgG at 1/5000 dilution;  
 Exposure time: 15 seconds